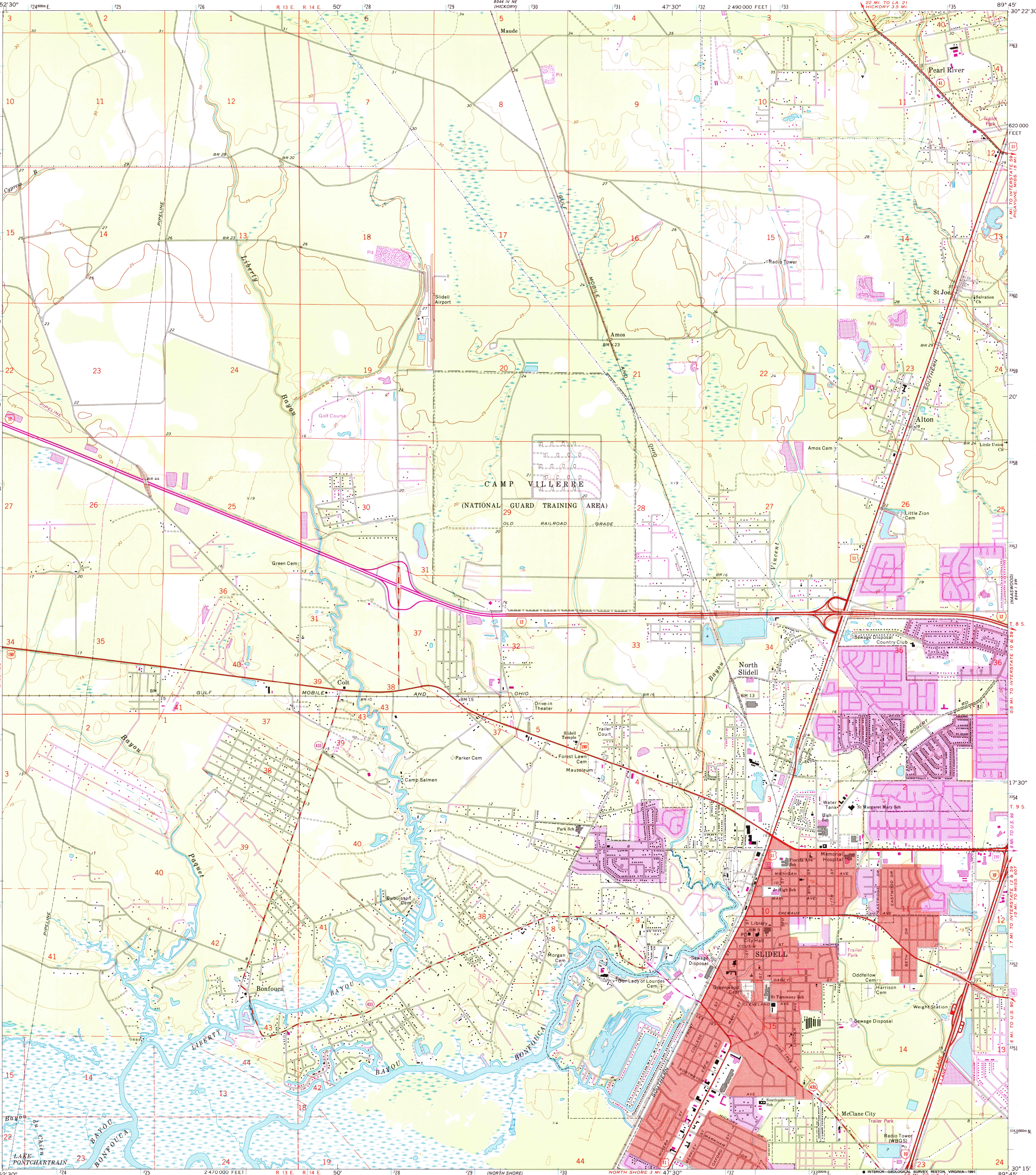


UNITED STATES
DEPARTMENT OF THE INTERIOR
GEOLOGICAL SURVEY

SLIDELL QUADRANGLE
LOUISIANA—ST. TAMMANY PARISH
7.5 MINUTE SERIES (TOPOGRAPHIC)



Mapped, edited, and published by the Geological Survey

Control by USGS and USC&GS

Topography by photogrammetric methods from aerial photographs taken 1969. Field checked 1971

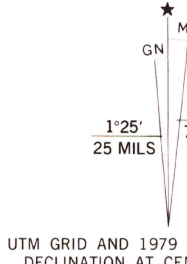
Polyconic projection. 1927 North American datum 10,000-foot grid based on Louisiana coordinate system, south zone 1000-meter Universal Transverse Mercator grid ticks, zone 16, shown in blue

To place on the predicted North American Datum 1983 move the projection lines 18 meters south and 7 meters east as shown by dashed corner ticks

Red tint indicates areas in which only landmark buildings are shown

There may be private inholdings within the boundaries of the National or State reservations shown on this map

Fine red dashed lines indicate selected fence and field lines where generally visible on aerial photographs. This information is unchecked



SCALE 1:24 000
1 000 0 1000 2000 3000 4000 5000 6000 7000 FEET
1 5 10 15 20 25 KILOMETER

CONTOUR INTERVAL 5 FEET

NATIONAL GEODETIC VERTICAL DATUM OF 1929

DEPTH CURVES AND SOUNDINGS IN FEET

GULF COAST LOW WATER DATUM

THE RELATIONSHIP BETWEEN THE TWO DATUMS IS VARIABLE

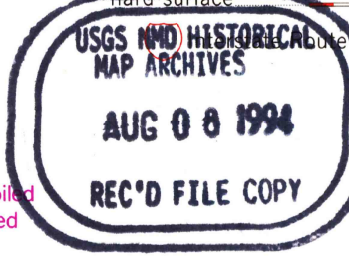
SHORELINE SHOWN REPRESENTS THE APPROXIMATE LINE OF MEAN HIGH WATER

THE MEAN RANGE OF TIDE IS APPROXIMATELY 1/4 FOOT

THIS MAP COMPLIES WITH NATIONAL MAP ACCURACY STANDARDS

FOR SALE BY U. S. GEOLOGICAL SURVEY, DENVER, COLORADO 80225, OR RESTON, VIRGINIA 22092
AND LOUISIANA DEPARTMENT OF PUBLIC WORKS, BATON ROUGE, LOUISIANA 70804

A FOLDER DESCRIBING TOPOGRAPHIC MAPS AND SYMBOLS IS AVAILABLE ON REQUEST



ROAD CLASSIFICATION

Primary highway, hard surface

Secondary highway, hard surface

Unimproved road

U. S. Route

State Route

SLIDELL, LA.

30089-C7-TF-024

1971

PHOTOREVISED 1979

DMA 8044 IV SE—SERIES V885