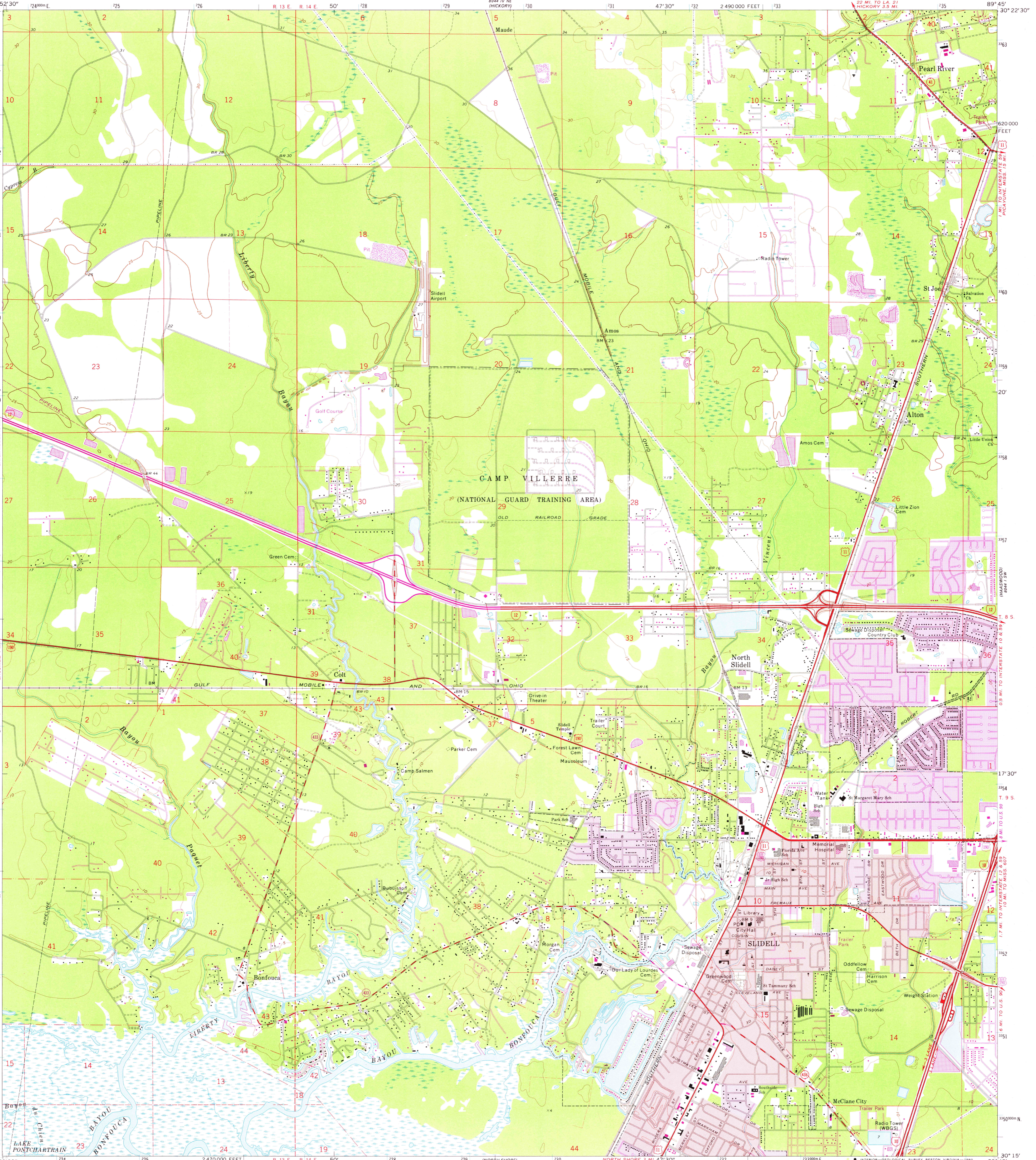


UNITED STATES
DEPARTMENT OF THE INTERIOR
GEOLOGICAL SURVEY

SLIDELL QUADRANGLE
LOUISIANA—ST. TAMMANY PARISH
7.5 MINUTE SERIES (TOPOGRAPHIC)



Mapped, edited, and published by the Geological Survey
Control by USGS and USC&GS

Topography by photogrammetric methods from aerial
photographs taken 1969. Field checked 1971

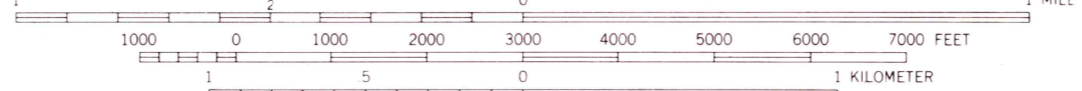
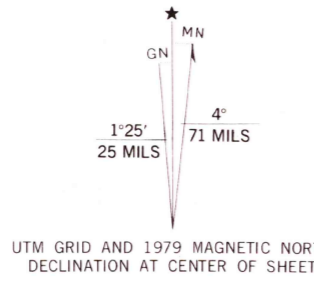
Polyconic projection. 1927 North American datum
10,000-foot grid based on Louisiana coordinate system, south zone
1000-meter Universal Transverse Mercator grid ticks,
zone 16, shown in blue

To place on the predicted North American Datum 1983
move the projection lines 18 meters south and
7 meters east as shown by dashed corner ticks

Red tint indicates areas in which only landmark buildings are shown

There may be private inholdings within the boundaries of the
National or State reservations shown on this map

Fine red dashed lines indicate selected fence and field lines where
generally visible on aerial photographs. This information is unchecked



CONTOUR INTERVAL 5 FEET
NATIONAL GEODETIC VERTICAL DATUM OF 1929
DEPTH CURVES AND SOUNDINGS IN FEET
GULF COAST LOW WATER DATUM
THE RELATIONSHIP BETWEEN THE TWO DATUMS IS VARIABLE
SHORELINE SHOWN REPRESENTS THE APPROXIMATE LINE OF MEAN HIGH WATER
THE MEAN RANGE OF TIDE IS APPROXIMATELY 16 FEET
THIS MAP COMPLIES WITH NATIONAL MAP ACCURACY STANDARDS
FOR SALE BY U. S. GEOLOGICAL SURVEY, DENVER, COLORADO 80225, OR RESTON, VIRGINIA 22092
AND STATE OF LOUISIANA, DEPARTMENT OF PUBLIC WORKS, BATON ROUGE, LOUISIANA 70804
A FOLDER DESCRIBING TOPOGRAPHIC MAPS AND SYMBOLS IS AVAILABLE ON REQUEST



ROAD CLASSIFICATION	
Primary highway, hard surface	Light-duty road, hard or improved surface
Secondary highway, hard surface	Unimproved road
Interstate Route	U. S. Route
	State Route

USGS
Historical File
Topographic Division

SLIDELL, LA.
JUN - 3 1980

N3015-W8945/7.5
1971
PHOTOREVISED 1979
DMA 8044 IV SE—SERIES V885

Revisions shown in purple and woodland compiled
from aerial photographs taken 1978. Map edited
1979. This information not field checked
Purple tint indicates extension of urban area