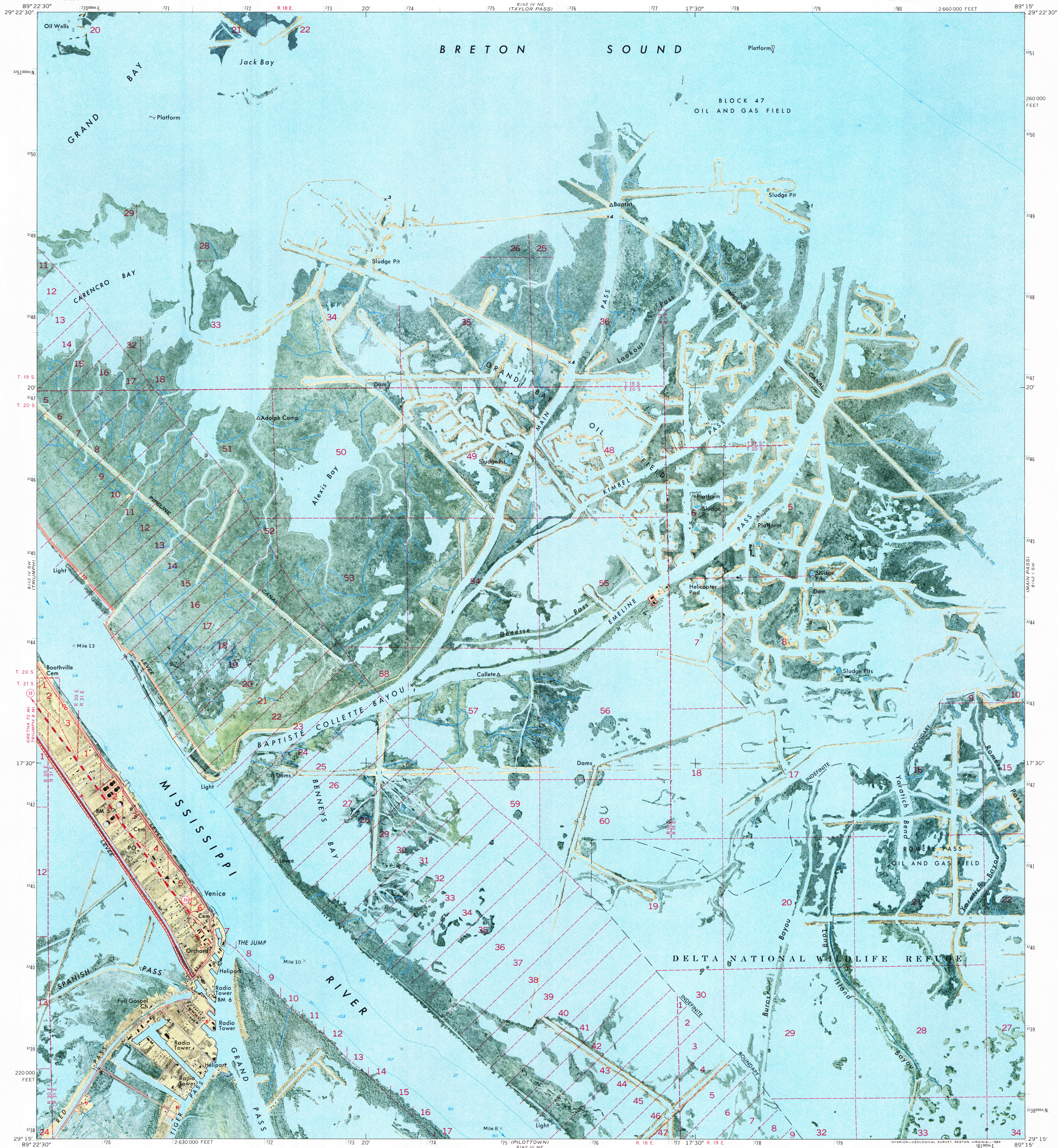


UNITED STATES  
DEPARTMENT OF THE INTERIOR  
GEOLOGICAL SURVEY

VENICE QUADRANGLE  
LOUISIANA—PLAQUEMINES PARISH  
7.5 MINUTE SERIES ORTHOPHOTOMAP (TOPOGRAPHIC)  
SE 1/4 VENICE 15' QUADRANGLE



Mapped, edited, and published by the Geological Survey  
Control by USGS and USC&GS

Orthophotomap prepared from high-altitude aerial photographs  
taken November 21, 1971. Topography by planetable surveys 1971  
Supersedes planimetric map dated 1935

Selected hydrographic data compiled from USC&GS Charts 1270 and 1271 (1970)  
and 1272 (1969). This information is not intended for navigational purposes

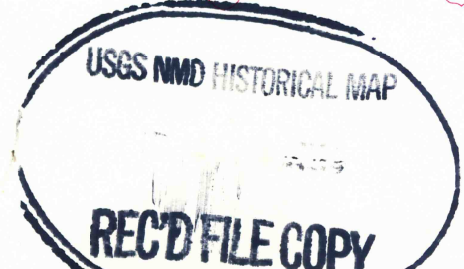
Polyconic projection. 1927 North American datum  
10,000-foot grid based on Louisiana coordinate system,  
south zone  
1000-meter Universal Transverse Mercator grid ticks,  
zone 16, shown in blue  
All or part of this quadrangle lies within a subsidence area

Where omitted, land lines have not been established or  
are not shown because of insufficient data

To place on the predicted North American Datum 1983,  
move the projection lines 20 meters south and  
6 meters east as shown by dashed corner ticks  
There may be private inholdings within the boundaries of  
the National or State reservations shown on this map

SCALE 1:24,000  
CONTOUR INTERVAL 5 FEET  
NATIONAL GEODETIC VERTICAL DATUM OF 1929  
DEPTH CURVES AND SOUNDINGS IN FEET—GULF COAST LOW WATER DATUM  
THE RELATIONSHIP BETWEEN THE TWO DATUMS IS VARIABLE  
THE MEAN RANGE OF TIDE IS APPROXIMATELY 1/2 FOOT  
THIS MAP COMPLIES WITH NATIONAL MAP ACCURACY STANDARDS  
FOR SALE BY U. S. GEOLOGICAL SURVEY, DENVER, COLORADO 80225, OR RESTON, VIRGINIA 22092  
AND LOUISIANA DEPARTMENT OF PUBLIC WORKS, BATON ROUGE, LOUISIANA 70804  
A FOLDER DESCRIBING TOPOGRAPHIC MAPS AND SYMBOLS IS AVAILABLE ON REQUEST

ROAD CLASSIFICATION  
Primary highway, hard surface  
Secondary highway, hard surface  
Unimproved road  
Interstate Route  
U. S. Route  
State Route  
Light-duty road, hard or improved surface  
Unimproved road  
Interstate Route  
U. S. Route  
State Route



VENICE, LA.  
SE 1/4 VENICE 15' QUADRANGLE  
N2915—W8915/7.5

1971

AMS 8142 IV SE—SERIES V8850