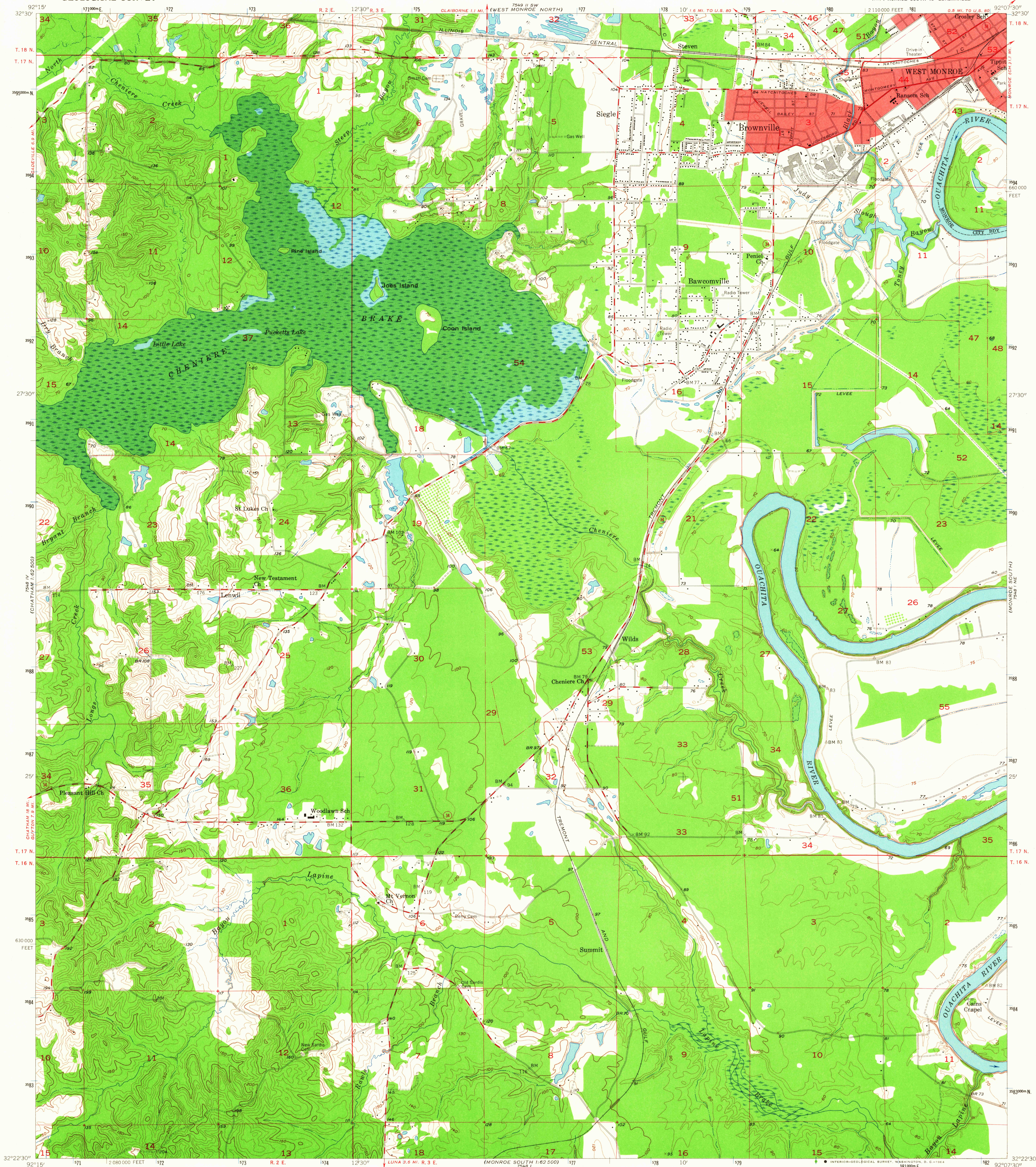


UNITED STATES
DEPARTMENT OF THE INTERIOR
GEOLOGICAL SURVEY

WEST MONROE SOUTH QUADRANGLE
LOUISIANA—OUACHITA PARISH
7.5 MINUTE SERIES (TOPOGRAPHIC)
NW/4 MONROE SOUTH 15' QUADRANGLE



Mapped, edited, and published by the Geological Survey

Control by USGS, USCGS, USCE, and Louisiana Geodetic Survey

Topography from aerial photographs by Kersh plotter

and by planetable surveys 1957. Aerial photographs taken 1956

Polyconic projection. 1927 North American datum

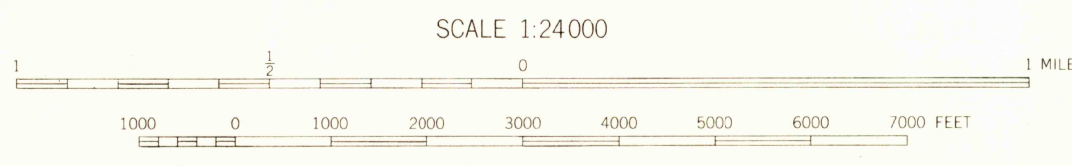
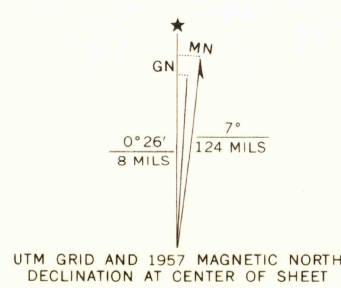
10,000-foot grid based on Louisiana coordinate system, north zone

1000-meter Universal Transverse Mercator grid ticks,

zone 15, shown in blue

Red tint indicates areas in which only

landmark buildings are shown



CONTOUR INTERVAL 10 FEET
DOTTED LINES REPRESENT 5-FOOT CONTOURS
DATUM IS MEAN SEA LEVEL

THIS MAP COMPLIES WITH NATIONAL MAP ACCURACY STANDARDS
FOR SALE BY U. S. GEOLOGICAL SURVEY, DENVER 25, COLORADO OR WASHINGTON 25, D. C.
AND BY THE STATE OF LOUISIANA, DEPARTMENT OF PUBLIC WORKS, BATON ROUGE 4, LOUISIANA
A FOLDER DESCRIBING TOPOGRAPHIC MAPS AND SYMBOLS IS AVAILABLE ON REQUEST

USGS
Historical File
Topographic Division



ROAD CLASSIFICATION
Heavy-duty ——— Light-duty ———
Medium-duty ——— Unimproved dirt ———
State Route ———

WEST MONROE SOUTH, LA.
NW/4 MONROE SOUTH 15' QUADRANGLE
N3222.5—W9207.5/7.5

1957
AMS 7548 1 NW—SERIES V885

USGS
FILE COPY
TOPOGRAPHIC DIVISION

NOV 23 1957

3160