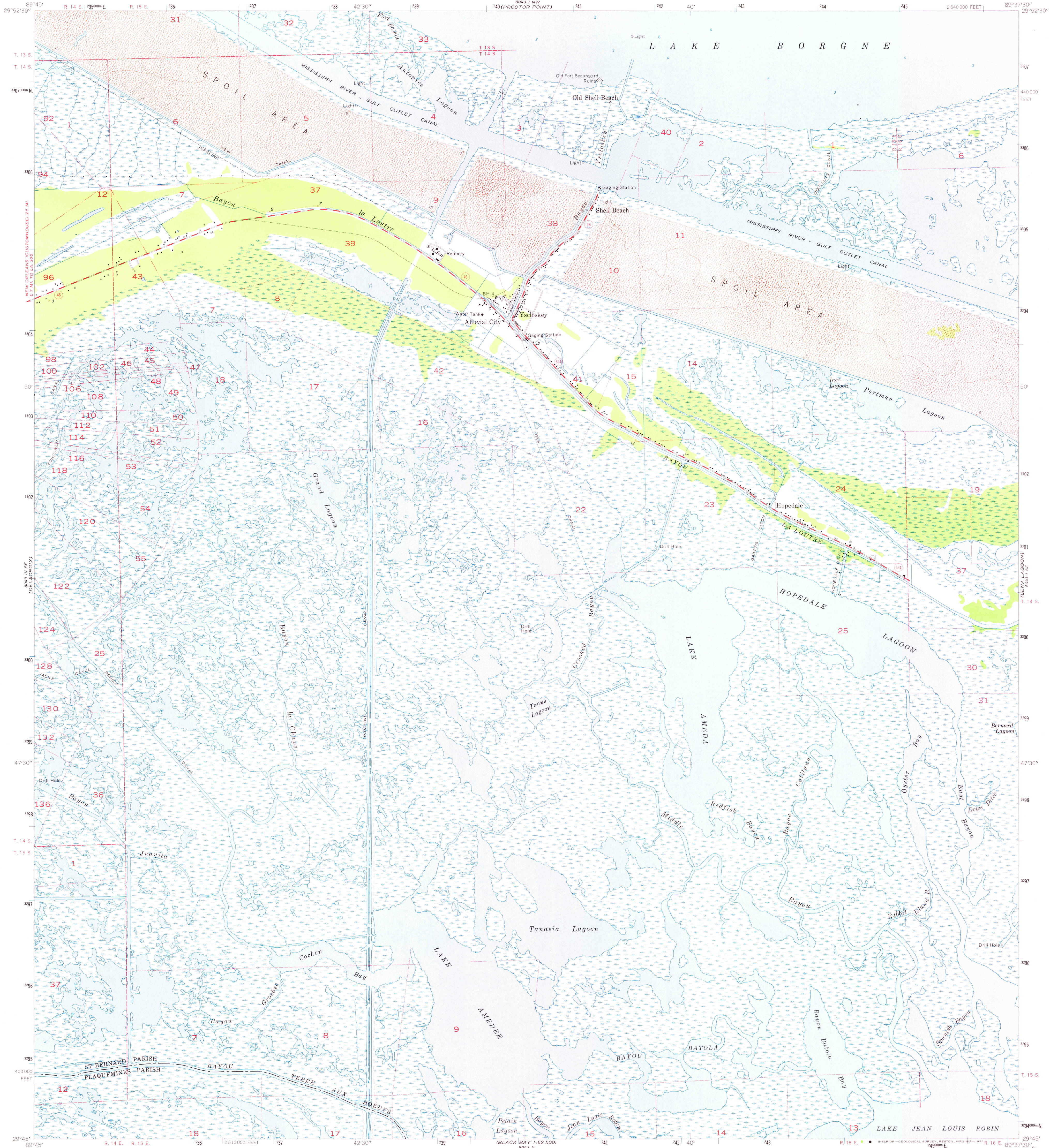


UNITED STATES  
DEPARTMENT OF THE INTERIOR  
GEOLOGICAL SURVEY

YSCLOSKEY QUADRANGLE  
LOUISIANA  
7.5 MINUTE SERIES (TOPOGRAPHIC)  
SW/4 YSCLOSKEY 15' QUADRANGLE



Maped by U.S. Coast and Geodetic Survey  
Edited and published by the Geological Survey

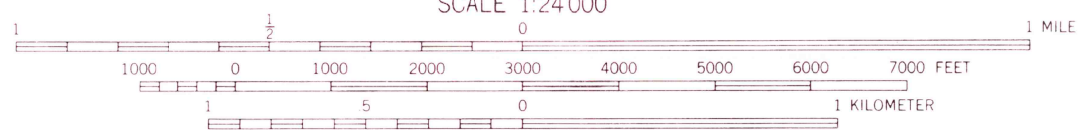
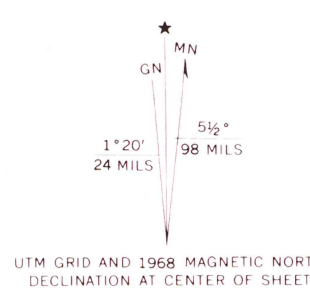
Control by USGS and USC&GS

Planimetry by photogrammetric methods from aerial photographs  
taken 1952. Topography by planetable surveys 1952 and 1957  
Revised by the Geological Survey from 1967 aerial photography  
Field checked 1968

Selected hydrographic data compiled from USC&GS Chart 1271 (1966)  
This information is not intended for navigational purposes

Polyconic projection. 1927 North American datum  
10,000-foot grid based on Louisiana coordinate system, south zone  
1000-meter Universal Transverse Mercator grid ticks,  
zone 16; shown in blue

Where omitted, land lines have not been established  
or are not shown because of insufficient data  
All or part of this quadrangle lies within a subsidence area



CONTOUR INTERVAL 5 FEET  
DATUM IS MEAN SEA LEVEL  
SOUNDINGS IN FEET—DATUM IS MEAN LOW WATER  
SHORELINE SHOWN REPRESENTS THE APPROXIMATE LINE OF MEAN HIGH WATER  
THE MEAN RANGE OF TIDE IS APPROXIMATELY 1 FOOT

THIS MAP COMPLIES WITH NATIONAL MAP ACCURACY STANDARDS  
FOR SALE BY U.S. GEOLOGICAL SURVEY, DENVER, COLORADO 80225 OR RESTON, VIRGINIA 22092  
AND BY THE STATE OF LOUISIANA, DEPARTMENT OF PUBLIC WORKS, BATON ROUGE, LOUISIANA 70804  
A FOLDER DESCRIBING TOPOGRAPHIC MAPS AND SYMBOLS IS AVAILABLE ON REQUEST



USGS  
HISTORICAL FILE  
TOPOGRAPHIC DIVISION

ROAD CLASSIFICATION  
Medium-duty ——— Light-duty ———  
Unimproved dirt ———  
State Route

YSCLOSKEY, LA.  
SW/4 YSCLOSKEY 15' QUADRANGLE  
N2945—W8937.5/7.5

1968  
AMS 8043 I SW—SERIES Y885