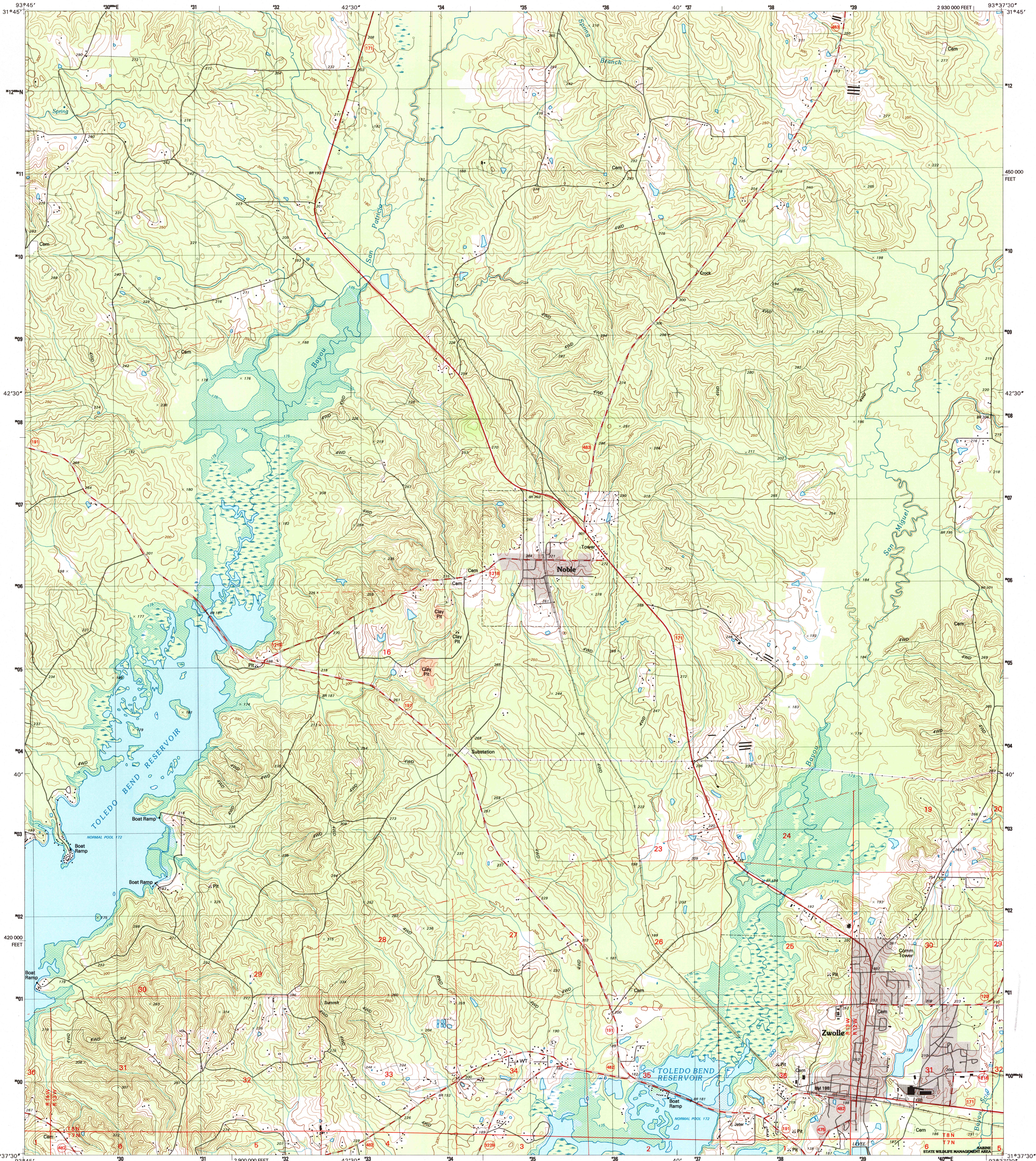


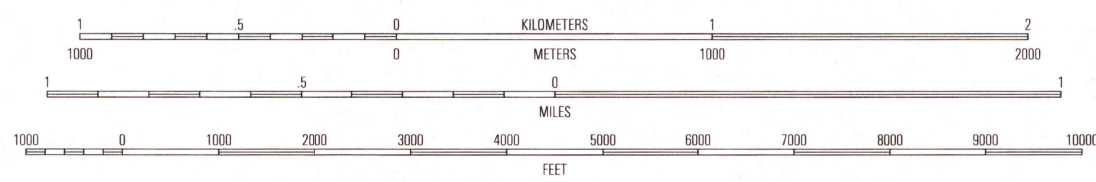
UNITED STATES
DEPARTMENT OF THE INTERIOR
GEOLOGICAL SURVEY

ZWOLLE QUADRANGLE
LOUISIANA-SABINE PARISH
7.5-MINUTE SERIES (TOPOGRAPHIC)



Produced by the United States Geological Survey
in cooperation with State of Louisiana agencies
Compiled by photogrammetric methods from imagery dated 1982
Field checked 1985. Revised from imagery dated 1994-95
FLSS and survey control current as of 1985. Map edited 1996
Contours not revised
North American Datum of 1983 (NAD 83). Projection and
1:000-meter grid: Universal Transverse Mercator, zone 15
10 000-foot ticks: Louisiana Coordinate System of 1983 (north zone)
North American Datum of 1927 (NAD 27) is shown by dashed
corner ticks. The values of the shift between NAD 83 and NAD 27
for 7.5-minute intersections are obtainable from National Geodetic
Survey NADCON software
There may be private inholdings within the boundaries of
the National or State reservations shown on this map

UTM GRID AND 1996 MAGNETIC NORTH
DECLINATION AT CENTER OF SHEET

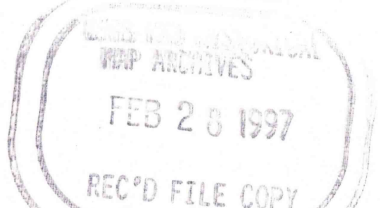


CONTOUR INTERVAL 10 FEET
NATIONAL GEODETIC VERTICAL DATUM OF 1929
THIS MAP COMPLIES WITH NATIONAL MAP ACCURACY STANDARDS
FOR SALE BY U.S. GEOLOGICAL SURVEY, DENVER, COLORADO 80225, OR RESTON, VIRGINIA 22092
AND LOUISIANA DEPARTMENT OF TRANSPORTATION AND DEVELOPMENT, BATON ROUGE, LOUISIANA 70804
A FOLDER DESCRIBING TOPOGRAPHIC MAPS AND SYMBOLS IS AVAILABLE ON REQUEST



1	2	3	1 Union Springs
			2 Converse
			3 Pleasant Hill
4		5	4 Brandy Creek
			5 Belmont
			6 East Hamilton
6	7	8	7 Beech Bayou
			8 Loring

ROAD CLASSIFICATION
Primary highway
hard surface
Secondary highway
hard surface
Light-duty road, hard or
improved surface
Unimproved road
Interstate Route
U.S. Route
State Route



ZWOLLE, LA
31093-F6-TF-024

1995

DMA 7247 II NW-SERIES V885

