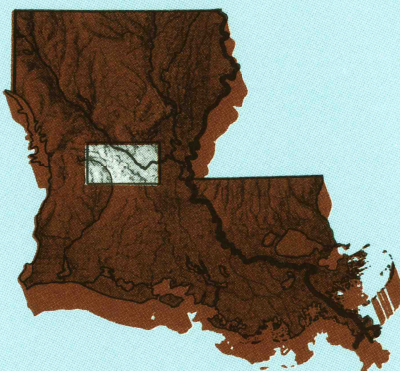


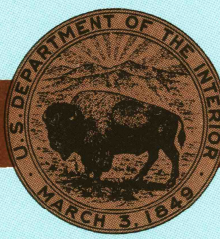
Alexandria  
LOUISIANA

1:100 000-scale  
planimetric map



30 X 60 MINUTE QUADRANGLE  
SHOWING

- Elevations in meters
- Highways, roads and other manmade structures
- Water features
- Woodland areas
- Geographic names



GEOLOGICAL SURVEY

1986

Produced by the United States Geological Survey

Compiled from USGS 1:24 000-scale topographic maps dated 1971-1985. Planimetry revised from aerial photographs taken 1981 and other source data. Revised information not field checked. Map edited 1986.

Projection and 10 000-meter grid, zone 15  
Universal Transverse Mercator  
25 000-foot grid ticks based on Louisiana coordinate system, north zone, 1927 North American Datum. To place on the predicted North American Datum 1983 move the projection lines 16 meters south and 14 meters east. There may be private inholdings within the boundaries of the National or State reservations shown on this map.

NATIONAL GEODETIC VERTICAL DATUM OF 1929  
ELEVATIONS SHOWN TO THE NEAREST METER

THIS MAP COMPLIES WITH NATIONAL MAP ACCURACY STANDARDS

CONVERSION TABLE		DECLINATION DIAGRAM		ADJOINING MAPS				
Meters	Feet			1	2	3		
1	3.2808			4	5	6	7	8
2	6.5617	UTM grid convergence (G) and 1983 magnetic declination (M) at center of map. Diagram is approximate.						
3	9.8425							
4	13.1234	To convert meters to feet multiply by 3.2808						
5	16.4042							
6	19.6850	To convert feet to meters multiply by 0.3048						
7	22.9659							
8	26.2467							
9	29.5276							
10	32.8084							

FOR SALE BY U. S. GEOLOGICAL SURVEY, DENVER, COLORADO 80225  
OR RESTON, VIRGINIA 22092

USGS MID HISTORICAL MAP

JUN 10 1986

REC'D FILE COPY

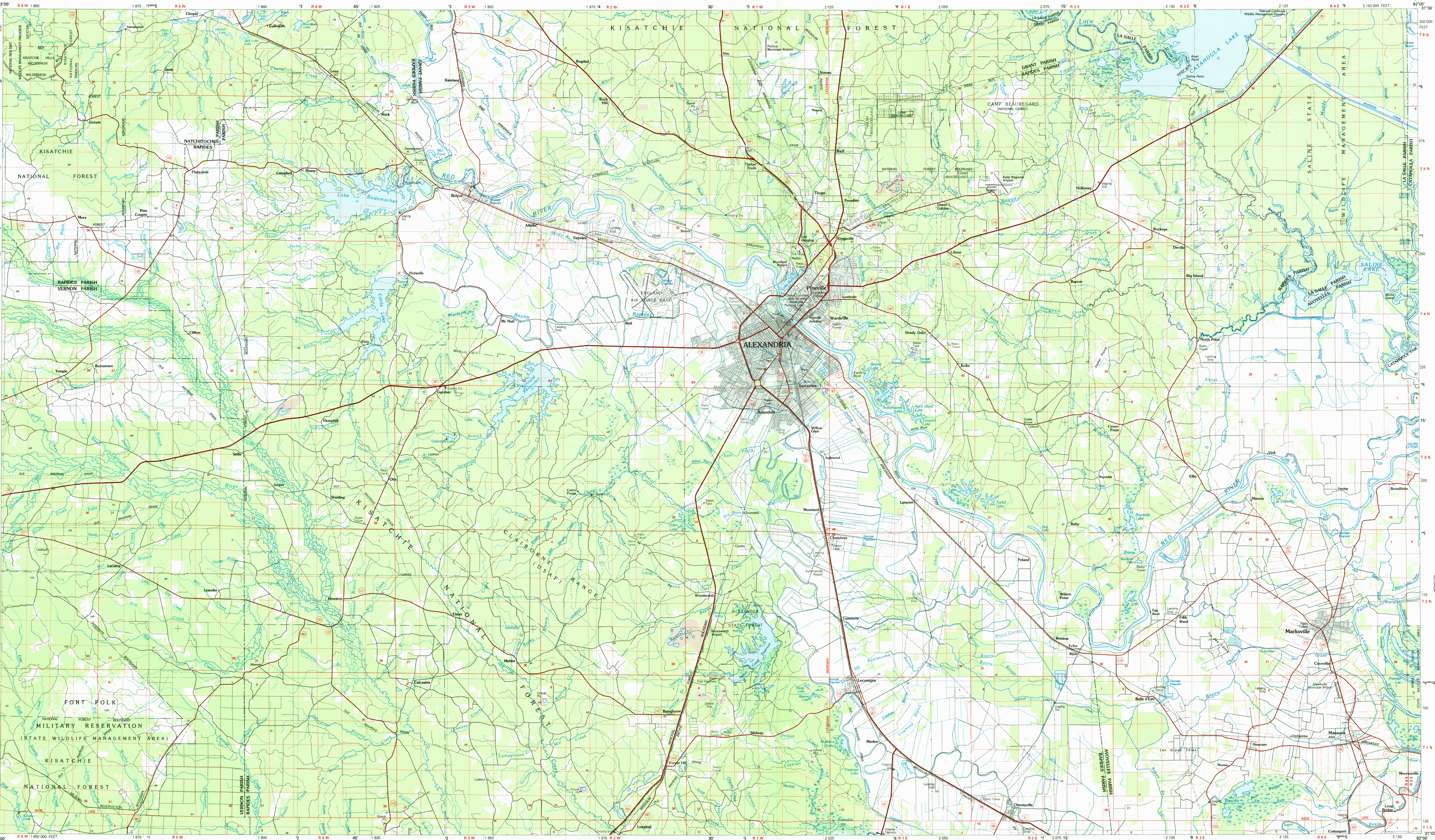
Topographic Map Symbols

Primary highway, hard surface	
Secondary highway, hard surface	
Light duty road, principal street, hard or improved surface	
Other road or street, gravel, hard or improved surface	
Road marker: Interstate, U. S. State	
Railroad: standard gauge, narrow gauge	
Bridge, overpass, underpass	
Tunnel: road, railroad	
Build up area: quality elevation	
Airport: landing field, landing strip	
National boundary	
State boundary	
County boundary	
National or State reservation boundary	
Land grant boundary	
U. S. public lands survey: range, township, section	
Range, township, section line: protected	
Power transmission line: pipeline	
Dam, dam with lock	
Cemetery: building	
Windmill; water well; spring	
Mine shaft; adit or cave; mine, quarry; gravel pit	
Cemetary; picnic area; U. S. location monument	
Road: adit, tunnel	
Disturbed surface: strip mine, lava, sand	
Contours: index, intermediate, supplementary	
Bathymetric contours: index, intermediate	
Stream, lake: perennial, intermittent	
Swamp, large and small; salt, brack and small	
Area to be submerged; marsh, swamp	
Land subject to controlled inundation; woodland	
Scrub; mangrove	
Orchard; vineyard	

A pamphlet describing topographic maps is available on request

ALEXANDRIA, LOUISIANA  
31092-A1-PL-100

1986



SCALE 1:100 000  
1 CENTIMETER ON THE MAP REPRESENTS 1 KILOMETER ON THE GROUND