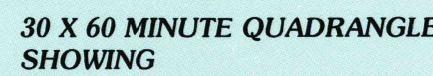


**1:100 000-scale  
planimetric map**



- Elevations in meters
- Highways, roads and other manmade structures
- Water features
- Woodland areas
- Geographic names



Produced by the United States Geological Survey  
Compiled from USGS 1:24 000 and 1:62 500-scale topographic maps  
dated 1958-1983. Planimetry revised from aerial photographs  
taken 1981-82 and other source data. Revised information not  
field checked. Map edited 1984

Projection and 10 000-meter grid, zone 16,  
Universal Transverse Mercator  
25 000-foot grid ticks based on Mississippi coordinate  
system, east zone and Louisiana coordinate system,  
south zone

**1927 North American Datum**  
To place on the predicted North American Datum 1983, move the projection lines 17 meters south and 6 meters east  
There may be private inholdings within the boundaries of the National or State reservations shown on this map

NATIONAL GEODETIC VERTICAL DATUM OF 1929  
ELEVATIONS SHOWN TO THE NEAREST METER

THIS MAP COMPLIES WITH NATIONAL MAP ACCURACY STANDARDS

CONVERSION TABLE	
Meters	Feet
1	3.2808
2	6.5617
3	9.8425
4	13.1234
5	16.4042
6	19.6850
7	22.9659
8	26.2467
9	29.5276
10	32.8084

Declination Diagram

GN  
MN  
11° 17' 23 Miles  
53 Miles

ADJOINING MAPS			
1	2	3	
1			
4	5		
6	7	8	

To convert meters to feet multiply by 3.2808

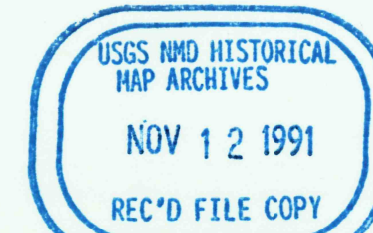
To convert feet to meters multiply by 0.3048

UTM grid convergence (GN) and (plus magnetic declination) (MN) at center of map

Diagram is approximate

1	Mc Comb
2	Hartiesburg
3	Cherokee
4	Ashe
5	Monch
6	Ponchatoula
7	Calaver
8	Baldou

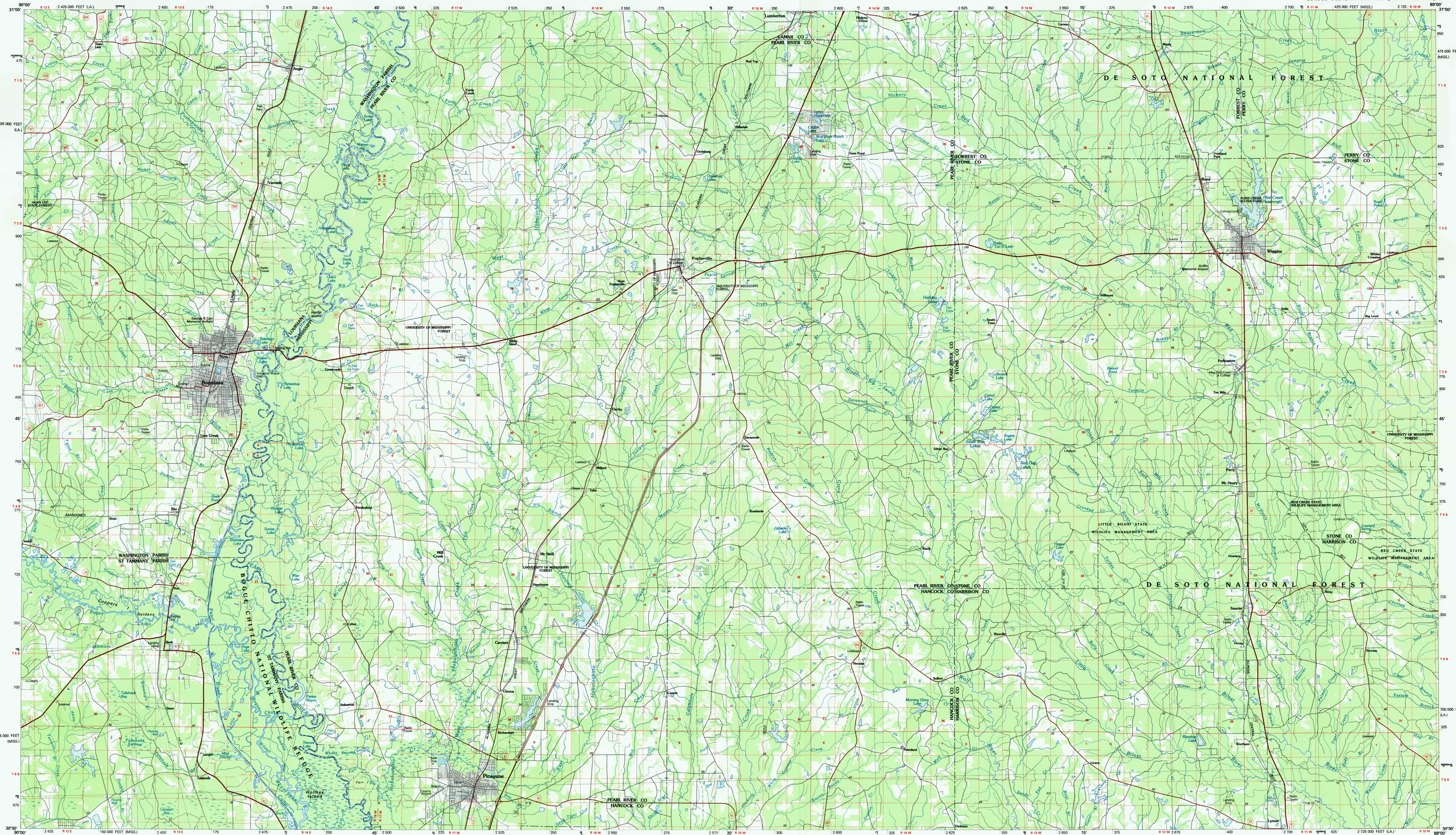
FOR SALE BY U.S. GEOLOGICAL SURVEY, DENVER, COLORADO 80225  
OR RESTON, VIRGINIA 22092



## Topographic Map Symbols

- Primary highway, hard surface  
Secondary highway, hard surface  
Light duty road, principal street, hard or improved surface  
Other road or avenue, turf  
Roads marker: Interstate, U.S. State  
Railroad: standard gage, narrow gage  
Bridge, overpass; underpass  
Tunnel, road; railroad  
Built up area, locally elevated  
Airport, landing field, landing strip  
State boundary  
County boundary  
National or State reservation boundary  
Land grant boundary  
U.S. public lands survey; range, township, section  
Range, township; section line, protracted  
Range representation line; pipeline  
Dam; dam with lock  
Cemetery; building  
Mineral; water well; spring  
Mine shaft; edit; or cave, mine, quarry, gravel pit  
Crossed by railroad; U.S. location monument  
Ruins; cliff dwelling  
Distorted surface; strip mine, lake, sand  
Stratum, index, intermediate, supplementary  
Bathymetric contour; index, intermediate  
Contour line; perennial, intermittent  
Rapids, large and small; falls, large and small  
Area to be submerged; marsh, swamp  
Land subject to controlled inundation; woodland  
Sandy meadow  
Channel; vineyard

A pamphlet describing topographic maps is available on request.



## A—MISSISSIPPI