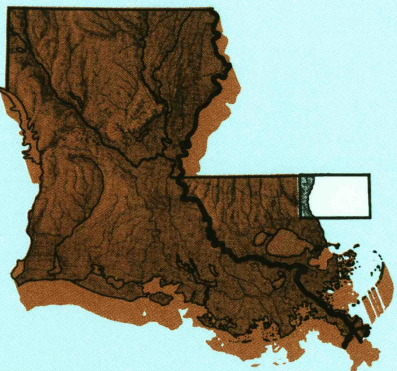


Bogalusa
LOUISIANA—MISSISSIPPI

1:100 000-scale *metric*
topographic map



30 X 60 MINUTE QUADRANGLE
SHOWING

- Contours and elevations in meters
- Highways, roads and other manmade structures
- Water features
- Woodland areas
- Geographic names



Produced by the United States Geological Survey
Compiled from USGS 1:24 000- and 1:62 500-scale topographic maps dated 1958-1983. Planimetry revised from aerial photographs taken 1985-91 and other source data. Revised information not field checked. Map edited 1994
North American Datum of 1927 (NAD 27). Projection and 10 000-meter grid: Universal Transverse Mercator, zone 16 25 000-foot ticks: Mississippi coordinate system, east zone and Louisiana coordinate system, south zone
The values of the shift between NAD 27 and North American Datum of 1983 (NAD 83) for 7.5-minute intersections are obtainable from National Geographic Survey NADCON software
There may be private inholdings within the boundaries of the National or State reservations shown on this map

CONTOUR INTERVAL 10 METERS
NATIONAL GEODETIC VERTICAL DATUM OF 1929
ELEVATIONS SHOWN TO THE NEAREST METER

THIS MAP COMPLIES WITH NATIONAL MAP ACCURACY STANDARDS
FOR SALE BY U.S. GEOLOGICAL SURVEY
DENVER, COLORADO 80225

CONVERSION TABLE		DECLINATION DIAGRAM	ADJOINING MAPS			
Meters	Feet		1	2	3	
1	3.2808		4	5		
2	6.5617		6	7	8	
3	9.8425					
4	13.1234					
5	16.4042					
6	19.6850					
7	22.9658					
8	26.2467					
9	29.5275					
10	32.8084					
To convert meters to feet multiply by 3.2808		To convert feet to meters multiply by 0.3048		UTM grid convergence (GM) and false magnetic declination (MD) at center of map. Diagram is approximate.		
				1 McComb 2 Hattiesburg 3 Citrouelle 4 Amite 5 Mobile 6 Ponchartroula 7 Gulfport 8 Biloxi		

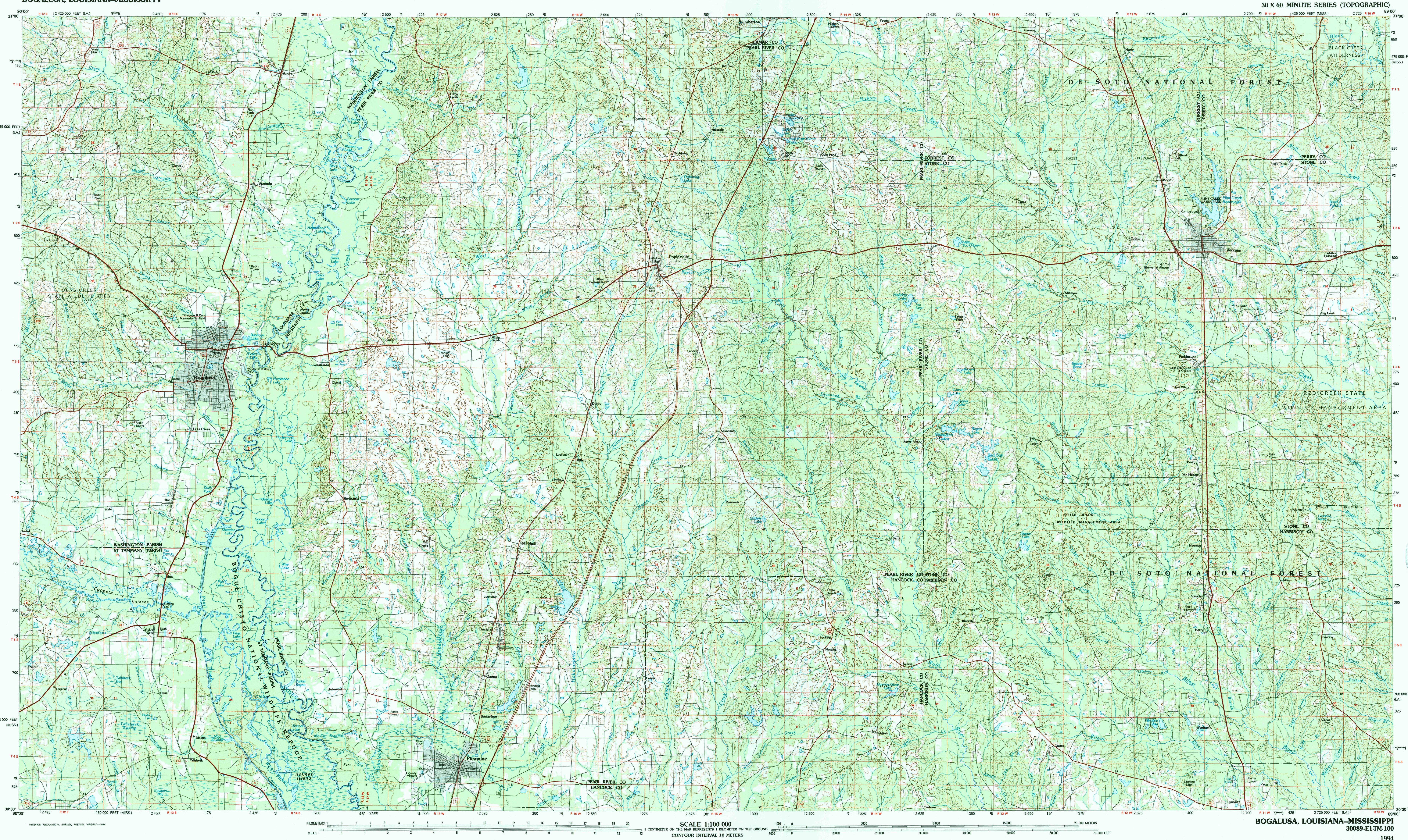
ISBN 0-107-23103-3

9 780607 231038

Topographic Map Symbols

Primary highway, hard surface	
Secondary highway, hard surface	
Light-duty road, principal street, hard or improved surface	
Other road or street, trail	
Route marker: Interstate, U.S. State	
Railroad: standard gauge; narrow gauge	
Bridge: overpass; underpass	
Tunnel: road, railroad	
Built-up area, locality, elevation	
Airport: landing field, landing strip	
National boundary	
State boundary	
County boundary	
Civil township boundary	
National or State reservation boundary	
Land grant boundary	
U.S. public lands survey: range, township, section	
Range, township, section line, protected	
Power transmission line, pipeline	
Dam, dam with lock	
Cemetery, building	
Wellhead, water well, spring	
Mine shaft, adit or cave, mine, quarry, gravel pit	
Campground, picnic area, U.S. location monument	
Ruin, cliff dwelling	
Distorted surface: strip mine, lava, sand	
Contours: index, intermediate, supplementary	
Bathymetric contours: index, intermediate	
Stream, lake: perennial, intermittent	
Rapids, large and small; falls, large and small	
Area to be submerged: marsh, swamp	
Land subject to controlled inundation; woodland	
Scrub, mangrove	
Orchard; vineyard	

A pamphlet describing topographic maps is available on request



SCALE 1:100 000

1 CENTIMETER ON THE MAP REPRESENTS 1 KILOMETER ON THE GROUND

CONTOUR INTERVAL 10 METERS

BOGALUSA, LOUISIANA—MISSISSIPPI

30089-E1-TM-100

1994