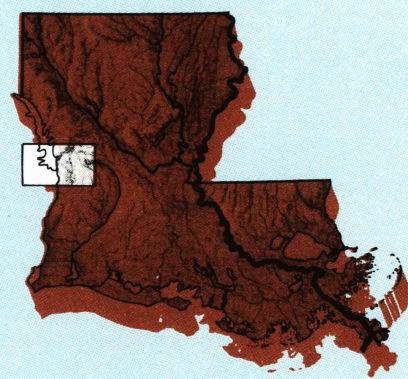


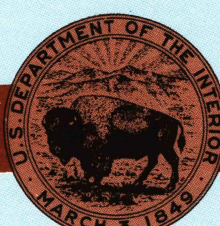
Leesville
LOUISIANA-TEXAS

1:100 000-scale metric
topographic map



30 X 60 MINUTE QUADRANGLE
SHOWING

- Contours and elevations in meters
- Highways, roads and other manmade structures
- Water features
- Woodland areas
- Geographic names



GEOLOGICAL SURVEY

1986

Produced by the United States Geological Survey

Compiled from USGS 1:24 000-scale topographic maps dated 1954-1985. Planimetry revised from aerial photographs taken 1981 and other source data. Revised information not field checked. Map edited 1986. Projection and 10 000-meter grid, zone 15 Universal Transverse Mercator. 25 000-foot grid ticks based on Louisiana coordinate system, north zone and Texas coordinate system central zone, 1927 North American Datum. To place on the predicted North American Datum 1983 move the projection lines 16 meters south and 17 meters east. There may be private inholdings within the boundaries of the National or State reservations shown on this map.

CONTOUR INTERVAL 10 METERS
NATIONAL GEODETIC VERTICAL DATUM OF 1929
ELEVATIONS SHOWN TO THE NEAREST METER

THIS MAP COMPLIES WITH NATIONAL MAP ACCURACY STANDARDS

CONVERSION TABLE		DECLINATION DIAGRAM		ADJOINING MAPS		
Meters	Feet			1	2	3
1	3.2808					
2	6.5617			4	5	
3	9.8425					
4	13.1234			6	7	8
5	16.4042					
6	19.6850					
7	22.9659					
8	26.2467					
9	29.5276					
10	32.8084					
To convert meters to feet multiply by 3.2808		UTM grid convergence (IGN) and 1985 magnetic declination (MD) at center of map. Diagram is approximate.		1	Nacogdoches	
To convert feet to meters multiply by 0.3048				2	Nacogdoches	
				3	Winnfield	
				4	Lufkin	
				5	Alexandria	
				6	Livingston	
				7	De Witt	
				8	Ville Platte	

FOR SALE BY U. S. GEOLOGICAL SURVEY, DENVER, COLORADO 80205
OR RESTON, VIRGINIA 22092

USGS NMD HISTORICAL MAP

SEP 20 1988

REC'D FILE COPY

Topographic Map Symbols

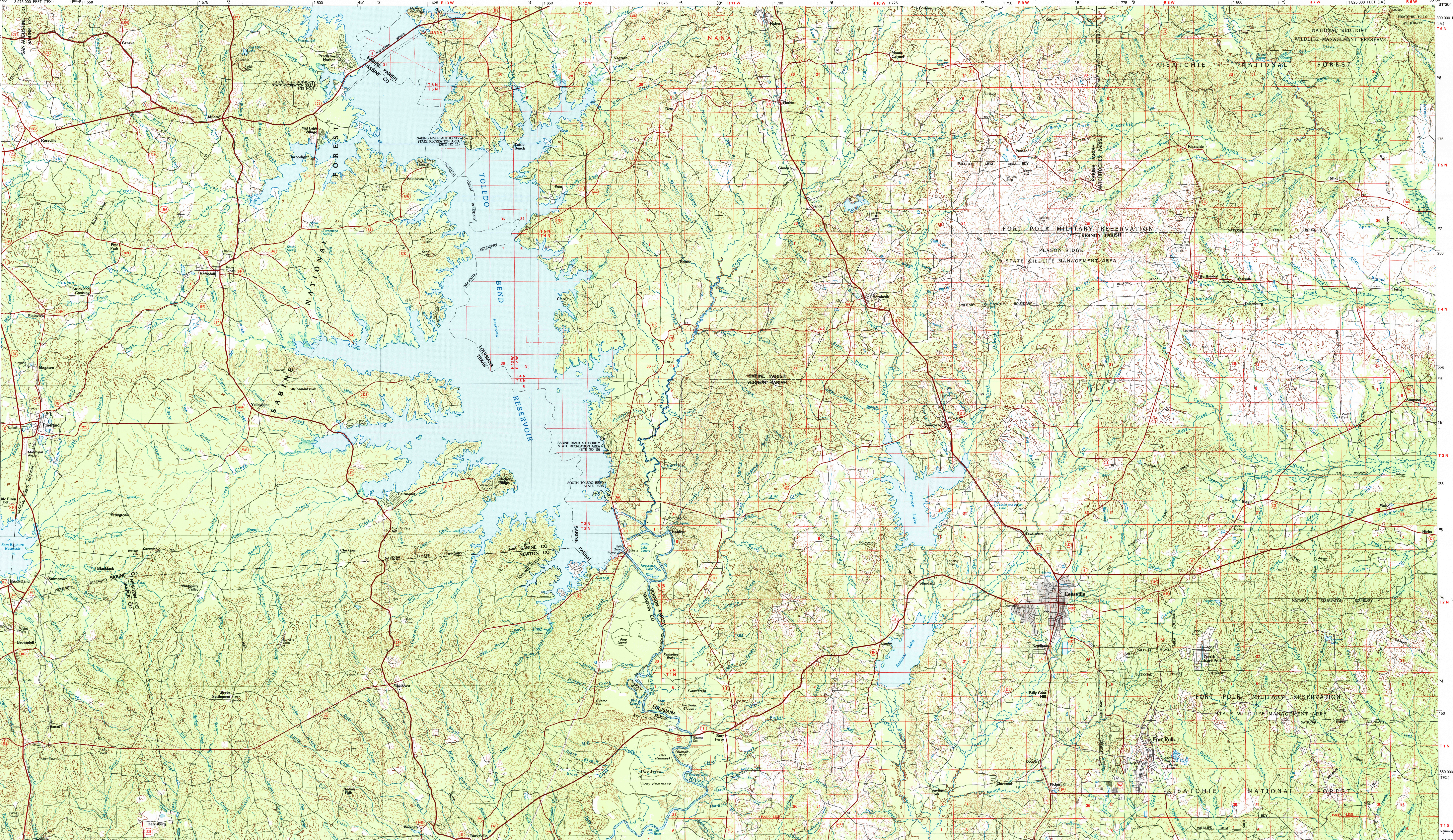
Primary highway, hard surface	
Secondary highway, hard surface	
Light duty road, principal street, hard or improved surface	
Other road or street, trail	
Route marker: Interstate, U. S., State	
Railroad: standard gauge, narrow gauge	
Bridge: overpass, underpass	
Tunnel: road, railroad	
Built up area, locality, elevation	
Airport, landing field, landing strip	
National boundary	
State boundary	
County boundary	
National or State reservation boundary	
Land grant boundary	
U. S. public land survey: range, township, section	
Range, township, section line: protected	
Power transmission line: pipeline	
Dam, dam with lock	
Cemetery, building	
Wellhead, water well, spring	
Mine shaft; adit or cave; mine, quarry, gravel pit	
Campground; picnic area, U. S. location monument	
Ruin; cliff dwelling	
Distorted surface: strip mine, lava, sand	
Contours: index, intermediate, supplementary	
Bathymetric contours: index, intermediate	
Stream, lake: perennial, intermittent	
Rapids, large and small; falls, large and small	
Area to be submerged; marsh, swamp	
Land subject to controlled inundation; woodland	
Scrub, mangrove	
Orchard; vineyard	

A simplified descriptive topographic map is available on request

LEESVILLE, LOUISIANA-TEXAS

31093-A1-TM-100

1986



INTERIOR GEOLOGICAL SURVEY, RESTON, VIRGINIA 22092

SCALE 1:100 000
1 CENTIMETER ON THE MAP REPRESENTS 1 KILOMETER ON THE GROUND
CONTOUR INTERVAL 10 METERS

