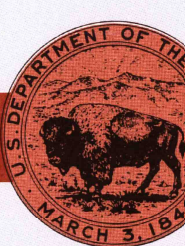


LOUISIANA

- Contours and elevations in meters
- Highways, roads and other manmade structures
- Water features
- Woodland areas
- Geographic names




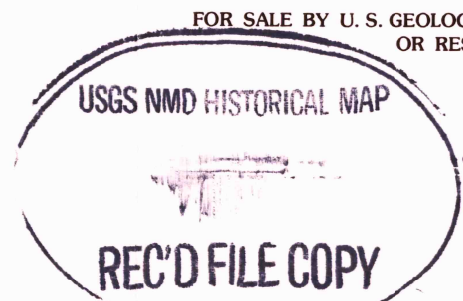
GEOLOGICAL SURVEY

1983

There may be private inholdings within the boundaries of

THIS MAP COMPLIES WITH NATIONAL MAP ACCURACY STANDARDS

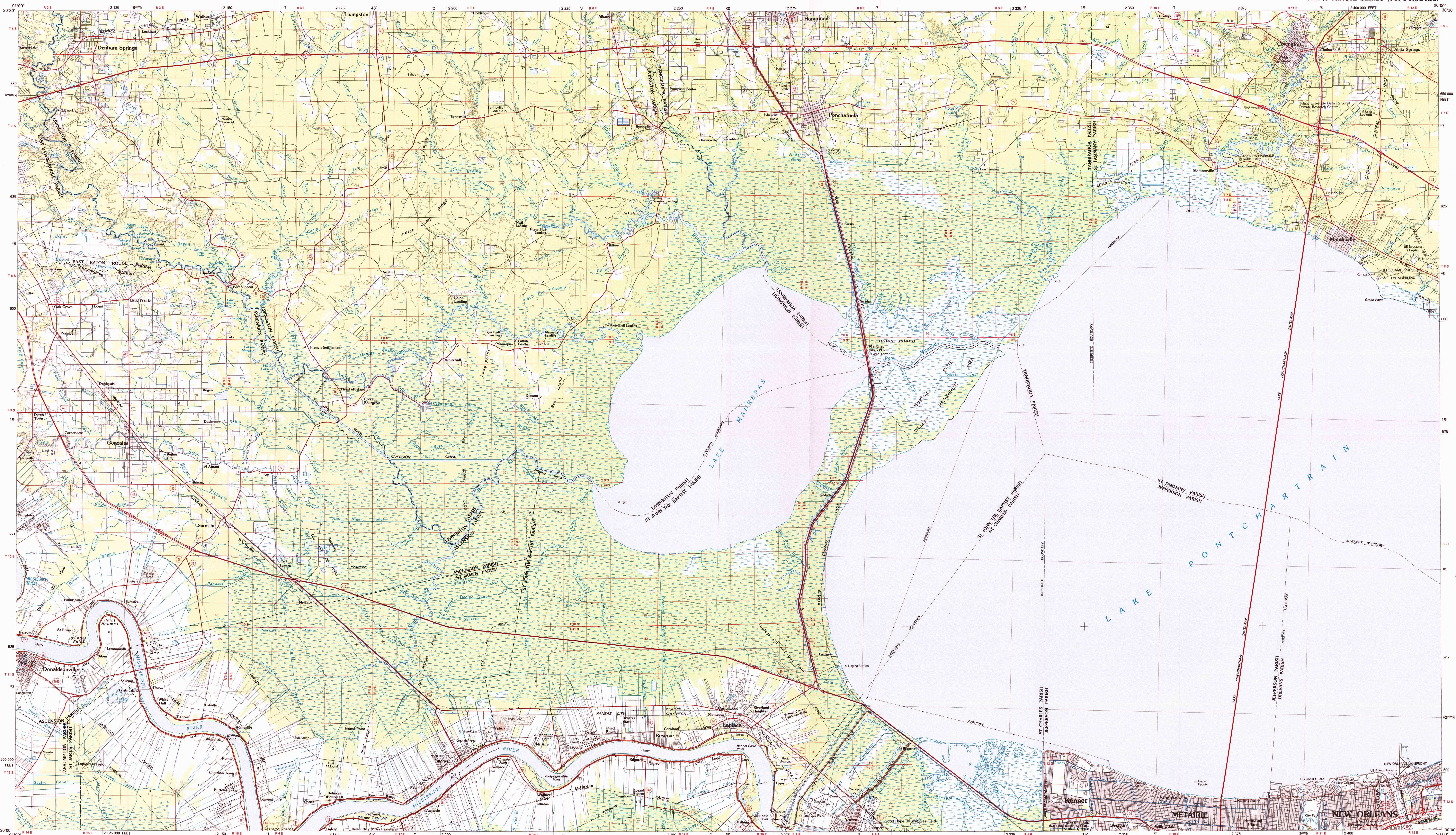
CONVERSION TABLE		DECLINATION DIAGRAM		ADJOINING MAPS			
Meters	Feet			1	2	3	
1	3.2808						
2	6.5617						
3	9.8425						
4	13.1234						
5	16.4042						
6	19.6850						
7	22.9659						
8	26.2467						
9	29.5276						
10	32.8084						
To convert meters to feet multiply by 3.2808		UTM grid convergence (GN and MN) magnetic declination (MN) at center of map Diagram is approximate		1	2	3	
To convert feet to meters multiply by 0.3048				4			5
				6	7	8	
				1 New Roads 2 Amite 3 Bogalusa 4 Baton Rouge 5 Gulfport 6 Morgan City 7 New Orleans 8 Black Bay			



Topographic Map Symbols

Primary highway, hard surface	
Secondary highway, hard surface	
Light duty road, principal street, hard or improved surface	
Minor road or street, trail	
Route marker: Interstate: U.S. State	
Railroad: standard gauge; narrow gauge	
Bridge: overpass; underpass	
Tunnel: road; railroad	
Right up area: locality, elevation	
Airport: landing field; landing strip	
National boundary	
State boundary	
County boundary	
National or State reservation boundary	
Land grant boundary	
U.S. public lands survey: range, township; section	
Range, township, section line: protracted	
Power transmission line: pipeline	
Dam; dam with lock	
Cemetery; building	
Mineral; water well; spring	
Mine shaft; adit or cave; mine, quarry; gravel pit	
Campground; picnic area; U.S. location monument	
Rivers; cliff dwelling	
Disturbed surface: strip mine, lava, sand	
Corridor: index; intermediate; supplementary	
Background colors: index, intermediate	
Stream, lake; perennial; intermittent	
Rapids, large and small; falls, large and small	
Area to be submerged; marsh, swamp	
Land subject to controlled inundation: woodland	
Swamp, mangrove	
Orchard; vineyard	

A pamphlet describing topographic maps is available on request.



PONCHATOULA, LOUISIANA

M-100