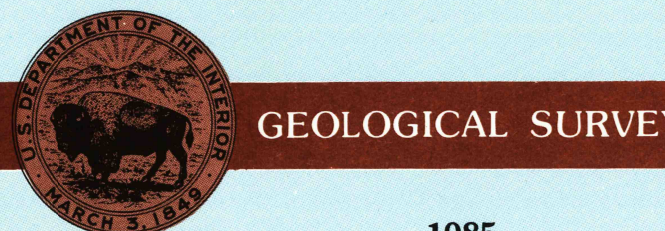



- Elevations in meters
- Highways, roads and other manmade structures
- Water features
- Woodland areas
- Geographic names



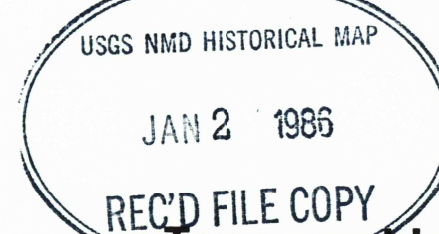
Produced by the United States Geological Survey  
Compiled from USGS 1:24 000 and 1:62 500-scale topographic maps dated 1957-1962. Planimetry revised from aerial photographs taken 1963 and other source data.  
Revised information not field checked.  
Map edited 1985.  
Projection and 10 000-meter grid, zone 15  
Universal Transverse Mercator  
25 000-foot grid ticks based on Louisiana coordinate system, north zone, 1927 North American Datum.  
To place on the predicted North American Datum 1983 move the projection lines 13 meters south and 17 meters east.  
There may be private inholdings within the boundaries of the National or State reservations shown on this map.

NATIONAL GEODETIC VERTICAL DATUM OF 1929  
ELEVATIONS SHOWN TO THE NEAREST METER

THIS MAP COMPLIES WITH NATIONAL MAP ACCURACY STANDARDS

CONVERSION TABLE		DECLINATION DIAGRAM		ADJOINING MAPS		
Meters	Feet			1	2	3
1	3.2808			4	5	
2	6.5617					
3	9.8425					
4	13.1234					
5	16.4042					
6	19.6850					
7	22.9659					
8	26.2467					
9	29.5275					
10	32.8084					
To convert meters to feet multiply by 3.2808		UTM grid convergence (CG) and 1983 magnetic declination (MD) at center of map. Diagram is approximate.		1 Marshall 2 Shreveport North 3 Monroe North 4 Henderson 5 Monroe South 6 Nacogdoches 7 Natchitoches 8 Winnfield		
To convert feet to meters multiply by 0.3048						

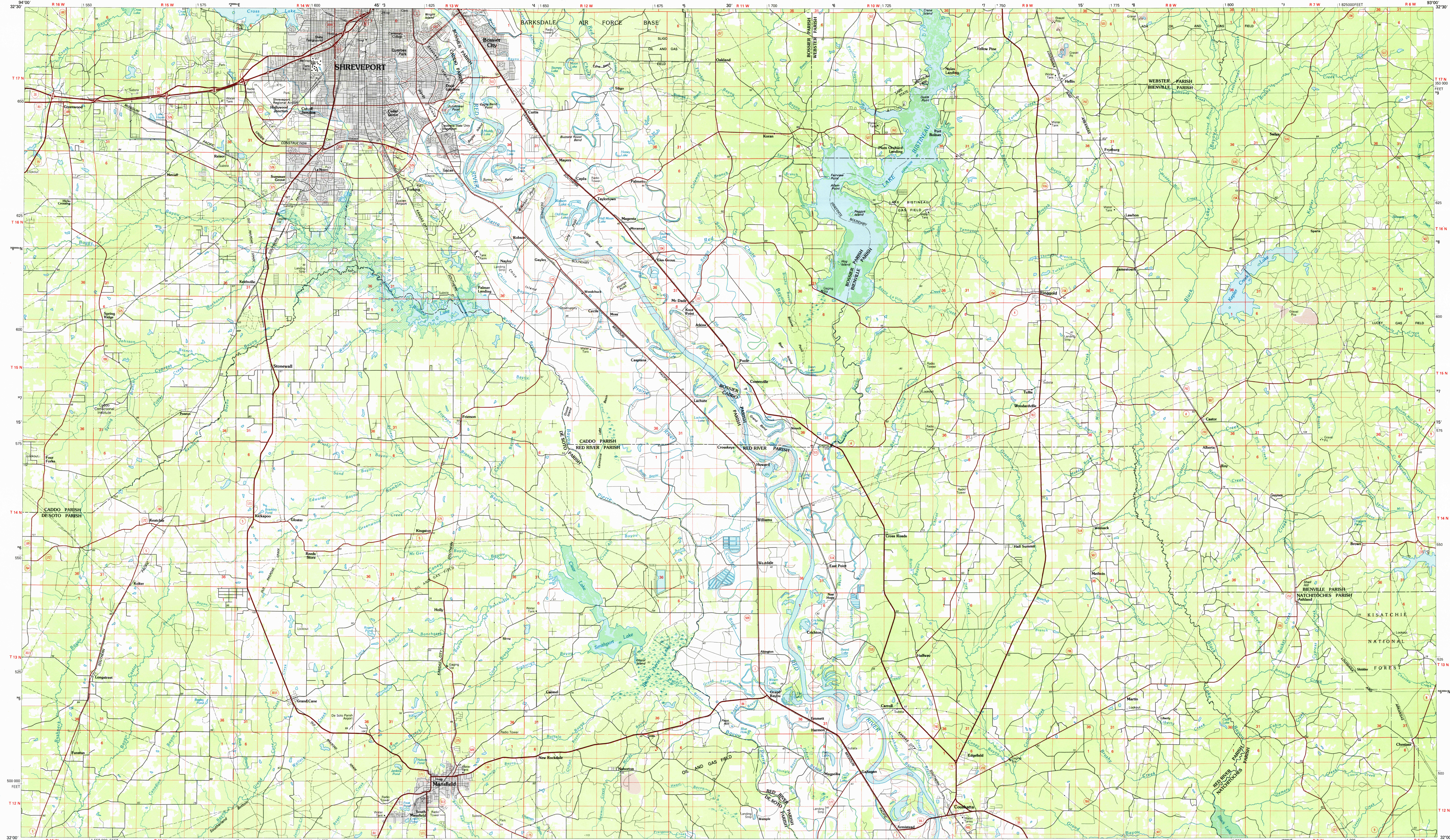
FOR SALE BY U. S. GEOLOGICAL SURVEY, DENVER, COLORADO 80225  
OR RESTON, VIRGINIA 22092



Topographic Map Symbols

- Primary highway, hard surface
- Secondary highway, hard surface
- Light duty road, principal street, hard or improved surface
- Other road or street, trail
- Road marker: intermittent, U. S., State
- Railroad: standard gage; narrow gage
- Bridge; overpass; underpass
- Tunnel: road; railroad
- Built up area; locality; elevation
- Airport; landing field; landing strip
- National boundary
- State boundary
- County boundary
- National or State reservation boundary
- Land grant boundary
- U. S. public lands survey; range, township; section
- Range, township; section line; protected
- Power transmission line; pipeline
- Dam; dam with lock
- Cemetery; building
- Windmill; water well; spring
- Mine shaft; pit or cave; mine, quarry; gravel pit
- Campground; picnic area; U. S. location monument
- Roads, large and small; trails, large and small
- Area to be submerged; marsh, swamp
- Land subject to controlled inundation; woodland
- Scrub; mangrove
- Orchard; vineyard

A pamphlet describing topographic maps is available on request



SCALE 1:100 000

SHREVEPORT SOUTH, LOUISIANA  
32093-A1-PL-100