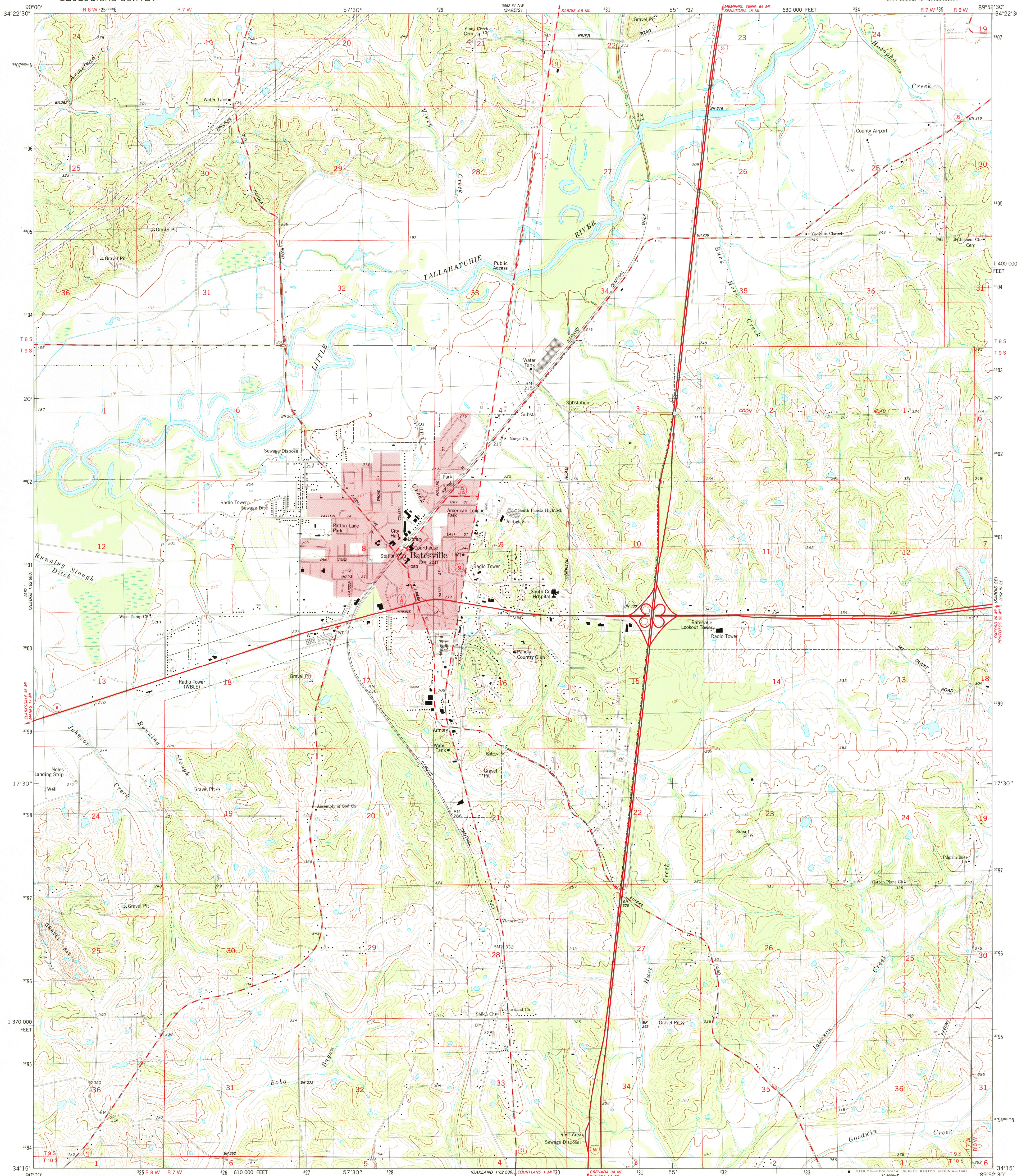
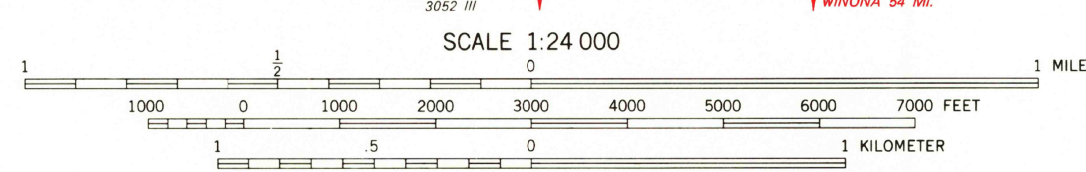
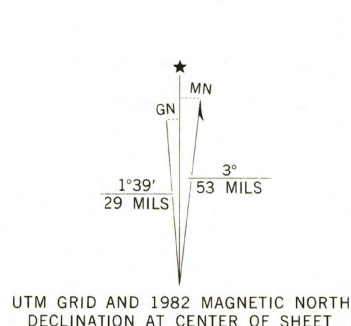


UNITED STATES
DEPARTMENT OF THE INTERIOR
GEOLOGICAL SURVEY

BATESVILLE QUADRANGLE
MISSISSIPPI-PANOLA CO.
7.5 MINUTE SERIES (TOPOGRAPHIC)



Mapped, edited, and published by the Geological Survey
Control by USGS and NOS/NOAA
Topography by photogrammetric methods from aerial photographs
taken 1977. Field checked 1978. Map edited 1982
Projection and 10,000-foot grid ticks: Mississippi coordinate
system, west zone (transverse Mercator)
1000-meter Universal Transverse Mercator grid, zone 16
1927 North American Datum
To place on the predicted North American Datum 1983
move the projection lines 9 meters south and
8 meters east as shown by dashed corner ticks
Red tint indicates areas in which only landmark buildings are shown
Fine red dashed lines indicate selected fence and field lines where
generally visible on aerial photographs. This information is unchecked



CONTOUR INTERVAL 10 FEET
DOTTED LINES REPRESENT 5-FOOT CONTOURS
NATIONAL GEODETIC VERTICAL DATUM OF 1929

THIS MAP COMPLIES WITH NATIONAL MAP ACCURACY STANDARDS
FOR SALE BY U. S. GEOLOGICAL SURVEY, RESTON, VIRGINIA 22092
A FOLDER DESCRIBING TOPOGRAPHIC MAPS AND SYMBOLS IS AVAILABLE ON REQUEST

ROAD CLASSIFICATION
Primary highway, hard surface
Secondary highway, hard surface
Light-duty road, hard or improved surface
Unimproved road
Interstate Route
U. S. Route
State Route



BATESVILLE, MISS.
SW/4 SARDIS 15' QUADRANGLE
N3415-W8952 5/7.5

1982

DMA 3052 IV SW-SERIES V843

RETURN TO:
USGS AND HISTORICAL MAP ARCHIVES

2150