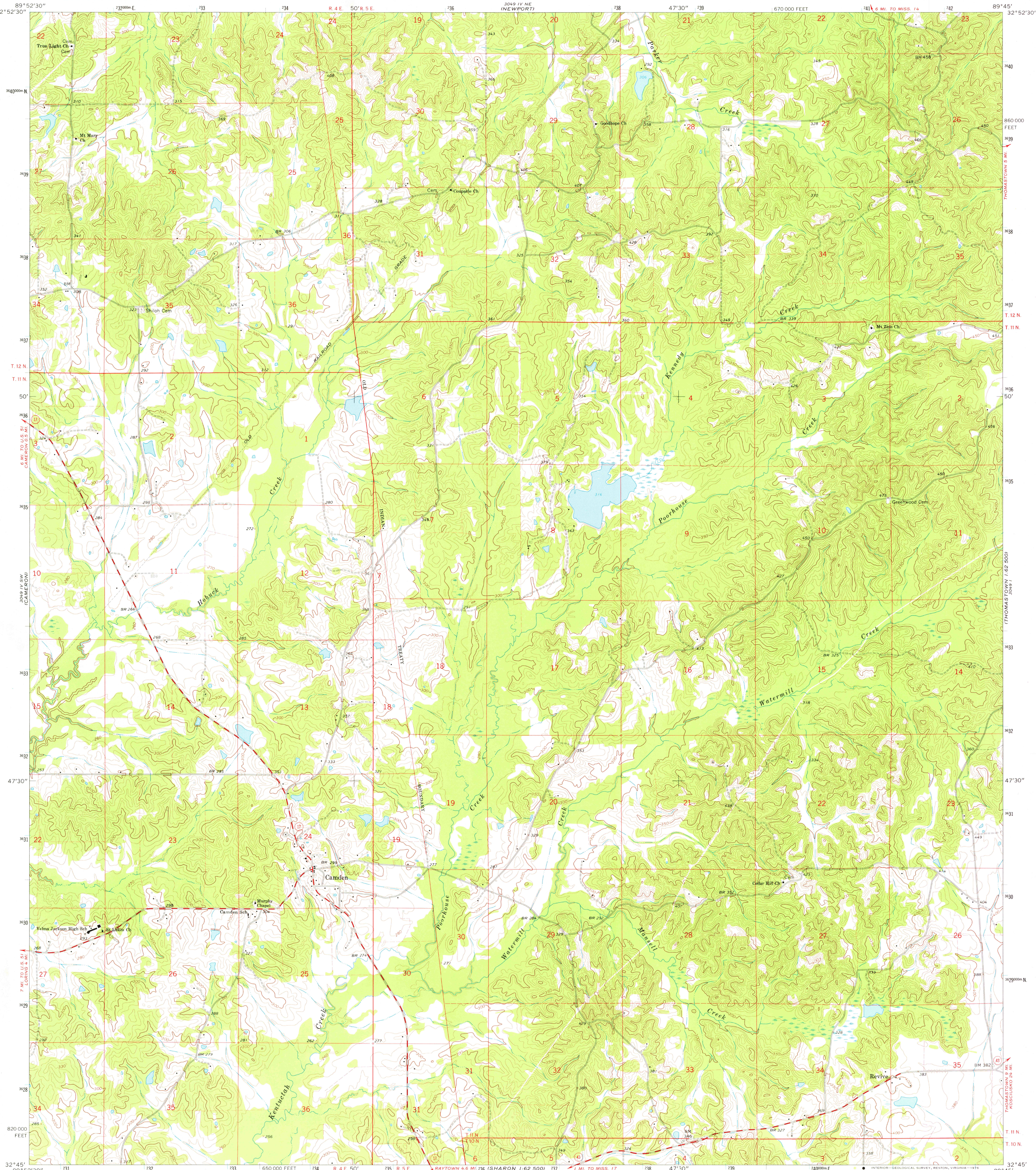


3049 IV NE
GOODMAN
1:62,500

3049 IV NE
THOMASTOWN
1:62,500

UNITED STATES
DEPARTMENT OF THE INTERIOR
GEOLOGICAL SURVEY

CAMDEN QUADRANGLE
MISSISSIPPI—MADISON CO.
7.5 MINUTE SERIES (TOPOGRAPHIC)
SE/4 GOODMAN 15' QUADRANGLE



SHARON 1:62,500
3049 IV SW

3049 IV SE
THOMASTOWN
1:62,500

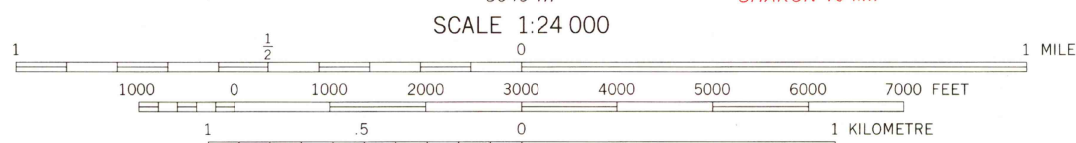
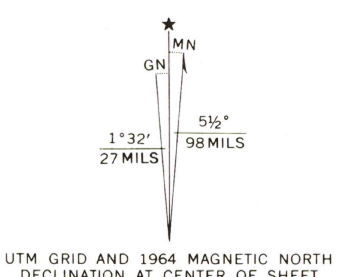
Mapped, edited, and published by the Geological Survey

Control by USGS and USC&GS

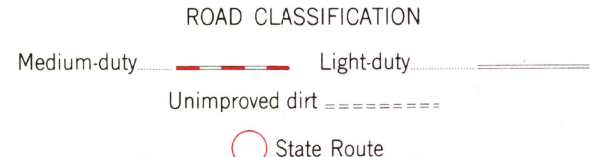
Topography by photogrammetric methods from aerial photographs taken 1960. Field checked 1964

Polyconic projection. 1927 North American datum
10,000-foot grid based on Mississippi coordinate system, west zone
1000-metre Universal Transverse Mercator grid ticks, zone 16, shown in blue

Fine red dashed lines indicate selected fence and field lines where generally visible on aerial photographs. This information is unchecked



THIS MAP COMPLIES WITH NATIONAL MAP ACCURACY STANDARDS
FOR SALE BY U. S. GEOLOGICAL SURVEY, RESTON, VIRGINIA 22092
A FOLDER DESCRIBING TOPOGRAPHIC MAPS AND SYMBOLS IS AVAILABLE ON REQUEST



CAMDEN, MISS.
SE/4 GOODMAN 15' QUADRANGLE
N3245—W8945/7.5

USGS
Historical File
Topographic Division
1964
AMS 3049 IV SE—SERIES V843