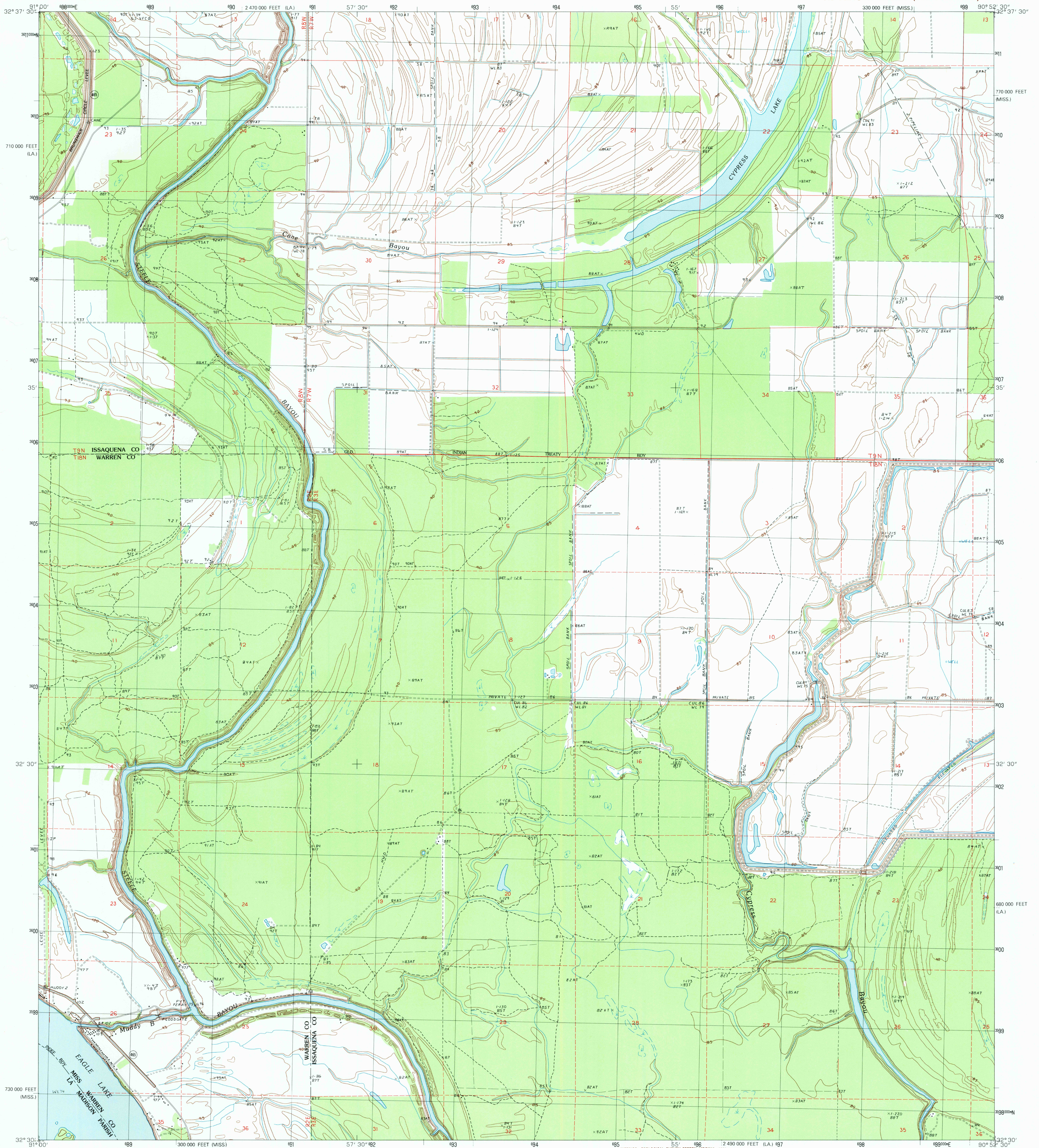


UNITED STATES  
DEPARTMENT OF THE INTERIOR  
GEOLOGICAL SURVEY

CANE BAYOU QUADRANGLE  
MISSISSIPPI-LOUISIANA  
7.5 MINUTE SERIES (TOPOGRAPHIC)



PRODUCED BY THE UNITED STATES GEOLOGICAL SURVEY  
CONTROL BY USGS AND NOS/NOAA  
COMPILED FROM AERIAL PHOTOGRAPHS TAKEN 1982  
FIELD CHECKED 1986. MAP EDITED 1988  
PROJECTION TRANSVERSE MERCATOR  
GRID: 1000-METER UNIVERSAL TRANSVERSE MERCATOR ZONE 15  
10,000-FOOT STATE GRID TICKS  
UTM GRID DECLINATION 1907 EAST  
1988 MAGNETIC NORTH DECLINATION 300' EAST  
VERTICAL DATUM NATIONAL GEODETIC VERTICAL DATUM OF 1929  
HORIZONTAL DATUM 1927 NORTH AMERICAN DATUM  
To place on the predicted North American Datum of 1983,  
move the projection lines as shown by dashed corner ticks  
(13 meters south and 10 meters east)  
There may be private inholdings within the boundaries of any  
Federal or State reservations shown on this map  
No distinction made between houses, barns, and other buildings

PROVISIONAL MAP  
Produced from original  
manuscript drawings. Infor-  
mation shown as of date of  
photography.

SCALE 1:24 000  
1 0 1000 2000 3000 4000 5000 6000 7000 8000 9000 10 000  
FEET  
1 0 1000 2000 3000 4000 5000 6000 7000 8000 9000 10 000  
KILOMETERS  
CONTOUR INTERVAL 5 FEET  
To convert feet to meters multiply by .3048  
To convert meters to feet multiply by 3.2808  
THIS MAP COMPLIES WITH NATIONAL MAP ACCURACY STANDARDS  
FOR SALE BY U. S. GEOLOGICAL SURVEY, DENVER, COLORADO 80225, OR RESTON, VIRGINIA 22092

1	2	3	1 Filer
2	3	4	2 Onward
3	4	5	3 Valley Park
4	5	6	4 Eagle Bend
5	6	7	5 Flowerree
6	7	8	6 Ashly
7	8	9	7 Long Lake
8	9	10	8 Redwood

ROAD LEGEND  
Improved Road  
Unimproved Road  
Trail  
Interstate Route  
U. S. Route  
State Route  
CANE BAYOU, MISS.-LA.  
SW4 ONWARD 15 QUADRANGLE  
PROVISIONAL EDITION 1988  
32090-E8-TF-024

USGS MAP HISTORICAL MAP  
NOV 22 1988  
REC'D FILE COPY