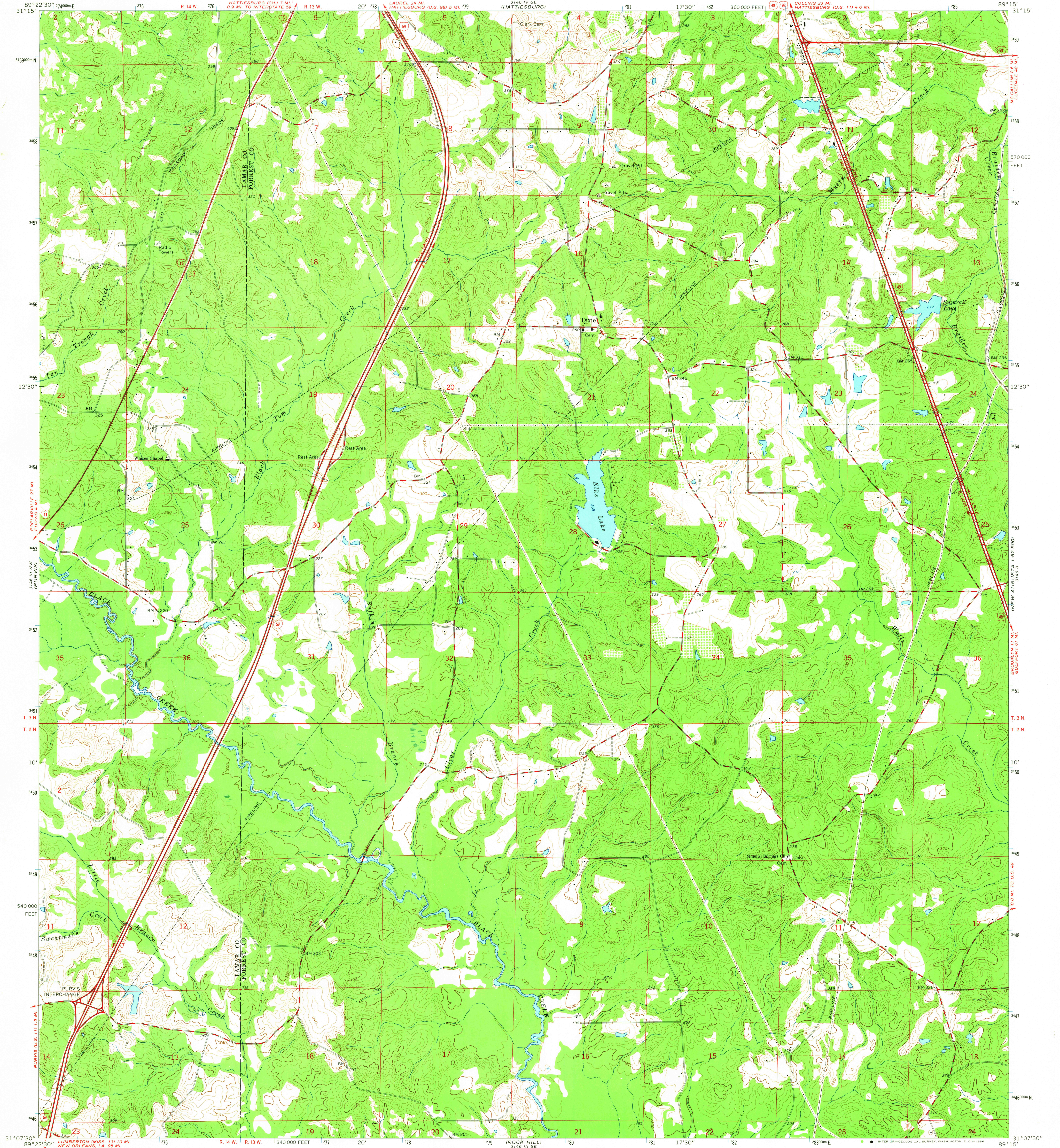


UNITED STATES
DEPARTMENT OF THE INTERIOR
GEOLOGICAL SURVEY

DIXIE QUADRANGLE
MISSISSIPPI
7.5 MINUTE SERIES (TOPOGRAPHIC)



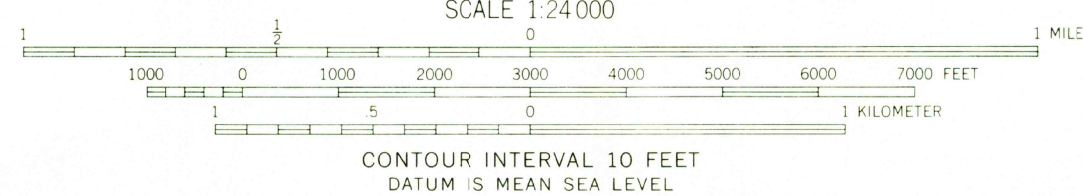
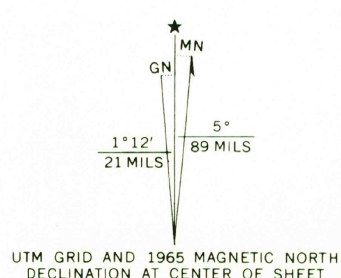
Mapped, edited, and published by the Geological Survey

Control by USGS and USC&GS

Topography by photogrammetric methods from aerial photographs taken 1960 and 1963. Field checked 1965

Polycyclic projection. 1927 North American datum 10,000-foot grid based on Mississippi coordinate system, east zone 1000-meter Universal Transverse Mercator grid ticks, zone 16, shown in blue

Fine red dashed lines indicate selected fence and field lines where generally visible on aerial photographs. This information is unchecked



USGS
Historical File
Topographic Division



U.S.G.S.
FILE COPY
TOPOGRAPHIC DIVISION

DIXIE, MISS.
N3107.5-W8915.7.5

1965

AMS 3146 III NE-SERIES V843

2195
MAY 20 1966