

2948 I SE
CLINTON

2948 I SE
TERRY

2948 I SE
CLINTON

2948 I SE
TERRY

UNITED STATES
DEPARTMENT OF THE INTERIOR
GEOLOGICAL SURVEY

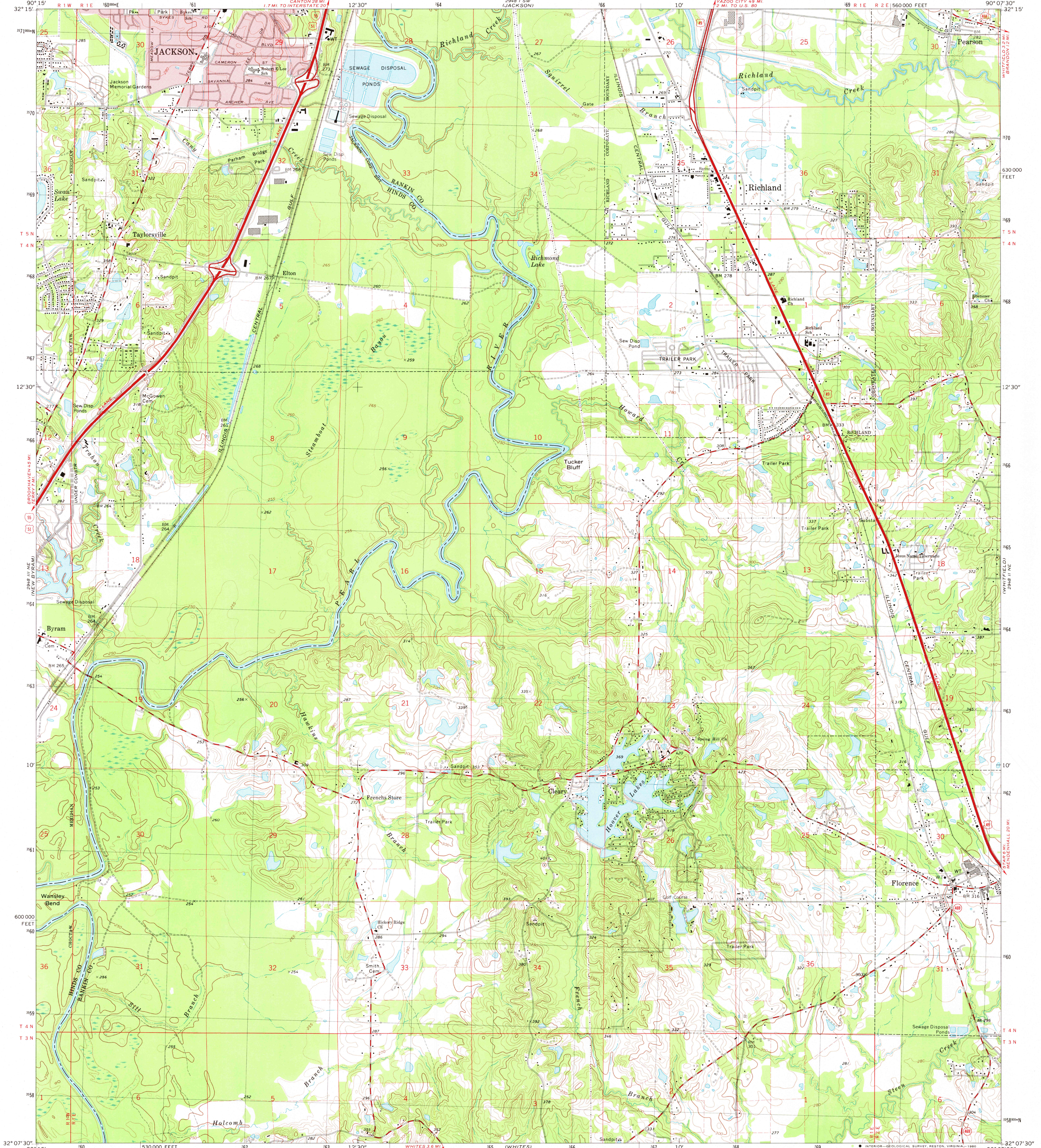
FLORENCE QUADRANGLE
MISSISSIPPI
7.5 MINUTE SERIES (TOPOGRAPHIC)

2948 I SE
LACKSON SE

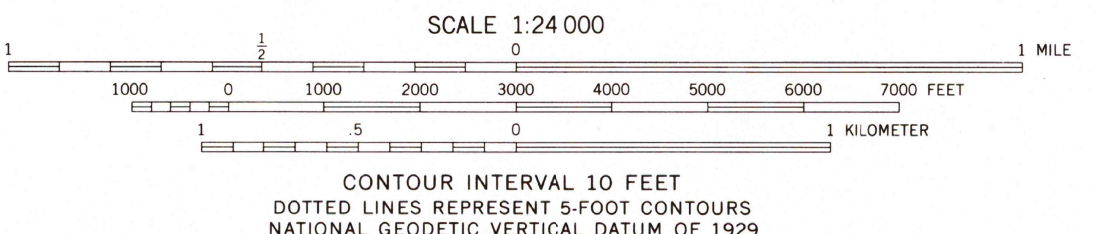
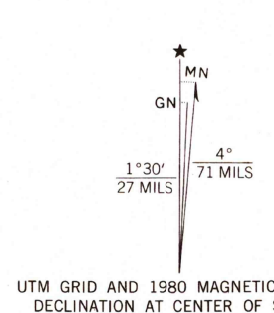
2948 I SE
LACKSON SE

2948 I SE
LACKSON SE

2948 I SE
LACKSON SE



Mapped, edited, and published by the Geological Survey
Control by USGS and NOS/NOAA
Topography by photogrammetric methods from aerial photographs
taken 1968. Field checked 1971
Revision primarily limited to detail visible on high-altitude photographs
taken 1977. Field checked 1979. Map edited 1980
Projection and 10,000-foot grid ticks: Mississippi coordinate
system, west zone (transverse Mercator)
1000-meter Universal Transverse Mercator grid, zone 15
1927 North American Datum
To place on the predicted North American Datum 1983
move the projection lines 14 meters south and
8 meters east as shown by dashed corner ticks
Red tint indicates area in which only landmark buildings are shown
Fine red dashed lines indicate selected fence and field lines where
generally visible on aerial photographs. This information is unchecked



THIS MAP COMPLIES WITH NATIONAL MAP ACCURACY STANDARDS
FOR SALE BY U. S. GEOLOGICAL SURVEY, RESTON, VIRGINIA 22092
A FOLDER DESCRIBING TOPOGRAPHIC MAPS AND SYMBOLS IS AVAILABLE ON REQUEST



ROAD CLASSIFICATION

Primary highway, hard surface	Light-duty road, hard or improved surface
Secondary highway, hard surface	Unimproved road
Interstate Route	U. S. Route
	State Route

USGS
Historical File
Topographic Division

FLORENCE, MISS.
N3207.5-W9007.5/7.5
1980

DMA 2948 II NW-SERIES V943

SEP 30 1980

2000