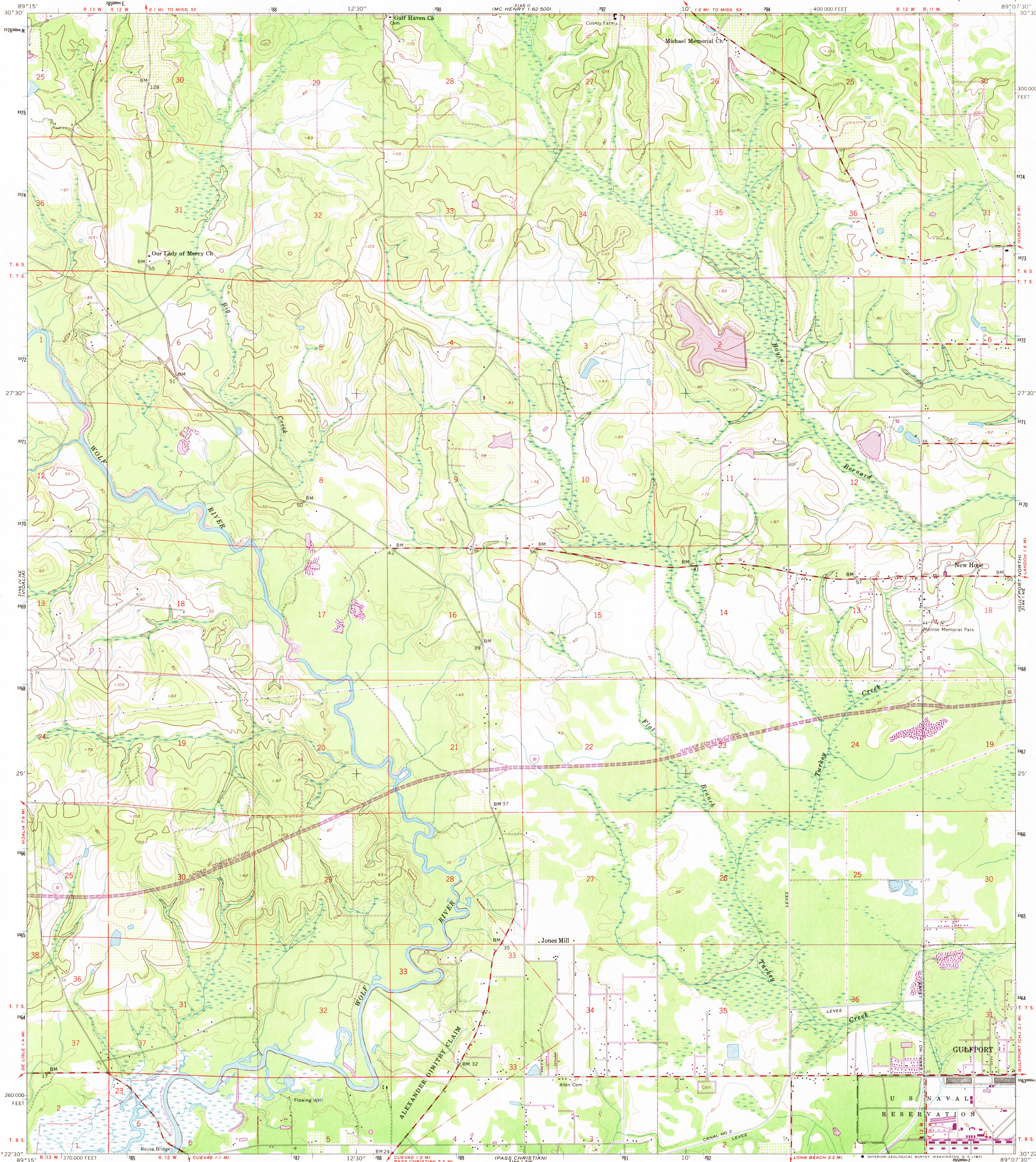


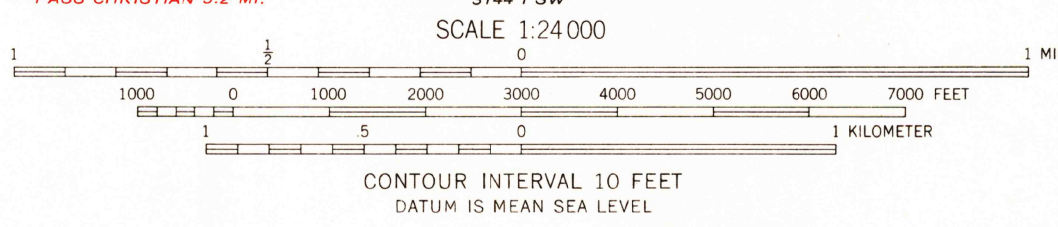
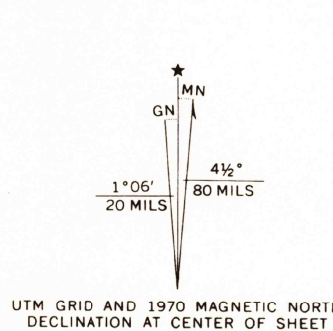
UNITED STATES
DEPARTMENT OF THE INTERIOR
GEOLOGICAL SURVEY

UNITED STATES
DEPARTMENT OF COMMERCE
COAST AND GEODETIC SURVEY

GULFPORT NW QUADRANGLE
MISSISSIPPI—HARRISON CO.
7.5 MINUTE SERIES (TOPOGRAPHIC)



Maped by U. S. Coast and Geodetic Survey
Edited and published by the Geological Survey
Control by USC&GS
Topography from aerial photographs by photogrammetric methods
Aerial photographs taken 1952. Field check 1956
Polyconic projection. 1927 North American datum
10,000-foot grid based on Mississippi coordinate system, east zone
1000-meter Universal Transverse Mercator grid ticks,
zone 16, shown in blue
Dashed land lines indicate approximate locations
Unchecked elevations are shown in brown
Revisions shown in purple compiled by the Geological Survey from
aerial photographs taken 1970. This information not field checked



THIS MAP COMPLIES WITH NATIONAL MAP ACCURACY STANDARDS
FOR SALE BY U. S. GEOLOGICAL SURVEY, WASHINGTON, D. C. 20242
A FOLDER DESCRIBING TOPOGRAPHIC MAPS AND SYMBOLS IS AVAILABLE ON REQUEST



USGS
Historical Files
Topographic Division

U.S.G.S.
FILE COPY
TOPOGRAPHIC DIVISION

ROAD CLASSIFICATION
Medium-duty ——— Light-duty ———
Unimproved dirt ———
Interstate Route

GULFPORT NW, MISS.
N3022.5—W8907.5/7.5
1956
PHOTOREVISED 1970
AMS 3144 1 NW—SERIES V843