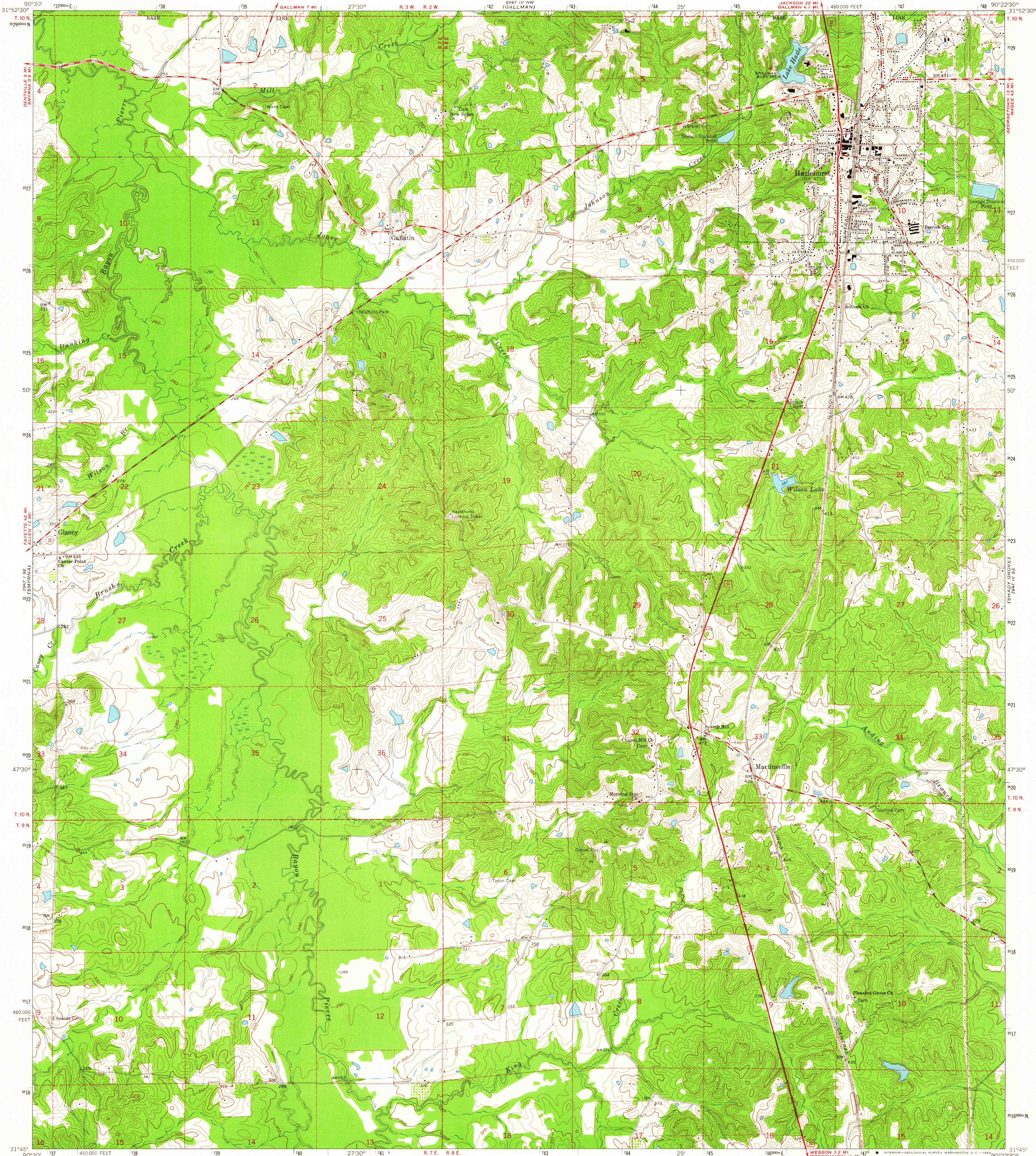


31°52'30" N  
T. 10 N.  
3079000 N

UNITED STATES  
DEPARTMENT OF THE INTERIOR  
GEOLOGICAL SURVEY

HAZLEHURST QUADRANGLE  
MISSISSIPPI—COPIAH CO.  
7.5 MINUTE SERIES (TOPOGRAPHIC)

31°52'30" N  
T. 10 N.  
3079000 N



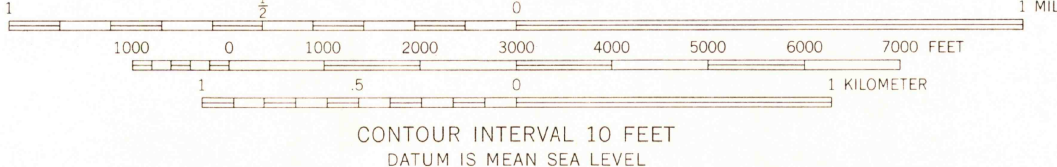
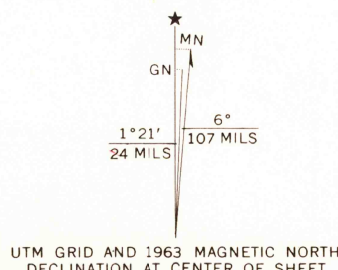
Mapped, edited, and published by the Geological Survey

Control by USGS and USC&GS

Topography by photogrammetric methods from aerial photographs taken 1958. Field checked 1963

Polyconic projection. 1927 North American datum  
10,000-foot grid based on Mississippi coordinate system, west zone  
1000-meter Universal Transverse Mercator grid ticks, zone 15, shown in blue

Fine red dashed lines indicate selected fence and field lines where generally visible on aerial photographs. This information is unchecked



USGS  
Historical File  
Topographic Division



QUADRANGLE LOCATION

ROAD CLASSIFICATION	
Heavy-duty	Light-duty
Medium-duty	Unimproved dirt
U.S. Route	State Route

USGS  
FILE COPY  
TOPOGRAPHIC DIVISION

HAZLEHURST, MISS.  
N3145—W9022.5/7.5

1963

JUN 16 1964

AMS 2947 IV SW—SERIES V843

THIS MAP COMPLIES WITH NATIONAL MAP ACCURACY STANDARDS  
FOR SALE BY U. S. GEOLOGICAL SURVEY, WASHINGTON 25, D. C.  
A FOLDER DESCRIBING TOPOGRAPHIC MAPS AND SYMBOLS IS AVAILABLE ON REQUEST

2195