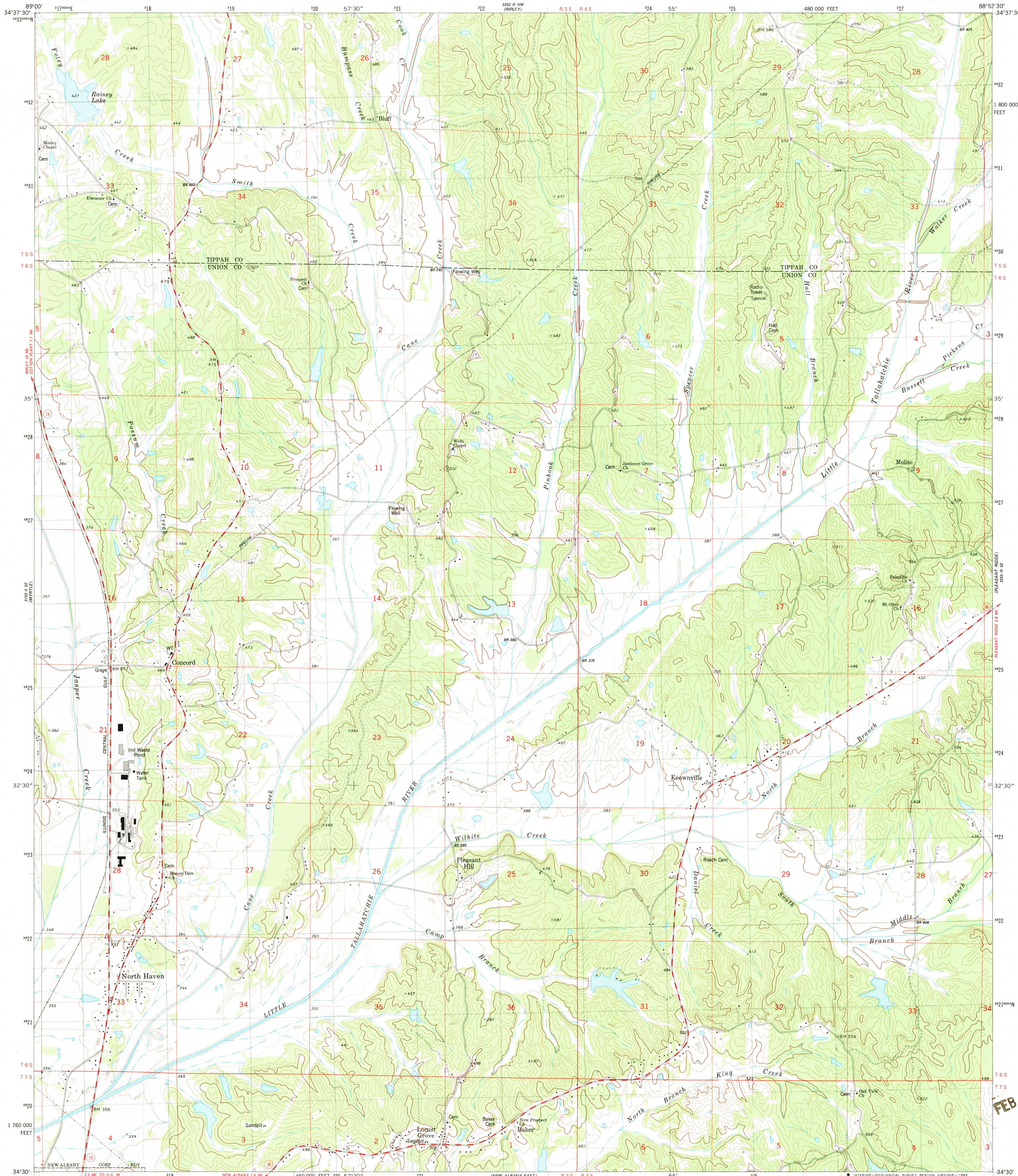
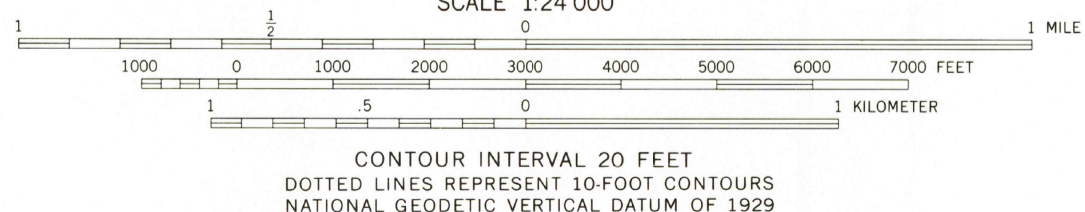
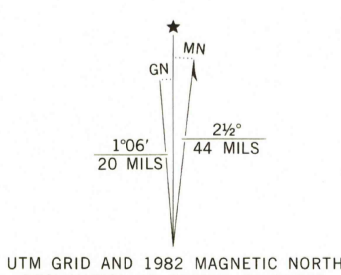


UNITED STATES  
DEPARTMENT OF THE INTERIOR  
GEOLOGICAL SURVEY

KEOWNVILLE QUADRANGLE  
MISSISSIPPI  
7.5 MINUTE SERIES (TOPOGRAPHIC)  
SW/4 RIPLEY 15' QUADRANGLE



Mapped, edited, and published by the Geological Survey  
Control by USGS and NOS/NOAA  
Topography by photogrammetric methods from aerial photographs  
taken 1975. Field checked 1978. Map edited 1982  
Projection and 10,000-foot grid ticks: Mississippi coordinate  
system, east zone (transverse Mercator)  
1000-meter Universal Transverse Mercator grid, zone 16  
1927 North American Datum  
To place on the predicted North American Datum 1983  
move the projection lines 8 meters south and  
5 meters east as shown by dashed corner ticks  
Fine red dashed lines indicate selected fence and field lines where  
generally visible on aerial photographs. This information is unchecked



THIS MAP COMPLIES WITH NATIONAL MAP ACCURACY STANDARDS  
FOR SALE BY U.S. GEOLOGICAL SURVEY, RESTON, VIRGINIA 22092  
A FOLDER DESCRIBING TOPOGRAPHIC MAPS AND SYMBOLS IS AVAILABLE ON REQUEST



QUADRANGLE LOCATION

ROAD CLASSIFICATION  
Primary highway, hard surface  
Secondary highway, hard surface  
Unimproved road  
Light duty road, hard or improved surface  
Interstate Route  
U. S. Route  
State Route

KEOWNVILLE, MISS.  
SW/4 RIPLEY 15' QUADRANGLE  
N3430-W8852.5/7.5

1982

DMA 3253 III SW-SERIES V843

RETURN TO:  
USGS M&D HISTORICAL MAP ARCHIVES

FEB 03 1984