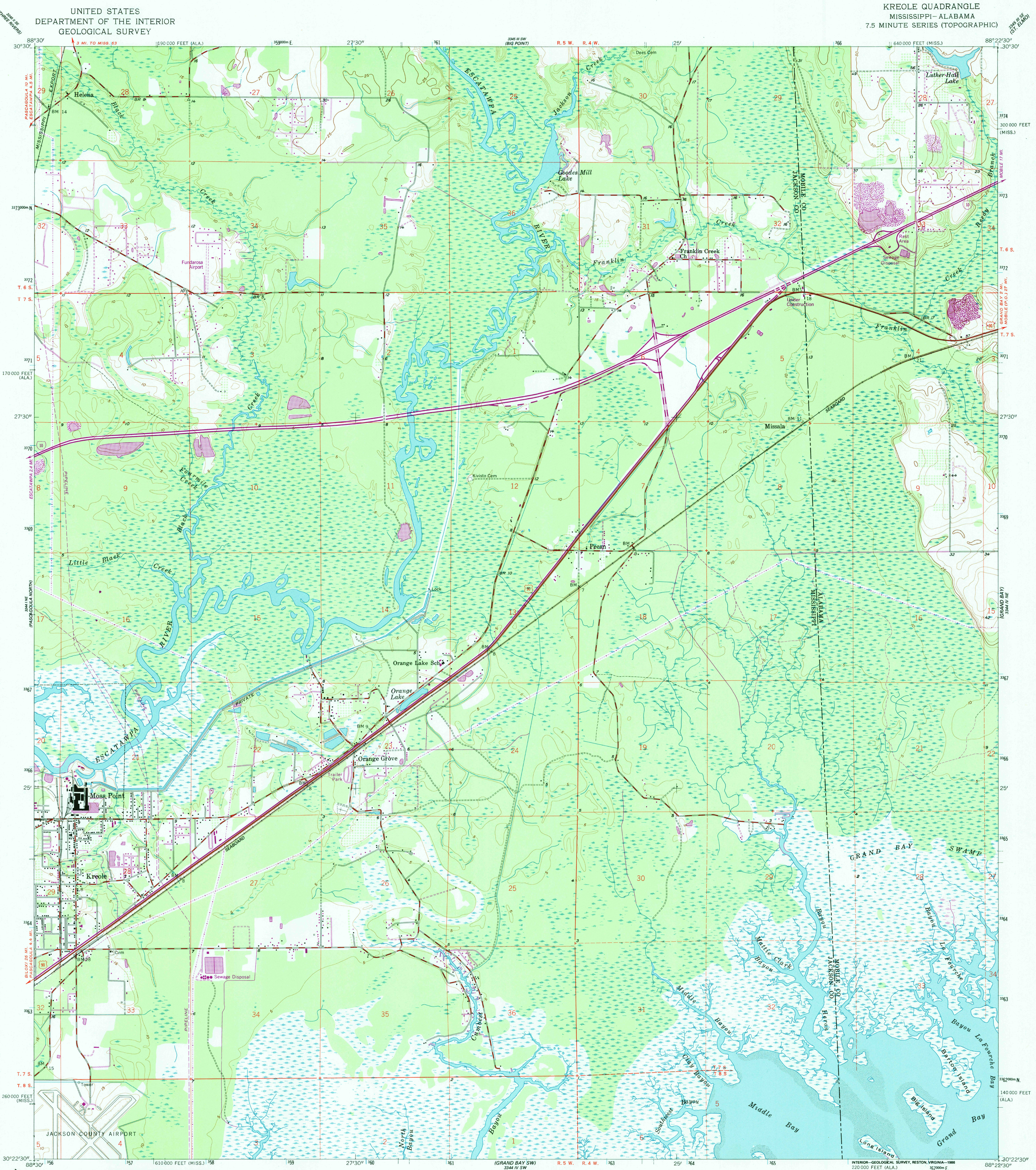


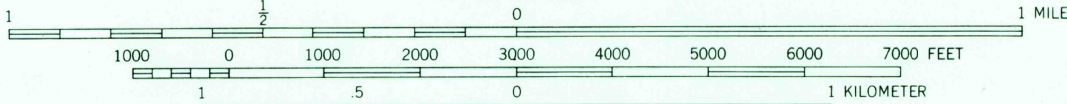
UNITED STATES
DEPARTMENT OF THE INTERIOR
GEOLOGICAL SURVEY

KREOLE QUADRANGLE
MISSISSIPPI-ALABAMA
7.5 MINUTE SERIES (TOPOGRAPHIC)



Mapped, edited, and published by the Geological Survey
Control by USGS and NOS/NOAA
Culture and drainage in part compiled from aerial photographs taken 1952. Topography by planetable surveys 1958
Selected hydrographic data compiled from NOS chart 874 (1957)
This information is not intended for navigational purposes
Polyconic projection. 10,000-foot grid ticks based on Mississippi coordinate system, east zone, and Alabama coordinate system, west zone
1000-meter Universal Transverse Mercator grid ticks, zone 16, shown in blue
1927 North American Datum
To place on the predicted North American Datum 1983 move the projection lines 18 meters south and 2 meters east as shown by dashed corner ticks
Dashed land lines indicate approximate locations

Revisions shown in purple and woodland compiled from aerial photographs taken 1980 and other sources. This information not field checked. Map edited 1986

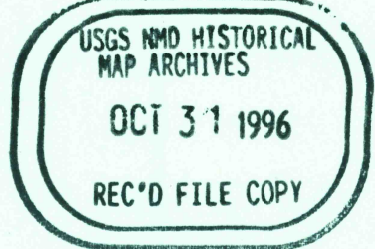


CONTOUR INTERVAL 5 FEET
NATIONAL GEODETIC VERTICAL DATUM OF 1929
SHORELINE SHOWN REPRESENTS THE APPROXIMATE LINE OF MEAN HIGH WATER
THE MEAN RANGE OF TIDE IS APPROXIMATELY 2 FEET

THIS MAP COMPLIES WITH NATIONAL MAP ACCURACY STANDARDS
FOR SALE BY U. S. GEOLOGICAL SURVEY, RESTON, VIRGINIA 22092
A FOLDER DESCRIBING TOPOGRAPHIC MAPS AND SYMBOLS IS AVAILABLE ON REQUEST



ROAD CLASSIFICATION
Heavy-duty ——— Light-duty ———
Medium-duty ——— Unimproved dirt ———
U.S. Route ——— State Route ———
Interstate Route ———



KREOLE, MISS. - ALA.
30088-04-TF-024

1958
PHOTOREVISED 1986
DMA 3344 IV NW-SERIES V843

