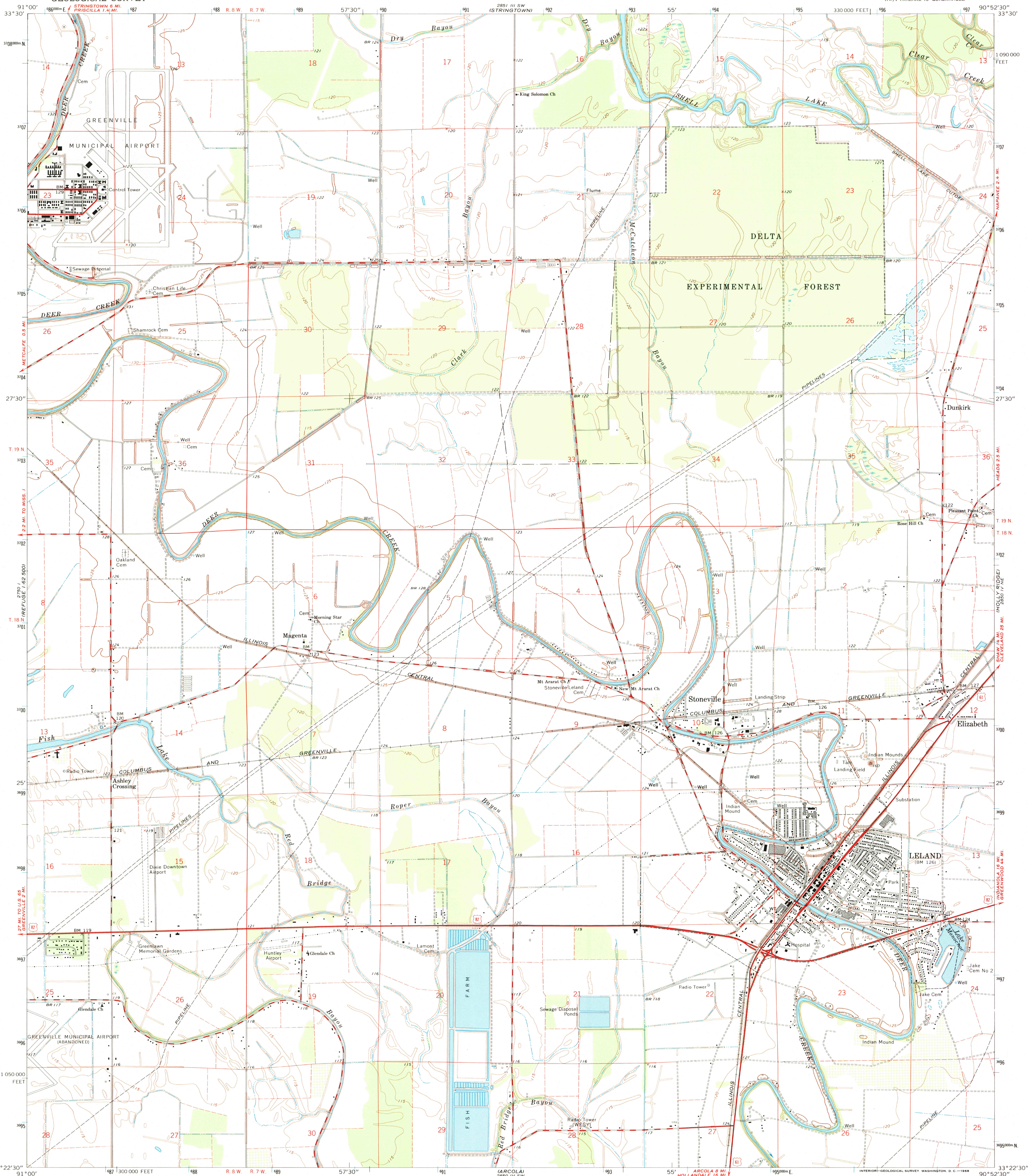
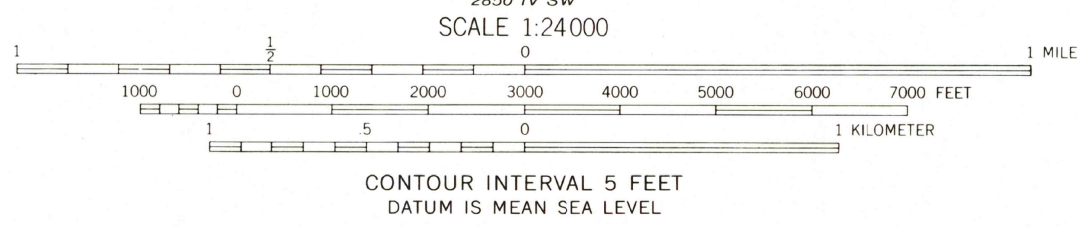
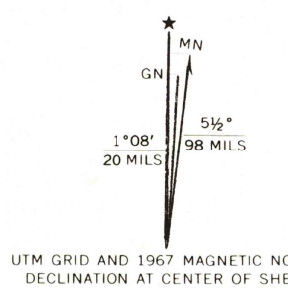


UNITED STATES
DEPARTMENT OF THE INTERIOR
GEOLOGICAL SURVEY

LELAND QUADRANGLE
MISSISSIPPI—WASHINGTON CO.
7.5 MINUTE SERIES (TOPOGRAPHIC)
NW 1/4 TRALAKE 15' QUADRANGLE



Mapped, edited, and published by the Geological Survey
Control by USGS, USC&GS, and USCE
Planimetry by photogrammetric methods from aerial photographs
taken 1966. Topography by planetable surveys 1967
Polyconic projection. 1927 North American datum
10,000-foot grid based on Mississippi coordinate system, west zone
1000-meter Universal Transverse Mercator grid ticks,
zone 15, shown in blue
Fine red dashed lines indicate selected fence and field lines where
generally visible on aerial photographs. This information is unchecked



ROAD CLASSIFICATION
Heavy-duty ——— Light-duty ———
Medium-duty ——— Unimproved dirt ———
U.S. Route

LELAND, MISS.
NW 1/4 TRALAKE 15' QUADRANGLE
N3322.5—W9052.5/7.5

1967

AMS 2850 IV NW—SERIES V843

THIS MAP COMPLIES WITH NATIONAL MAP ACCURACY STANDARDS
FOR SALE BY U.S. GEOLOGICAL SURVEY, WASHINGTON, D.C. 20542
A FOLDER DESCRIBING TOPOGRAPHIC MAPS AND SYMBOLS IS AVAILABLE ON REQUEST

