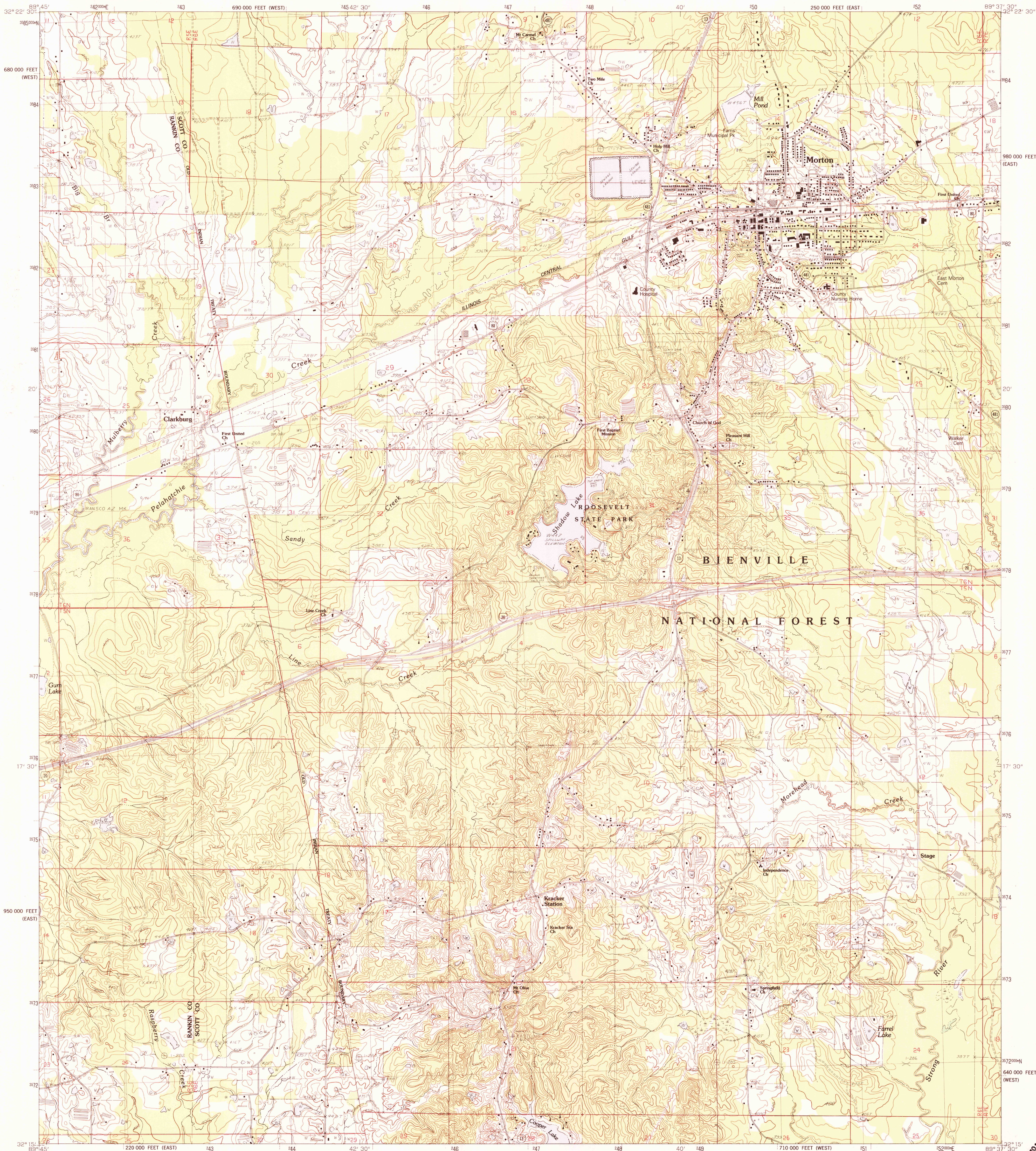


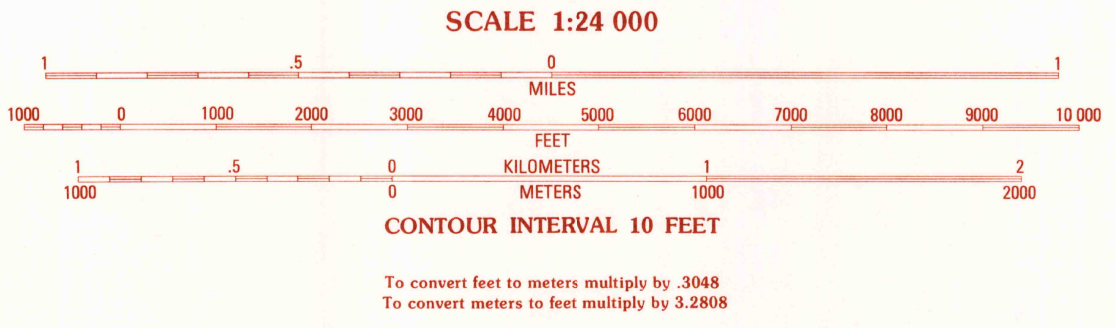
UNITED STATES
DEPARTMENT OF THE INTERIOR
GEOLOGICAL SURVEY

MORTON QUADRANGLE
MISSISSIPPI
7.5 MINUTE SERIES (TOPOGRAPHIC)



PRODUCED BY THE UNITED STATES GEOLOGICAL SURVEY
CONTROL BY: USGS AND NOS/NOAA
COMPILED FROM AERIAL PHOTOGRAPHS TAKEN: 1976
FIELD CHECKED: 1981. MAP EDITED: 1982
PROJECTION: TRANSVERSE MERCATOR
GRID: 1000-METER UNIVERSAL TRANSVERSE MERCATOR ZONE 16
10,000-FOOT STATE GRID TICKS: MISSISSIPPI EAST AND WEST ZONES
UTM GRID DECLINATION: 17°W WEST
1982 MAGNETIC NORTH DECLINATION: 3°10' EAST
VERTICAL DATUM: NATIONAL GEODETIC VERTICAL DATUM OF 1929
HORIZONTAL DATUM: 1927 NORTH AMERICAN DATUM
To place on the predicted North American Datum of 1983
move the projection lines as shown by dashed corner ticks
(13 meters south and 6 meters east)
There may be private inholdings within the boundaries of any
Federal and State reservations shown on this map

PROVISIONAL MAP
Produced from original
manuscript drawings. Information
shown as of date of
field check.



THIS MAP COMPLIES WITH NATIONAL MAP ACCURACY STANDARDS
FOR SALE BY U.S. GEOLOGICAL SURVEY, RESTON, VIRGINIA 22092

1	2	3	1 Leesburg
4	5	4 Hillsboro	5 Pelahatchie
6	7	6 Pulaski	7 Johns
		8 Homeville	9 Homeville

ADJOINING 7.5' QUADRANGLE NAMES

ROAD LEGEND
Improved Road: solid line
Unimproved Road: dashed line
Trail: dotted line
Interstate Route: shield with 'I'
U.S. Route: shield with 'U.S.'
State Route: shield with 'S'

MORTON, MISSISSIPPI
PROVISIONAL EDITION 1982
32089-C6-TF-024

RETURN TO:
MISS AND HISTORICAL MAP ARCHIVES
JUL 15 1989