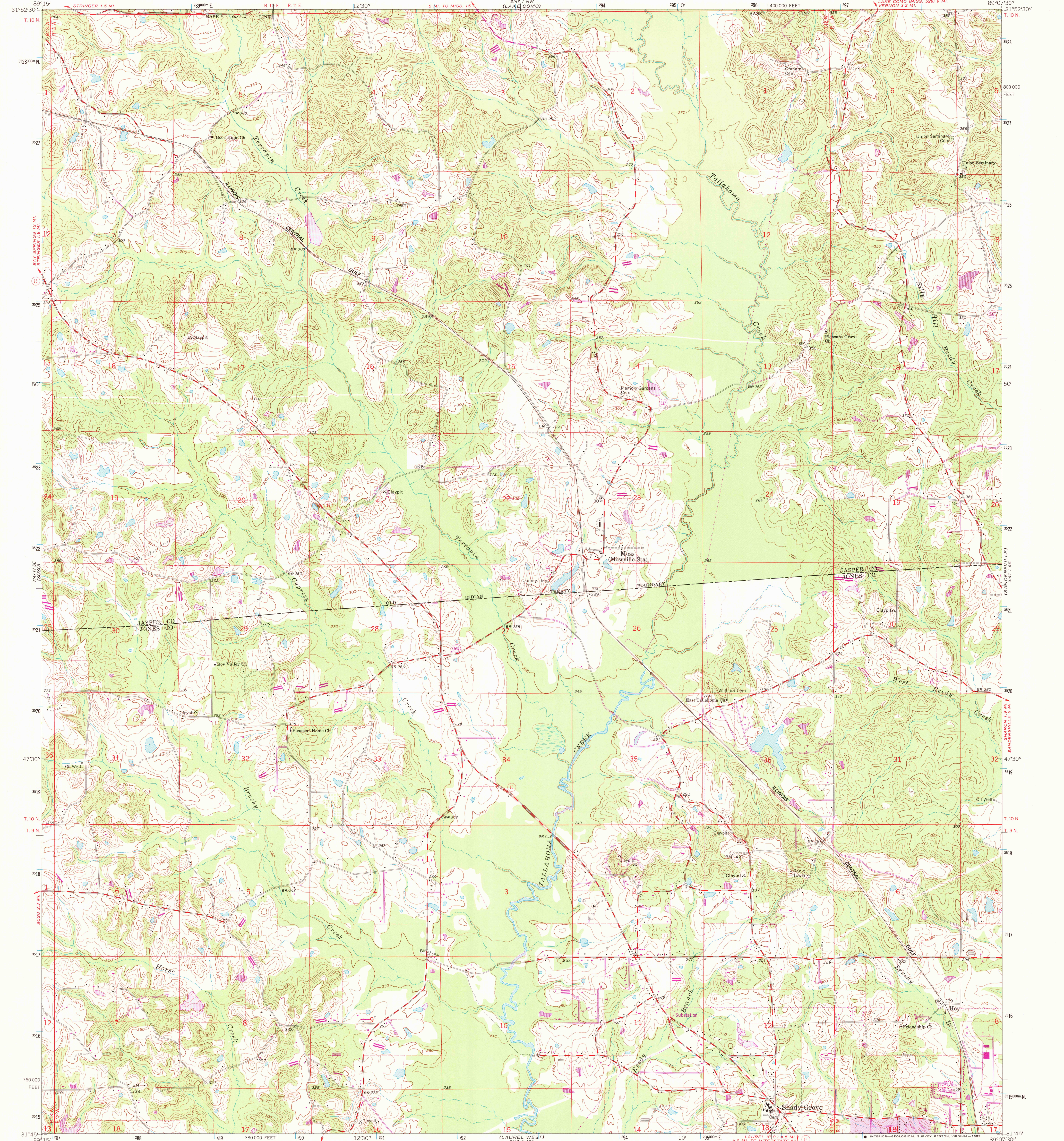


(Hazard)
5/27/1982

UNITED STATES
DEPARTMENT OF THE INTERIOR
GEOLOGICAL SURVEY

MOSS QUADRANGLE
MISSISSIPPI
7.5 MINUTE SERIES (TOPOGRAPHIC)

(Hazard)
5/27/1982



(Hazard)
5/27/1982

Mapped, edited, and published by the Geological Survey

Control by USGS and USC&GS

Topography by photogrammetric methods from aerial photographs taken 1960. Field checked 1964

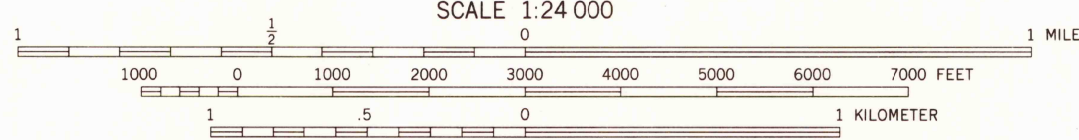
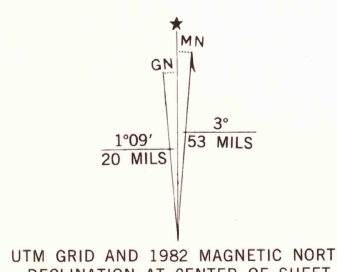
Polyconic projection. 1927 North American datum
10,000-foot grid based on Mississippi coordinate system, east zone
1000-meter Universal Transverse Mercator grid ticks, zone 16, shown in blue

Fine red dashed lines indicate selected fence and field lines where generally visible on aerial photographs. This information is unchecked

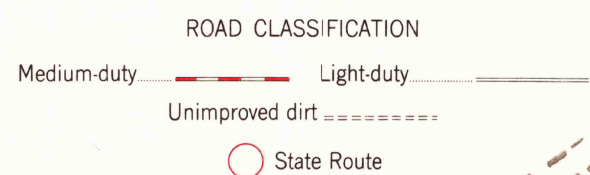
To place on the predicted North American Datum 1983
move the projection lines 14 meters south and
5 meters east as shown by dashed corner ticks

Revisions shown in purple compiled from aerial photographs taken 1980
and other sources. This information not field checked. Map edited 1982

Purple tint indicates urban area



THIS MAP COMPLIES WITH NATIONAL MAP ACCURACY STANDARDS
FOR SALE BY U. S. GEOLOGICAL SURVEY, RESTON, VIRGINIA 22092
A FOLDER DESCRIBING TOPOGRAPHIC MAPS AND SYMBOLS IS AVAILABLE ON REQUEST



MOSS, MISS.
N3145—W8907.5/7.5

RETURN TO:
USGS AND HISTORICAL MAP ARCHIVES

1964
PHOTOREVISED 1982
DMA 3147 1 SW—SERIES V843

MAR 19 1983

2252