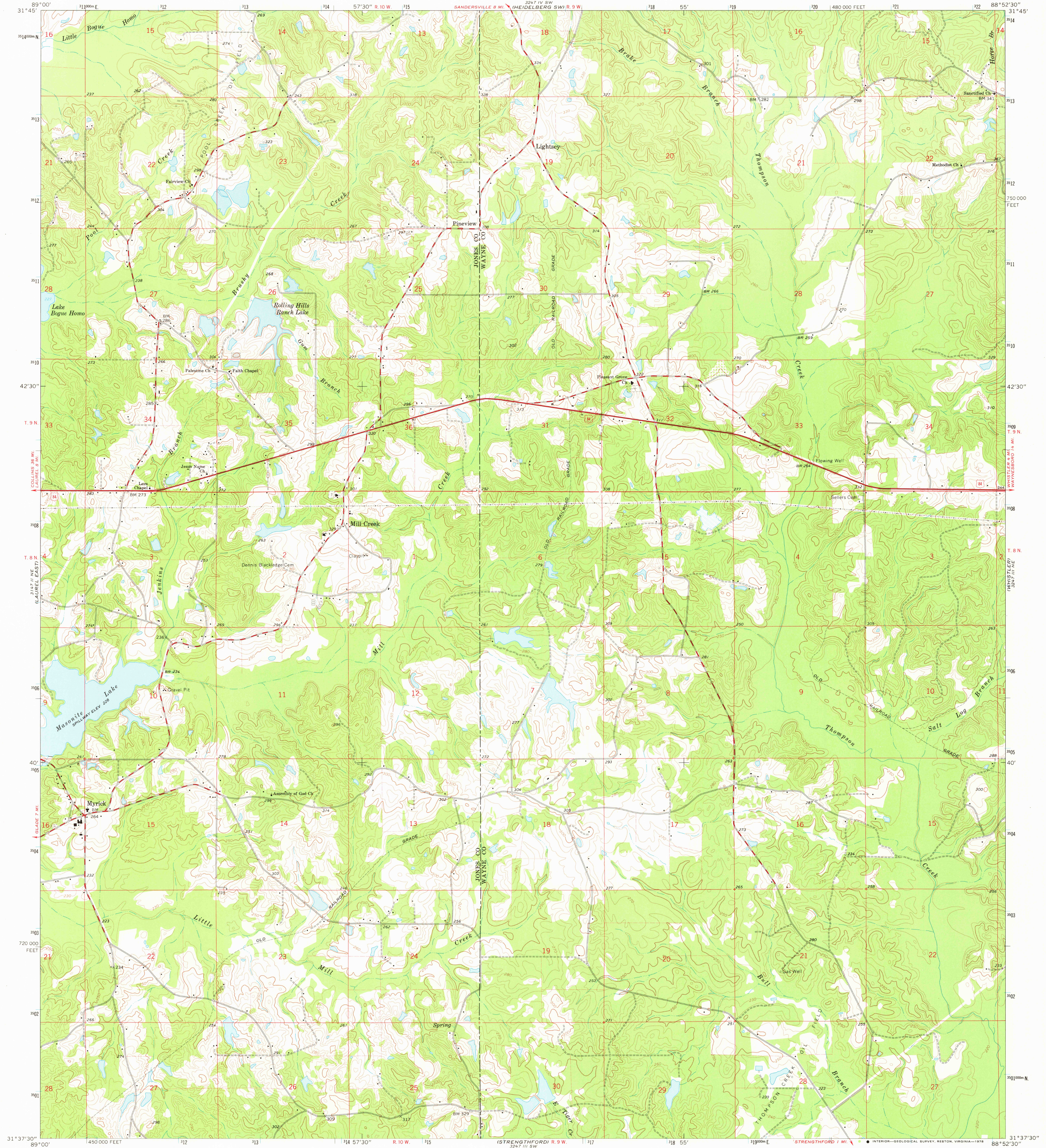


SANDERSVILLE

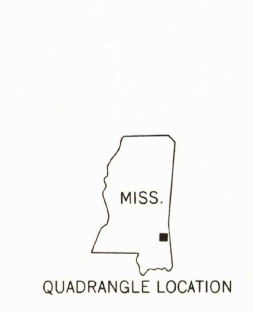
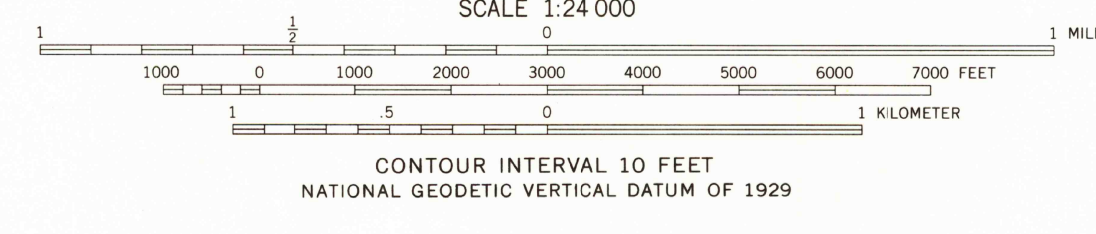
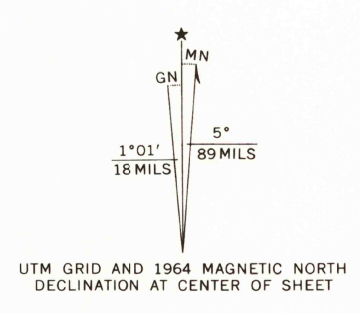
UNITED STATES
DEPARTMENT OF THE INTERIOR
GEOLOGICAL SURVEY

MYRICK QUADRANGLE
MISSISSIPPI
7.5 MINUTE SERIES (TOPOGRAPHIC)

227 IV SE
(EUCUTTA)



Maped, edited, and published by the Geological Survey
Control by USGS and USC&GS
Topography by photogrammetric methods from aerial
photographs taken 1960. Field checked 1964.
Polyconic projection. 1927 North American datum
10,000-foot grid based on Mississippi coordinate system, east zone
1000-meter Universal Transverse Mercator grid ticks,
zone 16, shown in blue
Fine red dashed lines indicate selected fence and field lines where
generally visible on aerial photographs. This information is unchecked
Map photoinspected 1973
No major culture or drainage changes observed



ROAD CLASSIFICATION
Heavy-duty ——— Light-duty ———
Medium-duty ——— Unimproved dirt ———
U. S. Route

USGS
Historical File
Topographic Division

MYRICK, MISS.
N3137.5—W8852.5/7.5
1964
PHOTOINSPECTED 1973
AMS 3247 III NW—SERIES V843

MAR 24 1978

1200