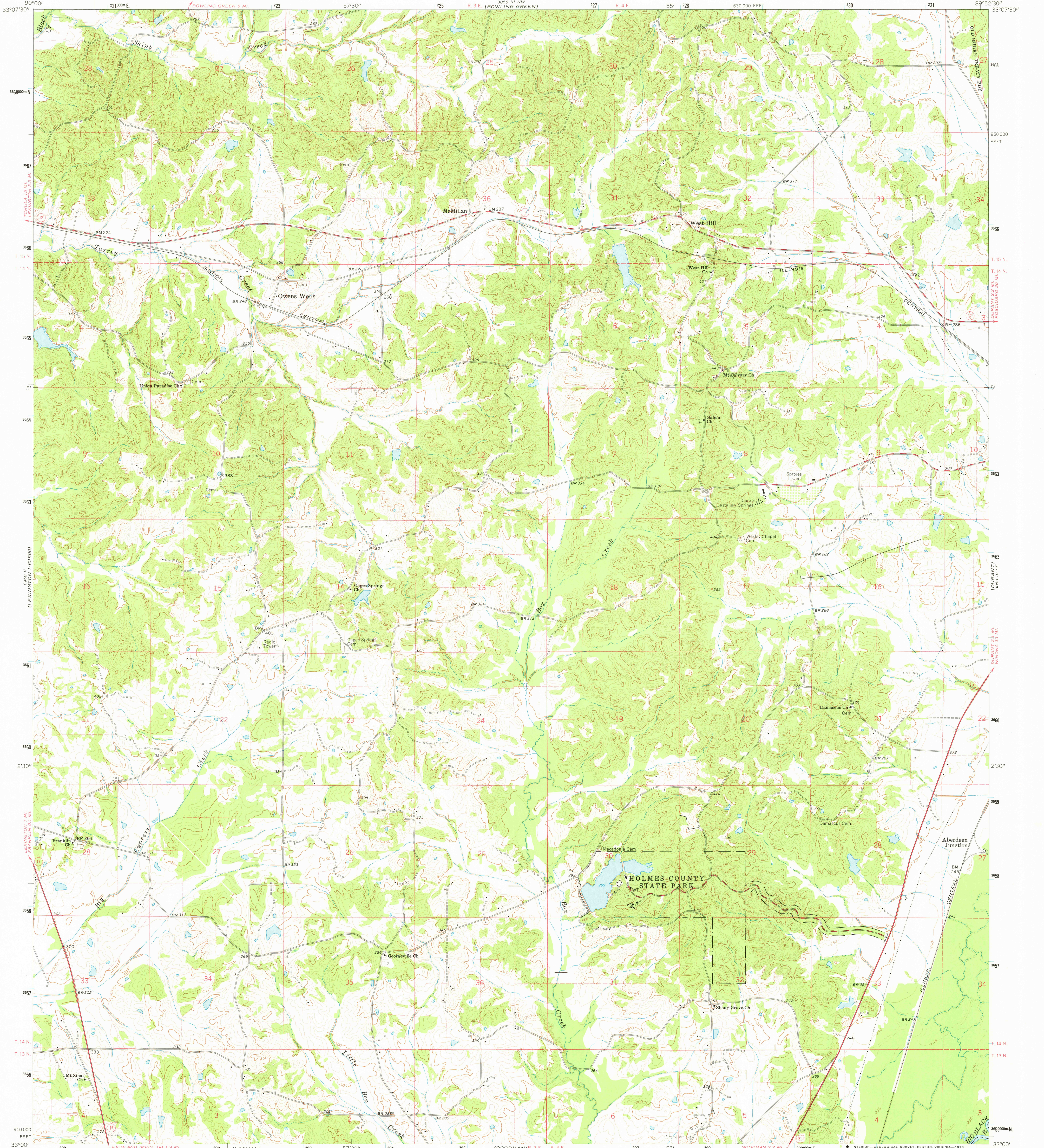


33°07'30" N
90°00' W
LEXINGTON 1.9 MI
FRANKLIN 3.3 MI

UNITED STATES
DEPARTMENT OF THE INTERIOR
GEOLOGICAL SURVEY

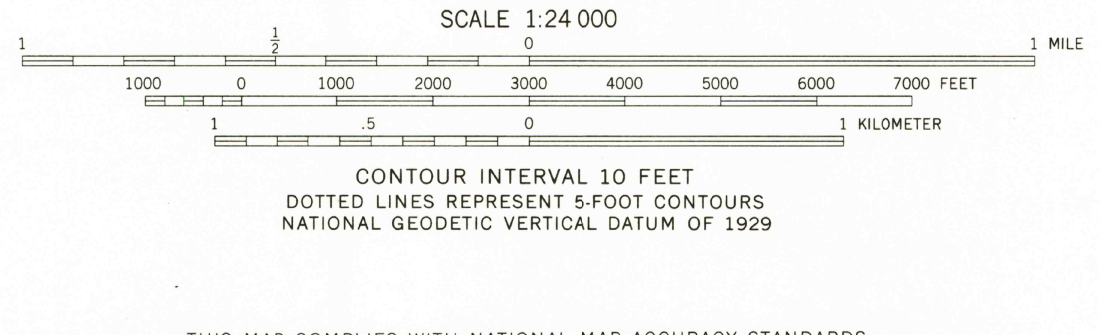
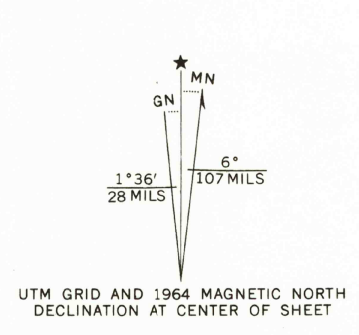
OWENS WELLS QUADRANGLE
MISSISSIPPI-HOLMES CO.
7.5 MINUTE SERIES (TOPOGRAPHIC)

33°07'30" N
89°52'30" W
NEWPORT 1.9 MI
WINONA 3.1 MI



33°07'30" N
90°00' W
LEXINGTON 1.9 MI
FRANKLIN 3.3 MI

Mapped, edited, and published by the Geological Survey
Control by USGS and USC&GS
Topography by photogrammetric methods from aerial
photographs taken 1960 and planetable surveys 1964
Polyconic projection. 1927 North American datum
10,000-foot grid based on Mississippi coordinate system, west zone
1000-meter Universal Transverse Mercator grid ticks,
zone 16, shown in blue
Fine red dashed lines indicate selected fence and field lines where
generally visible on aerial photographs. This information is unchecked



ROAD CLASSIFICATION
Heavy-duty ——— Light-duty ———
Medium-duty ——— Unimproved dirt ———
U. S. Route ——— State Route ———

OWENS WELLS, MISS.
N3300—W8952.5/7.5

USGS
Historical File
Topographic Division

1964
AMS 3050 III SW—SERIES V843

33°07'30" N
89°52'30" W
NEWPORT 1.9 MI
WINONA 3.1 MI