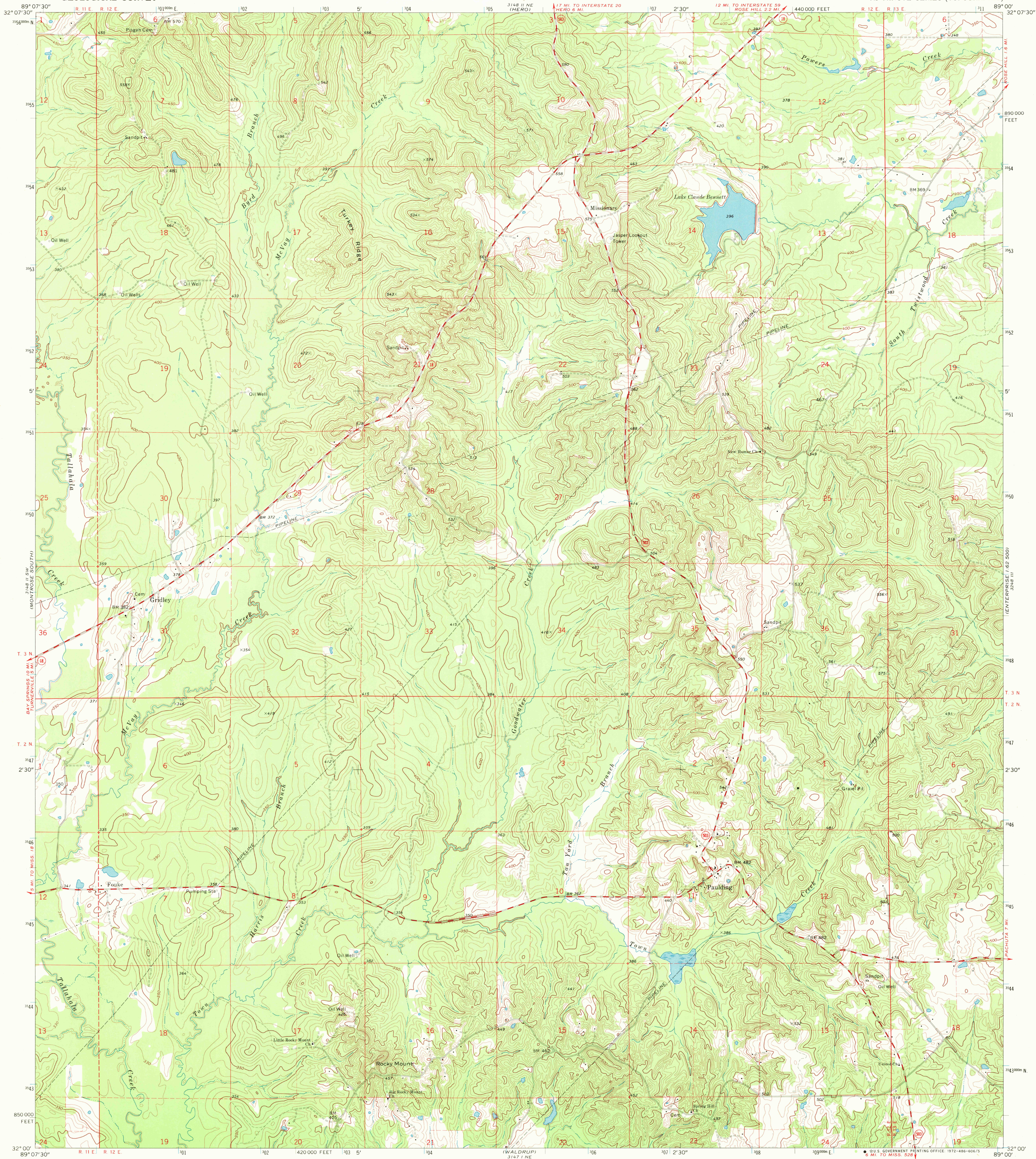


3148 II NW  
ENTERPRISE NORTH

3148 III NE  
ENTERPRISE 1 62 50

UNITED STATES  
DEPARTMENT OF THE INTERIOR  
GEOLOGICAL SURVEY

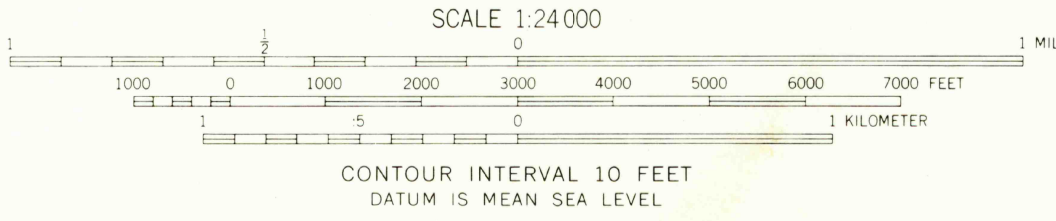
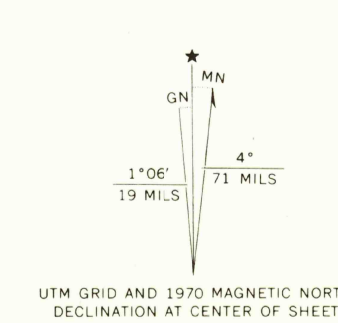
PAULDING QUADRANGLE  
MISSISSIPPI—JASPER CO.  
7.5 MINUTE SERIES (TOPOGRAPHIC)



3148 I NW  
LAKE HOW

3148 IV NE  
HEDBERG

Mapped, edited, and published by the Geological Survey  
Control by USGS and USC&GS  
Topography by photogrammetric methods from aerial  
photographs taken 1968. Field checked 1970  
Polyconic projection. 1927 North American datum  
10,000-foot grid based on Mississippi coordinate system, east zone  
1000-meter Universal Transverse Mercator grid ticks,  
zone 16, shown in blue  
Fine red dashed lines indicate selected fence and field lines where  
generally visible on aerial photographs. This information is unchecked



ROAD CLASSIFICATION  
Secondary highway, all weather, hard surface  
Light-duty road, all weather, improved surface  
Unimproved road, fair or dry weather  
State Route

THIS MAP COMPLIES WITH NATIONAL MAP ACCURACY STANDARDS  
FOR SALE BY U.S. GEOLOGICAL SURVEY, WASHINGTON, D. C. 20242  
A FOLDER DESCRIBING TOPOGRAPHIC MAPS AND SYMBOLS IS AVAILABLE ON REQUEST

USGS  
HISTORICAL FILE  
TOPOGRAPHIC DIVISION

PAULDING, MISS.  
N3200—W8900/7.5

1970

AMS 3148 II SE—SERIES V843

JUN 12 1972  
W.H.  
2000