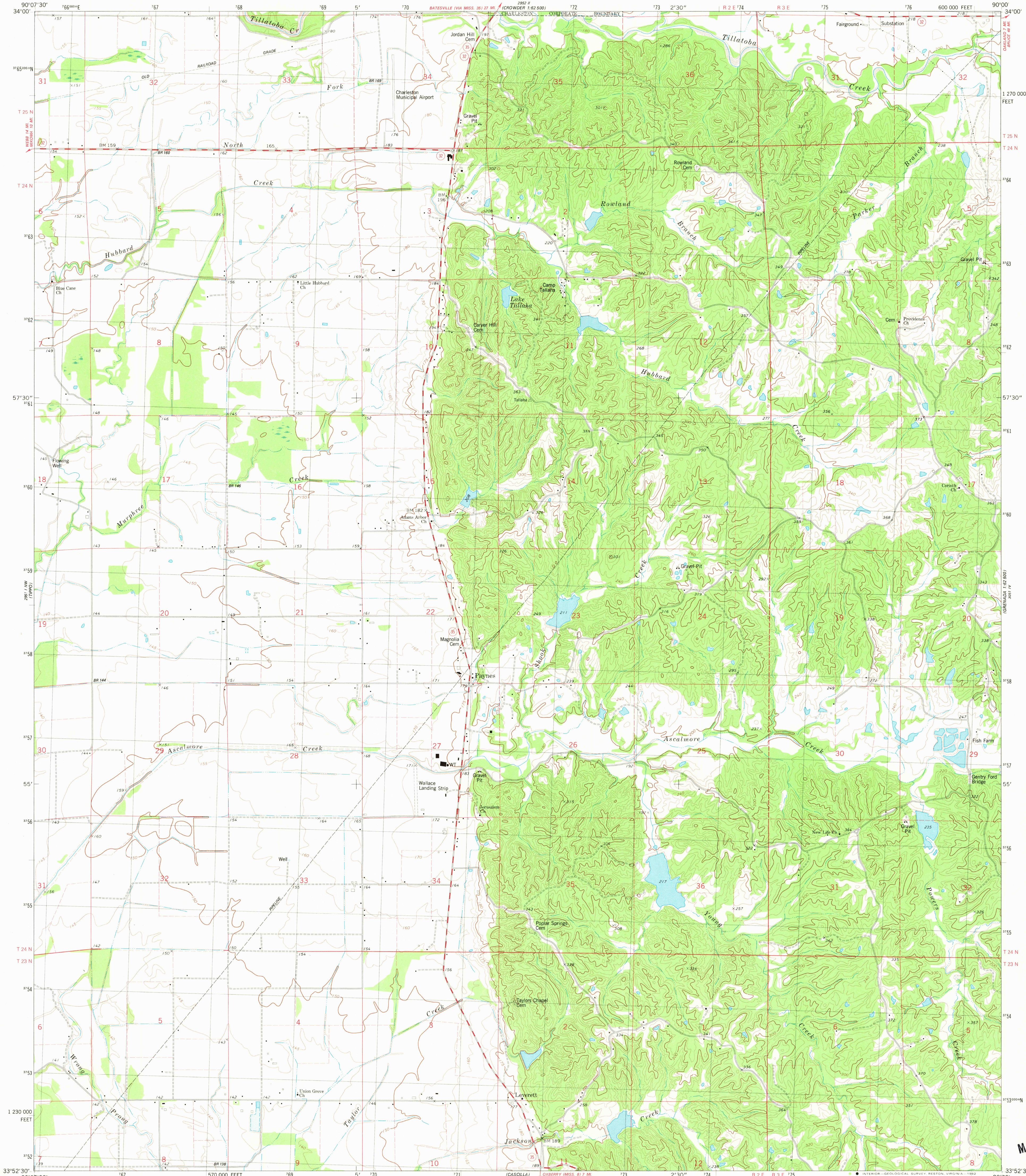


UNITED STATES
DEPARTMENT OF THE INTERIOR
GEOLOGICAL SURVEY

PAYNES QUADRANGLE
MISSISSIPPI-TALLAHATCHIE CO.
7.5 MINUTE SERIES (TOPOGRAPHIC)
NE 1/4 PHILIPP 15' QUADRANGLE



Mapped, edited, and published by the Geological Survey

Control by USGS and NOS/NOAA

Topography by photogrammetric methods from aerial photographs taken 1977. Field checked 1978. Map edited 1981

Projection and 10,000-foot grid ticks: Mississippi coordinate system, west zone (transverse Mercator)

1000-meter Universal Transverse Mercator grid, zone 15

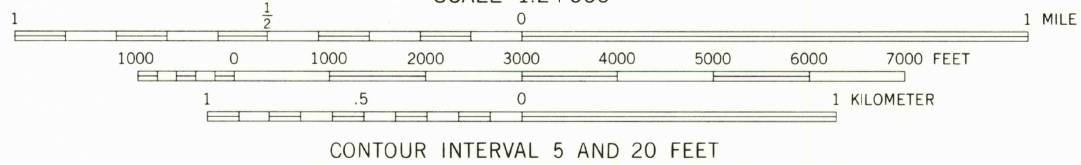
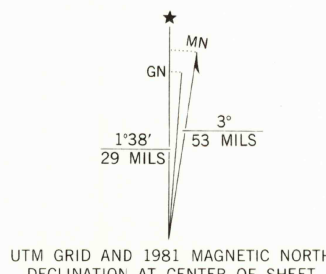
1927 North American Datum

To place on the predicted North American Datum 1983

move the projection lines 10 meters south and

8 meters east as shown by dashed corner ticks

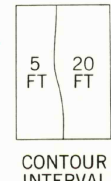
Fine red dashed lines indicate selected fence and field lines where generally visible on aerial photographs. This information is unchecked



CONTOUR INTERVAL 5 AND 20 FEET

NATIONAL GEODETIC VERTICAL DATUM OF 1929

THIS MAP COMPLIES WITH NATIONAL MAP ACCURACY STANDARDS
FOR SALE BY U. S. GEOLOGICAL SURVEY, RESTON, VIRGINIA 22092
A FOLDER DESCRIBING TOPOGRAPHIC MAPS AND SYMBOLS IS AVAILABLE ON REQUEST



ROAD CLASSIFICATION	
Primary highway, hard surface	Light-duty road, hard or improved surface
Secondary highway, hard surface	Unimproved road
Interstate Route	U. S. Route
	State Route

PAYNES, MISS.
NE 1/4 PHILIPP 15' QUADRANGLE
N3352.5-W90007.5

1981

DNA 2951 1 NE-SERIES V843

RETURN TO:
USGS AND HISTORICAL MAP ARCHIVES

MAR 9 1982