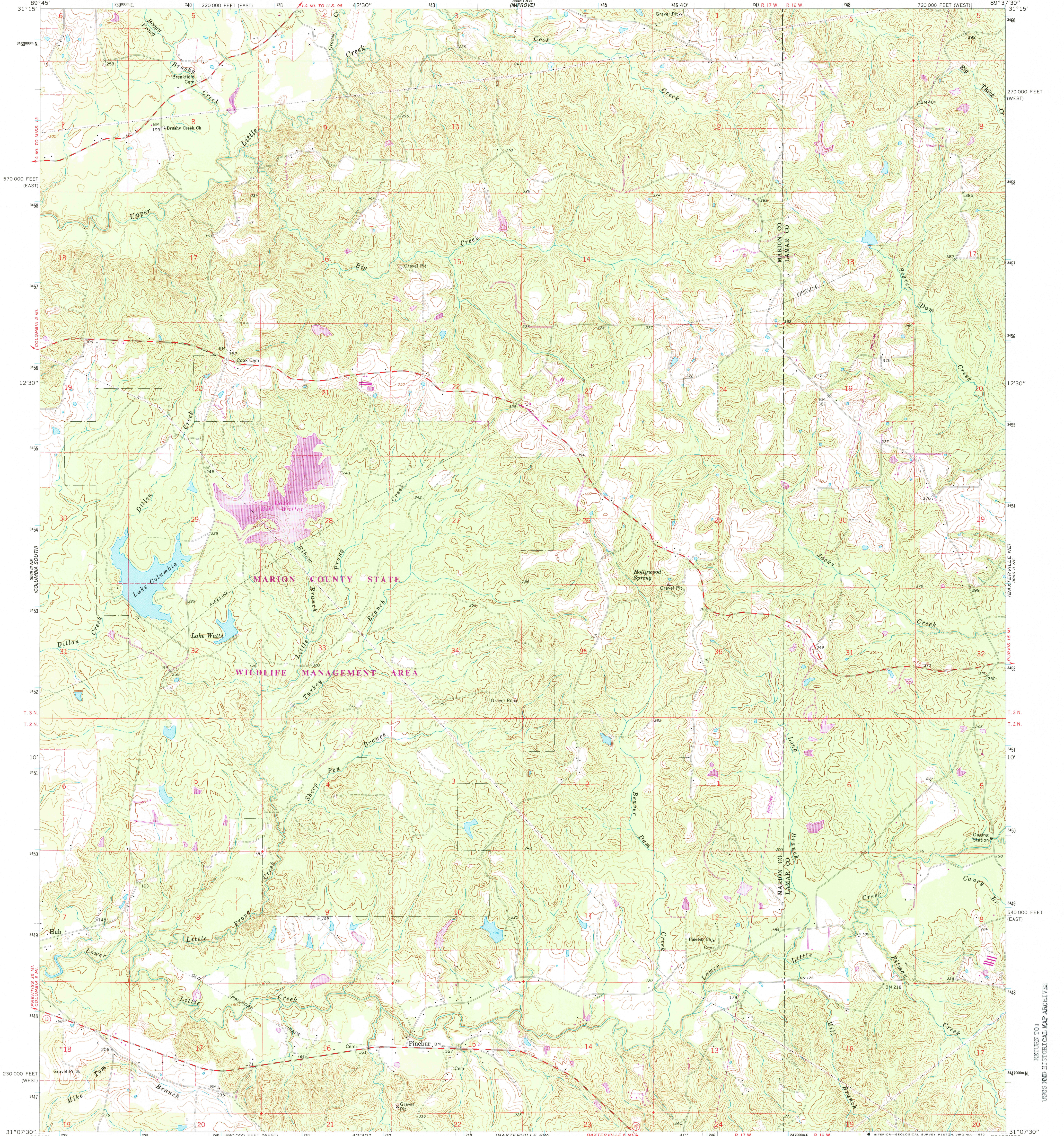


306 000m N  
COLUMBIA NORTH

UNITED STATES  
DEPARTMENT OF THE INTERIOR  
GEOLOGICAL SURVEY

PINEBUR QUADRANGLE  
MISSISSIPPI  
7.5 MINUTE SERIES (TOPOGRAPHIC)

306 000m E  
COLUMBIA



Mapped, edited, and published by the Geological Survey  
Control by USGS and USC&GS  
Topography by photogrammetric methods from aerial photographs taken 1967. Field checked 1969  
Polyconic projection. 1927 North American datum  
10,000-foot grids based on Mississippi coordinate system, west and east zones  
1000-meter Universal Transverse Mercator grid ticks, zone 16, shown in blue  
To place on the predicted North American Datum 1983  
move the projection lines 16 meters south and  
6 meters east as shown by dashed corner ticks  
There may be private inholdings within the boundaries of  
the National or State reservations shown on this map  
Revisions shown in purple compiled from aerial photographs taken 1981  
and other sources. This information not field checked. Map edited 1982

SCALE 1:24,000  
CONTOUR INTERVAL 10 FEET  
NATIONAL GEODETIC VERTICAL DATUM OF 1929

1 1000 0 1000 2000 3000 4000 5000 6000 7000 FEET  
1 5 0 1 KILOMETER

UTM GRID AND 1982 MAGNETIC NORTH  
DECLINATION AT CENTER OF SHEET

1:24" 25 MILS 31 1/2" 62 MILS

THIS MAP COMPLIES WITH NATIONAL MAP ACCURACY STANDARDS  
FOR SALE BY U.S. GEOLOGICAL SURVEY, RESTON, VIRGINIA 22092  
A FOLDER DESCRIBING TOPOGRAPHIC MAPS AND SYMBOLS IS AVAILABLE ON REQUEST

ROAD CLASSIFICATION  
Secondary highway, all weather, Light-duty road, all weather,  
hard surface  
Unimproved road, fair or dry  
weather  
State Route

MISS.  
QUADRANGLE LOCATION

REVISION TO: 1969  
1969  
PHOTOREVISED 1982  
DMA 3046 II NW-SERIES W843

OCT 28 1982  
PINEBUR, MISS.  
N3107.5-W8937.5/7.5

REVISION TO: 1969  
1969  
PHOTOREVISED 1982  
DMA 3046 II NW-SERIES W843