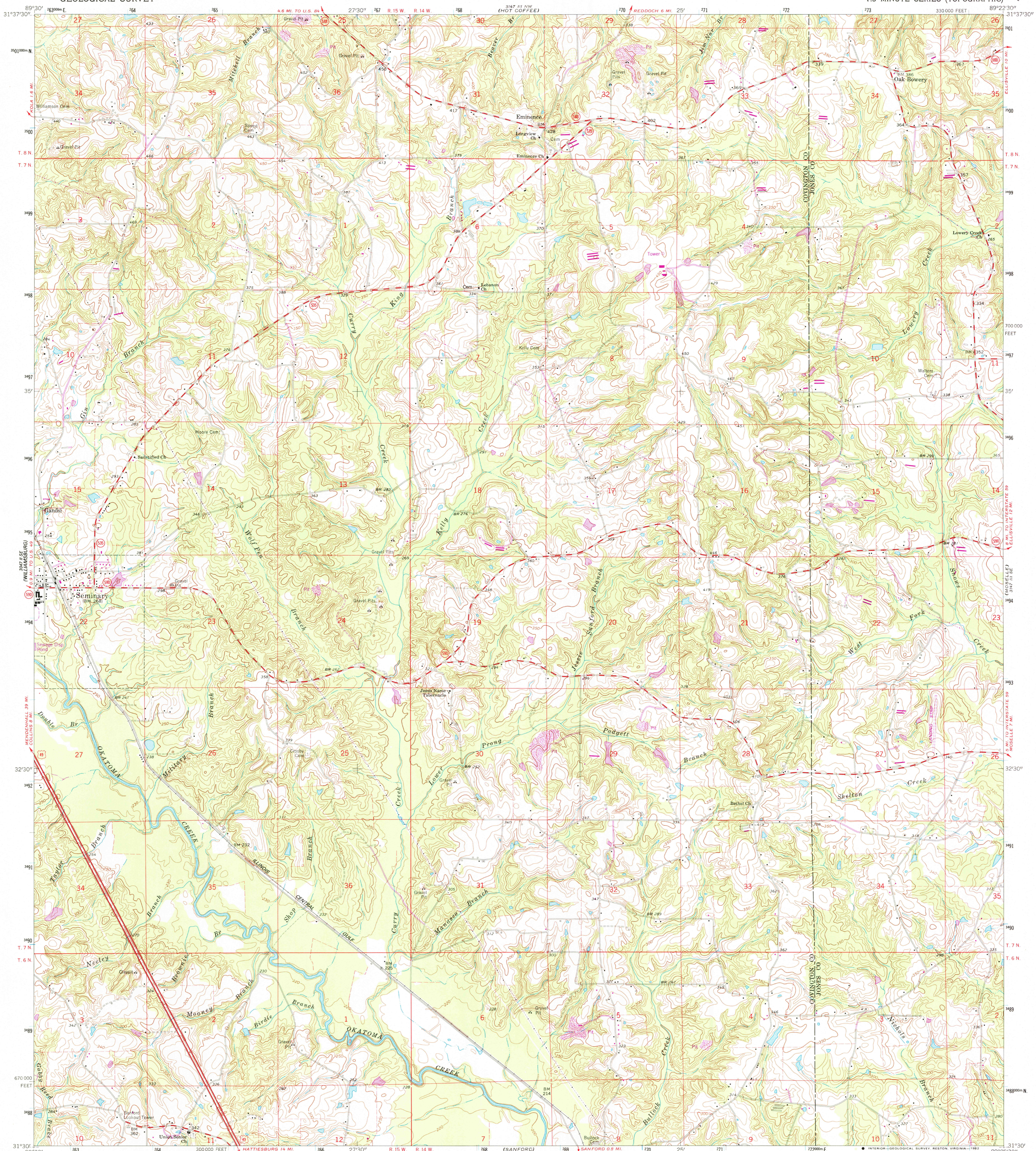


(W 1/4) NE
(E 1/4) NE
(S 1/4) NE
(SW 1/4) NE

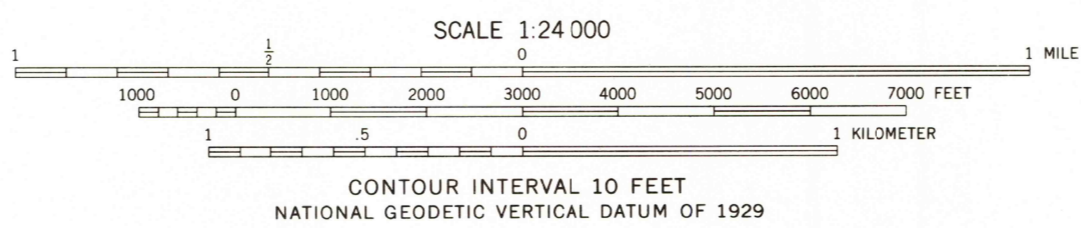
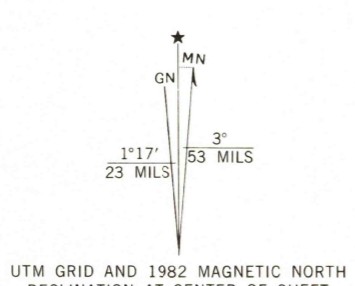
UNITED STATES
DEPARTMENT OF THE INTERIOR
GEOLOGICAL SURVEY

SEMINARY QUADRANGLE
MISSISSIPPI
7.5 MINUTE SERIES (TOPOGRAPHIC)

(W 1/4) NE
(E 1/4) NE
(S 1/4) NE
(SW 1/4) NE



Maped, edited, and published by the Geological Survey
Control by USGS and USC&GS
Topography by photogrammetric methods from aerial
photographs taken 1960. Field checked 1964
Polyconic projection. 1927 North American datum
10,000-foot grid based on Mississippi coordinate system, east zone
1000-meter Universal Transverse Mercator grid ticks,
zone 16, shown in blue
Fine red dashed lines indicate selected fence and field lines where
generally visible on aerial photographs. This information is unchecked
To place on the predicted North American Datum 1983
move the projection lines 15 meters south and
6 meters east as shown by dashed corner ticks
Revisions shown in purple compiled from aerial photographs taken 1980
and other sources. This information not field checked. Map edited 1982



ROAD CLASSIFICATION	
Heavy-duty	Light-duty
Medium-duty	Unimproved dirt
U. S. Route	State Route

RETURN TO:
USGS NHD HISTORICAL MAP ARCHIVES

SEMINARY, MISS.
N3130—W8922.5/7.5
1964
PHOTOREVISED 1982
DMA 5147 III SW—SERIES V843

OCT 28 1982