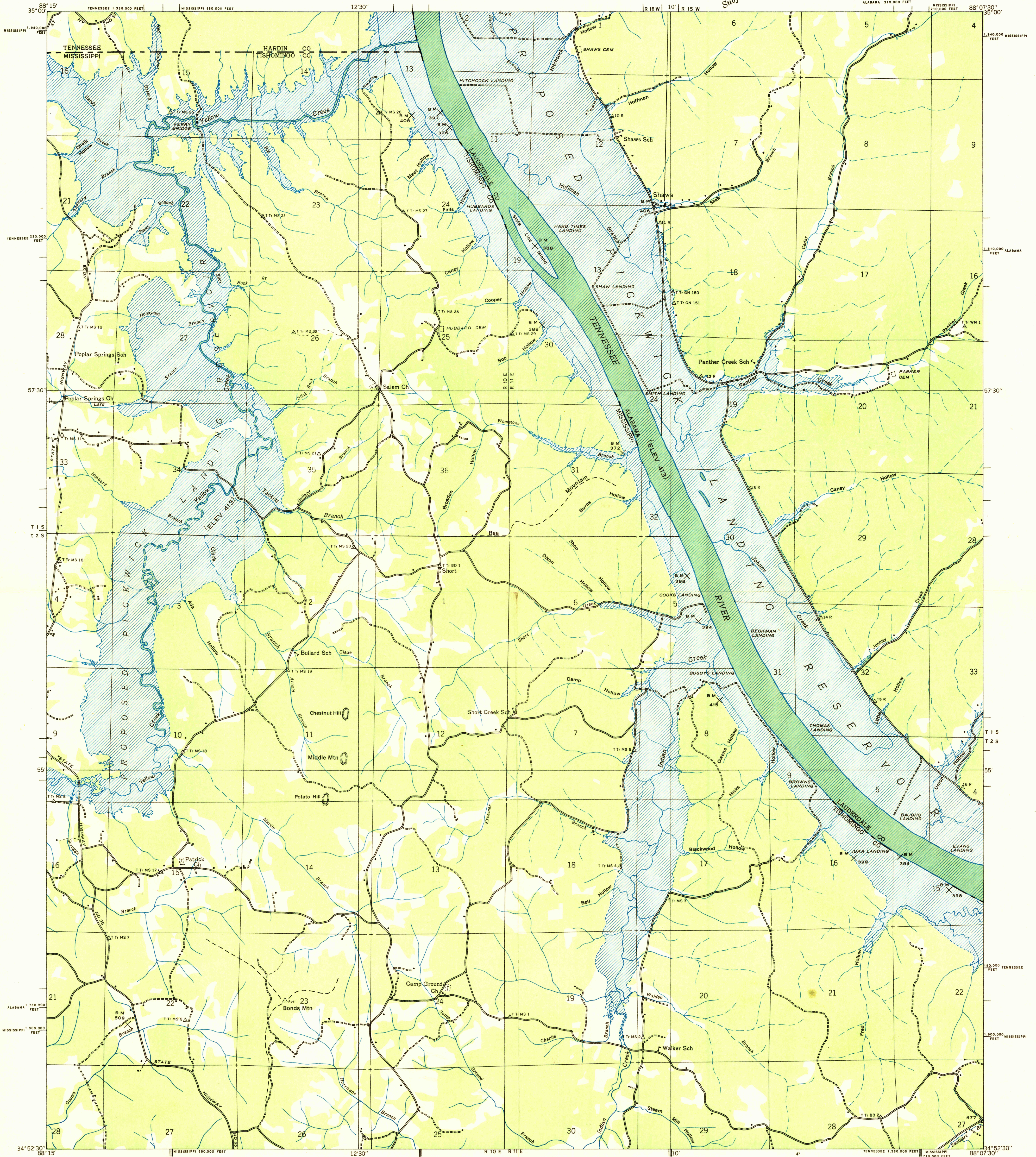
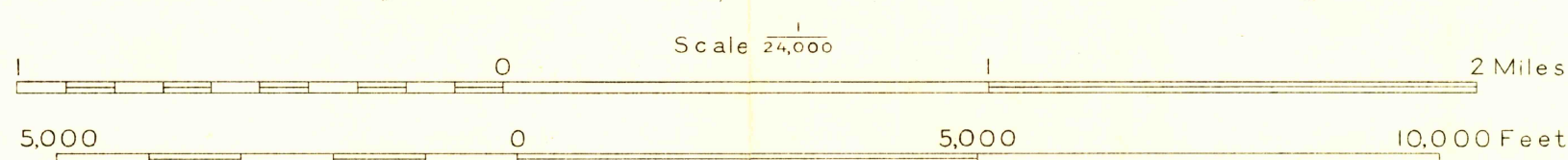


Advance sheet
Subject to correction



Albert Pike, Division Engineer
Compiled by U. S. Geological Survey from aerial photographs
Control by U. S. Geological Survey, U. S. Coast and Geodetic Survey,
Corps of Engineers, U. S. Army and Tenn. Valley Authority
Reservoir outline from surveys by the Tennessee Valley Authority
Field examination in 1936



Datum is mean sea level

TRUE NORTH
MAGNETIC NORTH
APPROXIMATE MEAN
DECLINATION, 1936

Polygonic projection. 1927 North American datum
10,000 foot grid based on Mississippi (East).
Alabama (West) and Tennessee
rectangular coordinate systems

Ridge line
Trail
Probable drainage

SHAWS, MISS.-ALA.-TENN.
25-NW

Name changed to Yellow Creek 3-28-57
JTB