

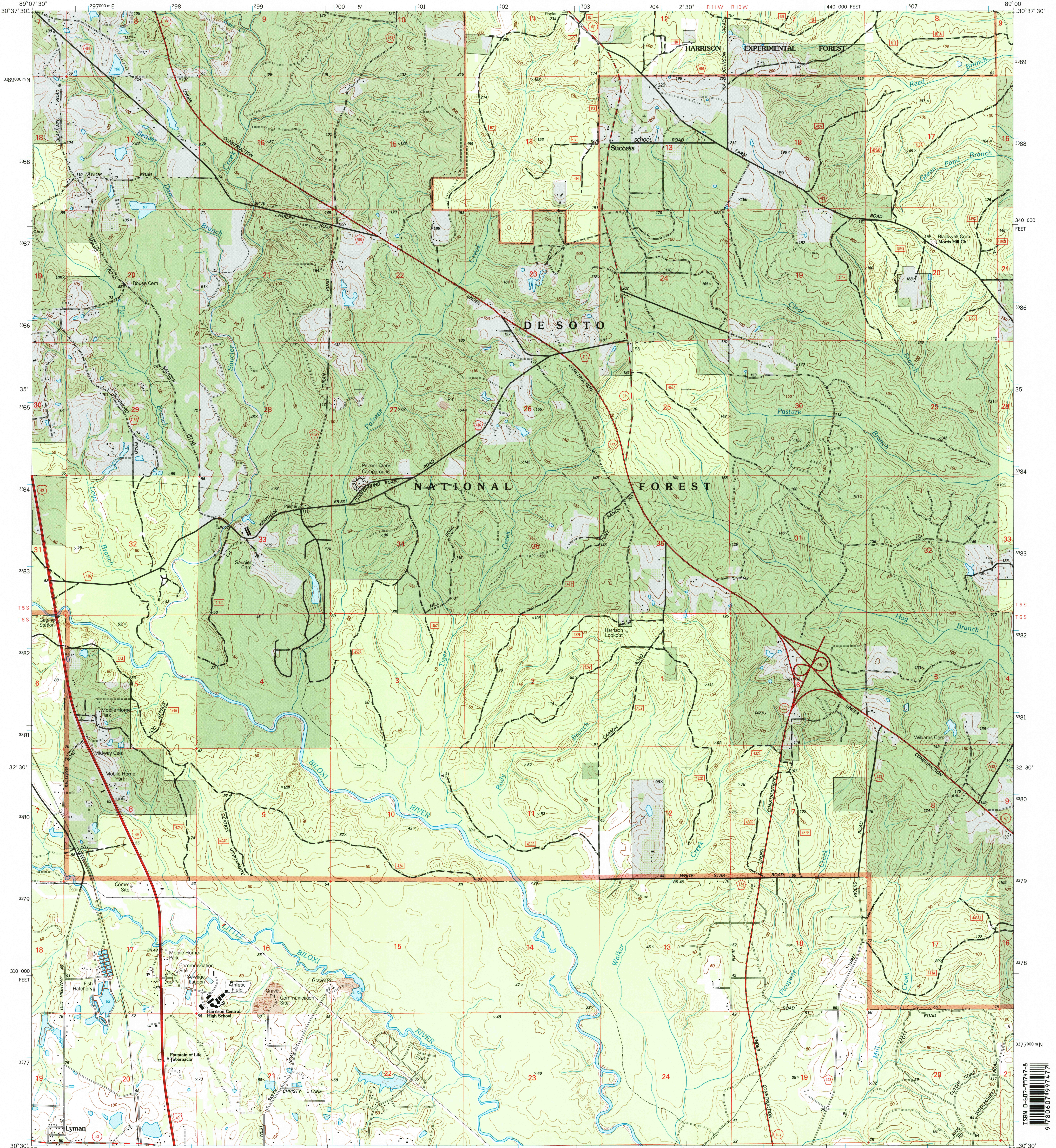


U.S. DEPARTMENT OF THE INTERIOR
U.S. GEOLOGICAL SURVEY

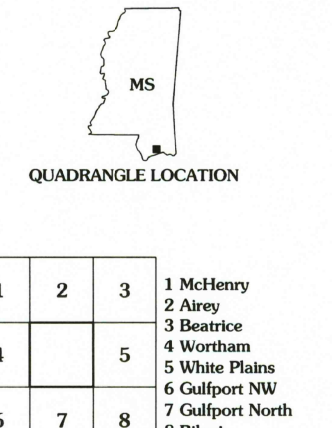
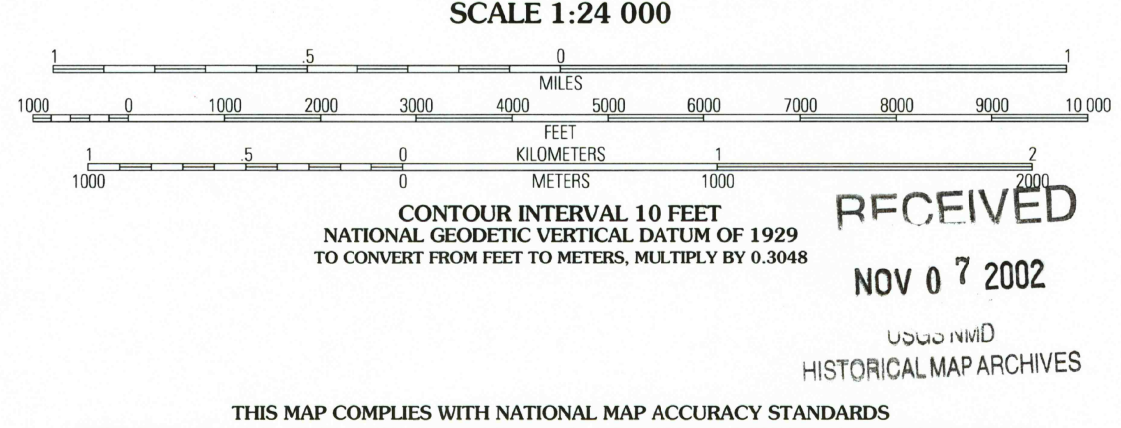
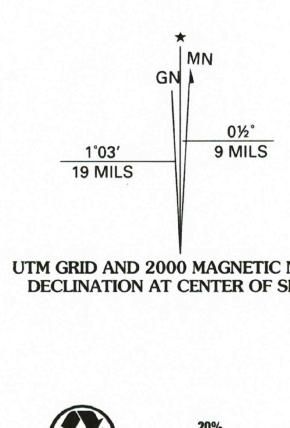


U.S. DEPARTMENT OF AGRICULTURE
FOREST SERVICE

SUCCESS QUADRANGLE
MISSISSIPPI-HARRISON CO.
7.5-MINUTE SERIES (TOPOGRAPHIC)



Produced by the United States Geological Survey 1982
Revision by USDA Forest Service 2000
Topography compiled 1976. Planimetry derived from imagery taken 1998 and other sources. Public Land Survey System and survey control current as of 2001.
North American Datum of 1927 (NAD 27). Projection and 10 000-foot ticks: Mississippi coordinate system, east zone (transverse Mercator)
Blue 1000-meter Universal Transverse Mercator ticks, zone 16
North American Datum of 1983 (NAD 83) is shown by dashed corner ticks
The values of the shift between NAD 27 and NAD 83 for 7.5-minute intersections are obtainable from National Geodetic Survey NADCON software
Non-National Forest System lands within the National Forest
Inholdings may exist in other National or State reservations
This map is not a legal land line or ownership document. Public lands are subject to change and leasing, and may have access restrictions; check with local offices. Obtain permission before entering private lands



HIGHWAYS AND ROADS	
Interstate	
U. S.	
State	
County	
National Forest, suitable for passenger cars	
National Forest, suitable for high clearance vehicles	
National Forest Trail	
Primary highway	
Secondary highway	
Light-duty road	
Composition: Unspecified...	
Paved	
Gravel	
Dirt	
Unimproved: 4 wheel drive	
Trail	
Gate; Barrier	

THIS MAP COMPLIES WITH NATIONAL MAP ACCURACY STANDARDS
FOR SALE BY U.S. GEOLOGICAL SURVEY, P.O. BOX 25286, DENVER, COLORADO 80225
A FOLDER DESCRIBING TOPOGRAPHIC MAPS AND SYMBOLS IS AVAILABLE ON REQUEST

1	2	3	1 McHenry
4	5	4	2 Airey
6	7	8	3 Boatice
			4 Wortham
			5 White Plains
			6 Gulfport NW
			7 Gulfport North
			8 Blod

SUCCESS, MS
2000
30089-EI-TF-024
NIMA 3145 II SE-SERIES V843