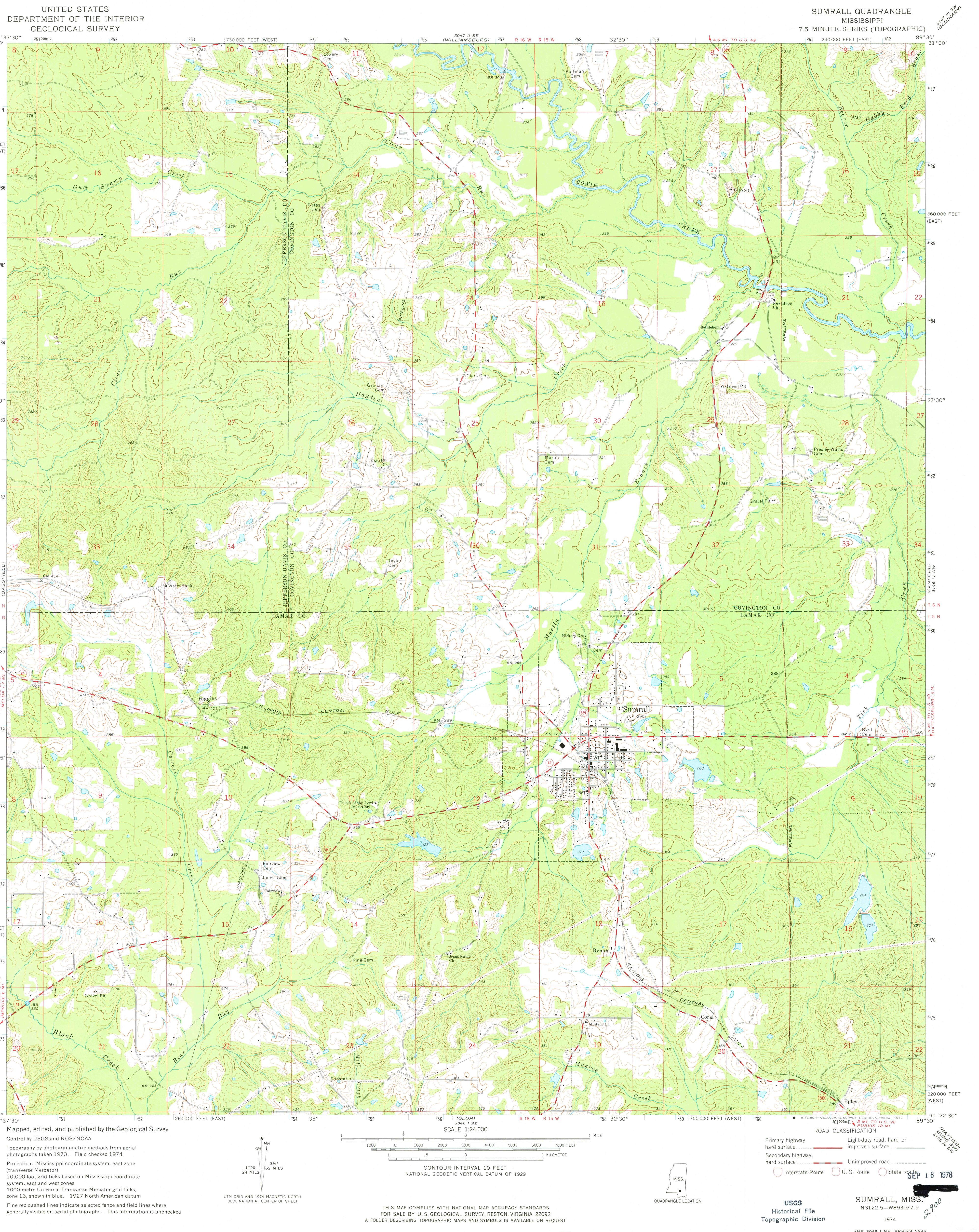
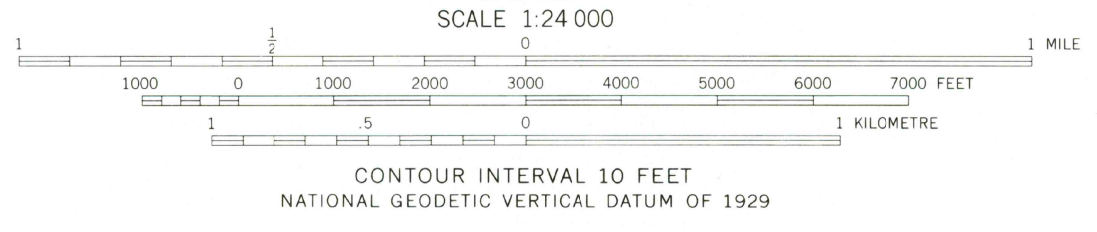
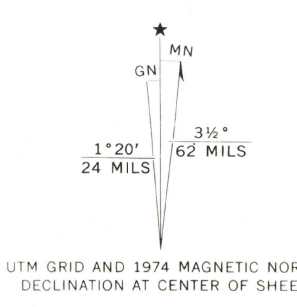


3046 1/4 NW (BASSFIELD)  
3046 1/4 SW (SEMINARY)  
3046 1/4 SE (WILLIAMSBURG)  
3046 1/4 NE (SUMRALL)  
3046 1/4 E (PURVIS)  
3046 1/4 W (HATTIESBURG)  
3046 1/4 S (BAY)  
3046 1/4 N (SUMRALL)  
3046 1/4 NE (SUMRALL)  
3046 1/4 SE (WILLIAMSBURG)  
3046 1/4 SW (SEMINARY)  
3046 1/4 S (BAY)  
3046 1/4 N (SUMRALL)



3046 1/4 NW (BASSFIELD)  
3046 1/4 SW (SEMINARY)  
3046 1/4 SE (WILLIAMSBURG)  
3046 1/4 NE (SUMRALL)  
3046 1/4 E (PURVIS)  
3046 1/4 W (HATTIESBURG)  
3046 1/4 S (BAY)  
3046 1/4 N (SUMRALL)  
3046 1/4 NE (SUMRALL)  
3046 1/4 SE (WILLIAMSBURG)  
3046 1/4 SW (SEMINARY)  
3046 1/4 S (BAY)  
3046 1/4 N (SUMRALL)

Mapped, edited, and published by the Geological Survey  
Control by USGS and NOS/NOAA  
Topography by photogrammetric methods from aerial photographs taken 1973. Field checked 1974  
Projection: Mississippi coordinate system, east zone (transverse Mercator)  
10,000-foot grid ticks based on Mississippi coordinate system, east and west zones  
1000-metre Universal Transverse Mercator grid ticks, zone 16, shown in blue. 1927 North American datum  
Fine red dashed lines indicate selected fence and field lines where generally visible on aerial photographs. This information is unchecked



**ROAD CLASSIFICATION**

Primary highway, hard surface	Light-duty road, hard or improved surface
Secondary highway, hard surface	Unimproved road
Interstate Route	U. S. Route
	State Route

**USGS**  
Historical File  
Topographic Division

**SUMRALL, MISS.**  
N3122.5-W8930/7.5  
1974

AMS 5046 1 NE-SERIES W843

THIS MAP COMPLIES WITH NATIONAL MAP ACCURACY STANDARDS  
FOR SALE BY U. S. GEOLOGICAL SURVEY, RESTON, VIRGINIA 22092  
A FOLDER DESCRIBING TOPOGRAPHIC MAPS AND SYMBOLS IS AVAILABLE ON REQUEST