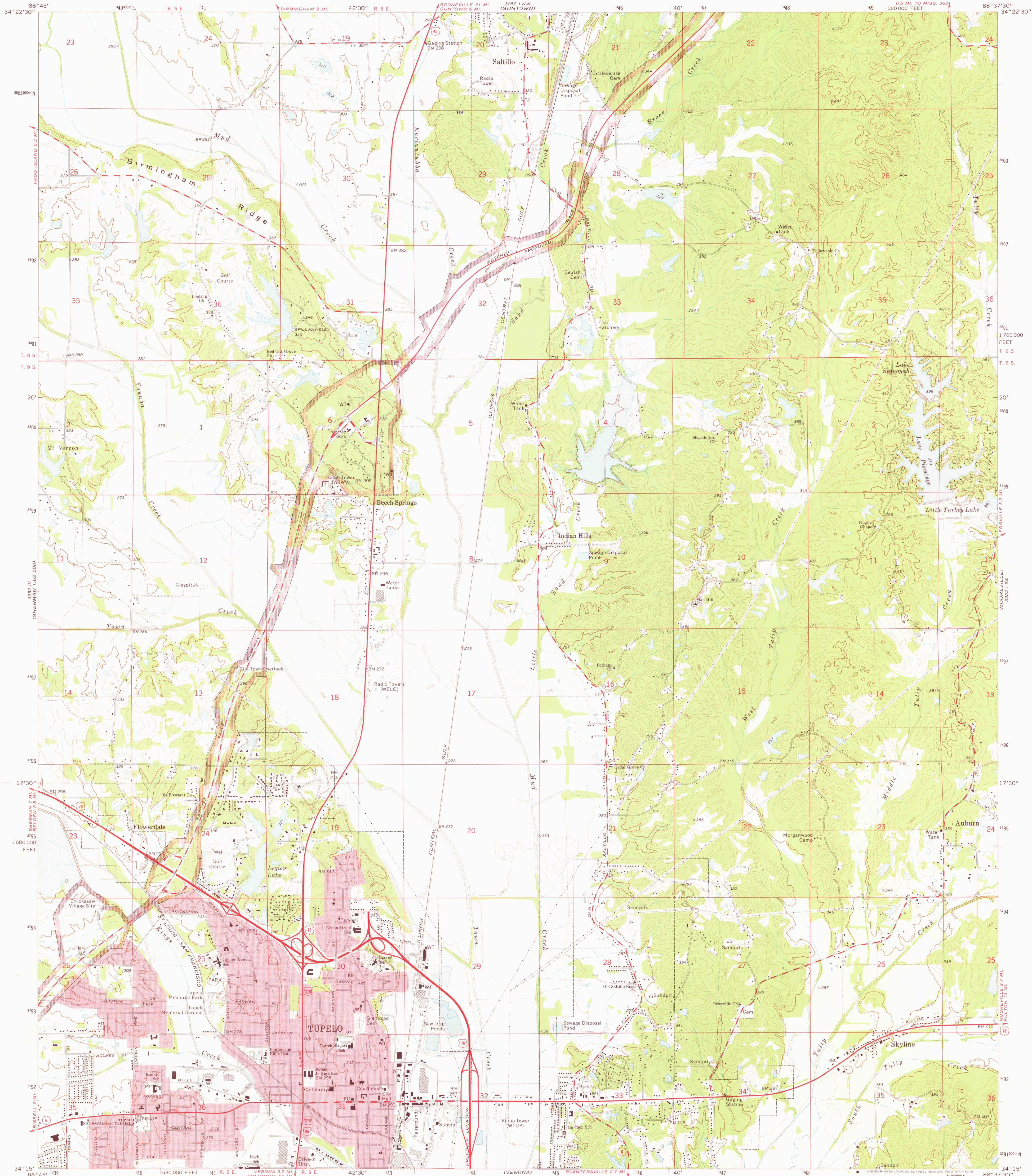
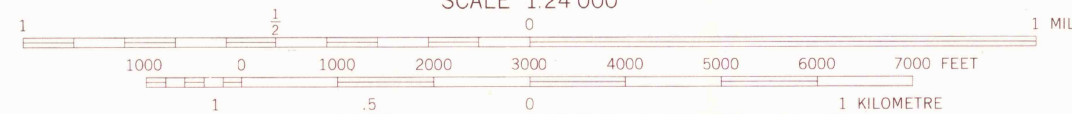
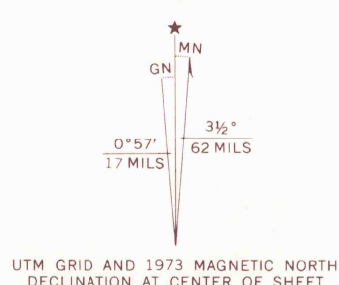


UNITED STATES
DEPARTMENT OF THE INTERIOR
GEOLOGICAL SURVEY

TUPELO QUADRANGLE
MISSISSIPPI-LEE CO.
7.5 MINUTE SERIES (TOPOGRAPHIC)



Mapped, edited, and published by the Geological Survey
Control by USGS and USC&GS
Topography by photogrammetric methods from aerial
photographs taken 1972. Field checked 1973
Projection and 10,000-foot grid ticks: Mississippi coordinate
system, east zone (transverse Mercator)
1000-metre Universal Transverse Mercator grid ticks,
zone 16, shown in blue. 1927 North American datum
Red tint indicates areas in which only landmark buildings are shown
Areas covered by dashed light-blue pattern
are subject to controlled inundation
Fine red dashed lines indicate selected fence and field lines where
generally visible on aerial photographs. This information is unchecked



CONTOUR INTERVAL 20 FEET
DOTTED LINES REPRESENT 10-FOOT CONTOURS
NATIONAL GEODETIC VERTICAL DATUM OF 1929

THIS MAP COMPLIES WITH NATIONAL MAP ACCURACY STANDARDS
FOR SALE BY U. S. GEOLOGICAL SURVEY, RESTON, VIRGINIA 22092
A FOLDER DESCRIBING TOPOGRAPHIC MAPS AND SYMBOLS IS AVAILABLE ON REQUEST



QUADRANGLE LOCATION

ROAD CLASSIFICATION
Primary highway, hard surface
Secondary highway, hard surface
Unimproved road
Light-duty road, hard or improved surface
Unimproved road
Interstate Route
U. S. Route
State Route

U.S.G.S.
HISTORICAL FILE
TOPOGRAPHIC DIVISION

TUPELO, MISS.
SW 1/4 TUPELO 15' QUADRANGLE
N3415-W8837.5/7.5
1973

AMS 3252 I SW-SERIES 5843

SEP 26 1975
3115