

**1:100 000-scale metric  
topographic map**

- Contours and elevations in meters
- Highways, roads and other manmade structures
- Water features
- Woodland areas
- Geographic names



Projection and 10 000-meter grid, zone 16,  
Universal Transverse Mercator  
25 000-foot grid ticks based on Mississippi coordinate system,  
east zone and Alabama coordinate system, west zone  
1927 North American Datum  
To place on the predicted North American Datum 1983, move  
the projection lines 12 meters south and 3 meters east  
There may be private inholdings within the boundaries of  
the National or State reservations shown on this map

THIS MAP COMPLIES WITH NATIONAL MAP ACCURACY STANDARD

Meters	Feet
1	3.2808
2	6.5617
3	9.8425
4	13.1234
5	16.4042
6	19.6850
7	22.9659
8	26.2467
9	29.5276
10	32.8084

Declination Diagram: Shows GN (Geographic North) and MN (Magnetic North) lines. The angle between them is 0°49' (labeled as 0°49' and 2°19'). The distance between the lines is 44 MILES.

1	2	3
4	5	6
7	8	9

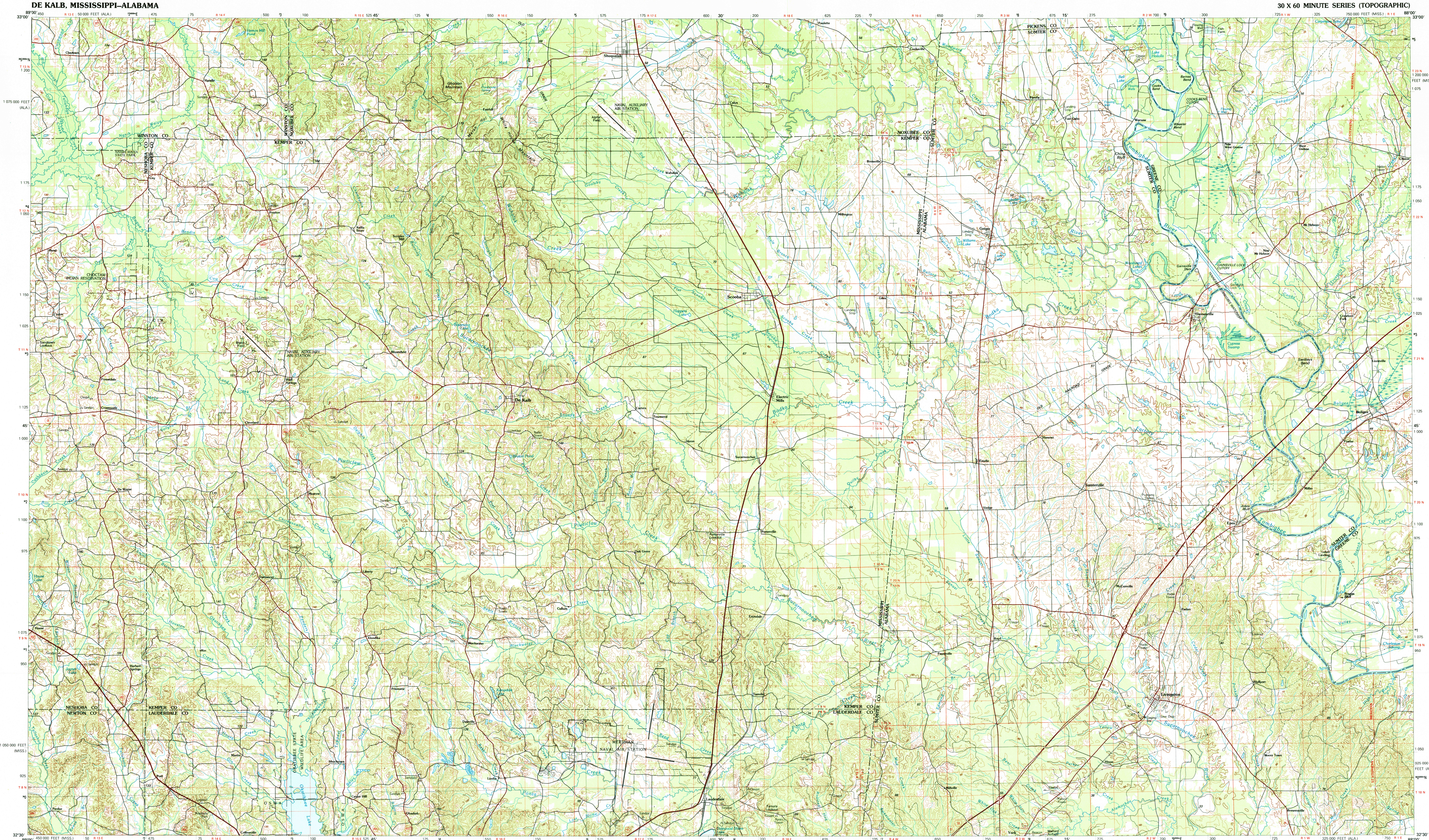
UTM grid convergence (GN) and 1984 magnetic declination (MN) at center of map  
 Diagram is approximate

To convert meters to feet multiply by 3.2808  
 To convert feet to meters multiply by 0.3048

1	Kauai
2	Siakoua
3	Taaloa
4	Carthage
5	Demodene
6	Favent
7	Medican
8	Selma

Primary highway, hard surface  
Secondary highway, hard surface  
Light duty road, principal street, hard or improved surface  
Other road or street; trail  
Route marker; Interstate; U.S.; State  
Roadmark: standard page, narrow page  
Bridge: overpass; underpass  
Tunnel; road; railroad  
Built up area; locality; elevation  
Airport: landing field; landing strip  
National boundary  
State boundary  
County boundary  
National or State reservation boundary  
Land grant boundary  
U.S. public lands; range, township; section  
Range, township; section line; protected  
Power transmission line; pipeline  
Dam; dam with lock  
Cemetery; building  
Windsurf; water wheel; spring  
Mine shaft; oil well; mine; quarry; gravel pit  
Cannals; ponic area; U.S. location monument  
Ruins; cliff dwelling  
Distorted surface: strip mine; lava; sand  
Stream; index; intermittent; supplementary  
Bathymetric contours; index; intermediate  
Cobble, lake; perennial; intermittent  
Rapids, large and small; falls, large and small  
Area to be submerged; marsh, swamp  
Land subject to controlled inundation; woodland  
Strata; mire  
Orchard; vineyard

A pamphlet describing topographic maps is available on request.



**DE KALB, MISSISSIPPI-ALABAMA**  
32088-E1-TM-100

1984