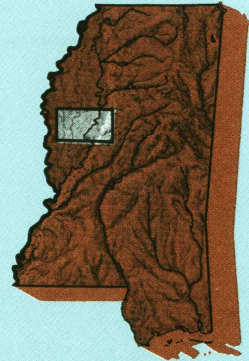


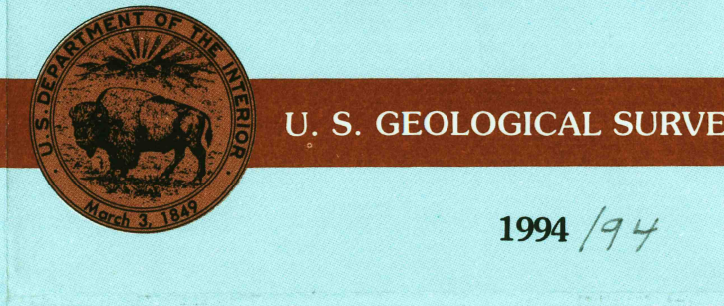
# Indianola MISSISSIPPI

1:100 000-scale metric  
topographic map



30 X 60 MINUTE QUADRANGLE  
SHOWING

- Contours and elevations in meters
- Highways, roads and other manmade structures
- Water features
- Woodland areas
- Geographic names



Produced by the United States Geological Survey  
Compiled from USGS 1:24 000-scale topographic maps dated 1965-1983. Planimetry revised from aerial photographs taken 1991-92 and other source data. Revised information not field checked. Map edited 1994  
1927 North American Datum (NAD 27). Projection and 10 000-meter grid: Universal Transverse Mercator, zone 15 25 000-foot ticks: Mississippi coordinate system, west zone  
The difference between NAD 27 and North American Datum of 1983 (NAD 83) is too small to show at this scale. The values of the shift between the datums for 7.5-minute intersections are given in USGS Bulletin 1875  
There may be private inholdings within the boundaries of the National or State reservations shown on this map

CONTOUR INTERVAL 10 METERS  
SUPPLEMENTARY CONTOUR INTERVAL: 5 METERS  
NATIONAL GEODETIC VERTICAL DATUM OF 1929  
ELEVATIONS SHOWN TO THE NEAREST METER

THIS MAP COMPLIES WITH NATIONAL MAP ACCURACY STANDARD

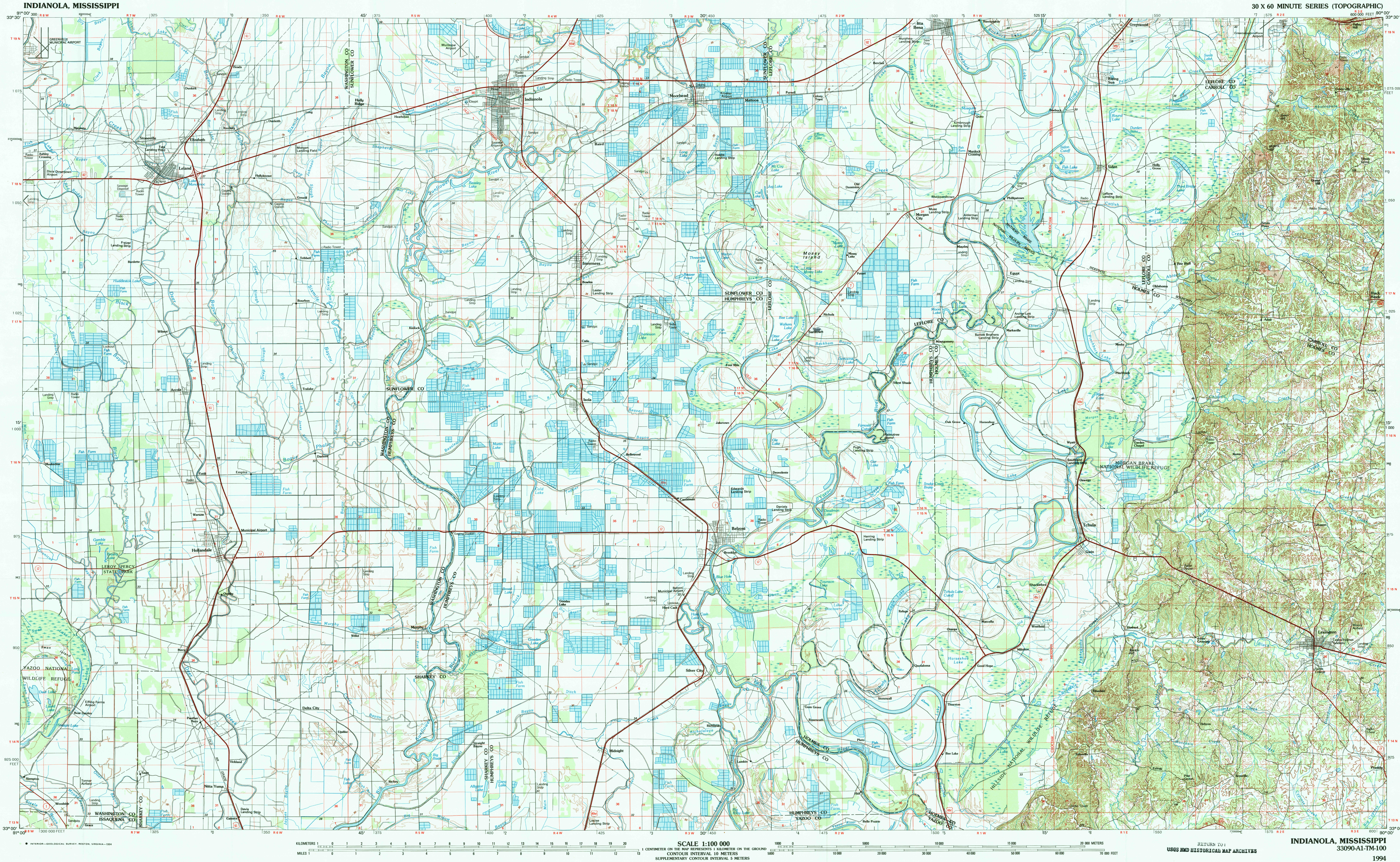
CONVERSION TABLE		DECLINATION DIAGRAM	ADJOINING MAPS	
Meters	Feet		1	2
1	3.2808		1	2
2	6.5617		3	4
3	9.8425		5	6
4	13.1234		7	8
5	16.4042			
6	19.6850			
7	22.9658			
8	26.2467			
9	29.5275			
10	32.8084			
To convert meters to feet multiply by 3.2808		UTM grid convergence (GN and true magnetic declination (MN) at center of map. Diagram is approximate		
To convert feet to meters multiply by 0.3048				

FOR SALE BY U.S. GEOLOGICAL SURVEY  
DENVER, COLORADO 80225, OR RESTON, VIRGINIA 22092

## Topographic Map Symbols

Primary highway, hard surface	
Secondary highway, hard surface	
Light duty road, principal street, hard or improved surface	
Other road or street; trail	
Route marker: Interstate, U.S. State	
Railroad: standard gage; narrow gage	
Bridge: overpass; underpass	
Tunnel: road; railroad	
Built up area; locality; elevation	
Airport: landing field; landing strip	
National boundary	
State boundary	
County boundary	
Civil township boundary	
National or State reservation boundary	
Land grant boundary	
U.S. public land survey: range, township, section	
Range, township, section line: projected	
Power transmission line; pipeline	
Dam; dam with lock	
Cemetery; burial	
Wellhead; water well; spring	
Mine shaft; salt or cave; mine; quarry; gravel pit	
Campground; picnic area; U.S. location monument	
Ruins; cliff dwelling	
Disturbed surface: strip mine; lava; sand	
Contours: index; intermediate; supplementary	
Bathymetric contours: index; intermediate	
Stream, lake; perennial; intermittent	
Rapids; large and small; falls; large and small	
Area to be submerged; marsh; swamp	
Land subject to controlled inundation; woodland	
Scrub; mangrove	
Orchard; vineyard	

A pamphlet describing topographic maps is available on request



SCALE 1:100 000

1 CENTIMETER ON THE MAP REPRESENTS 1 KILOMETER ON THE GROUND

CONTOUR INTERVAL 10 METERS

SUPPLEMENTARY CONTOUR INTERVAL 5 METERS

RETURN TO:  
USGS AND HISTORICAL MAP ARCHIVES

INDIANOLA, MISSISSIPPI  
33090-A1-TM-100

1994