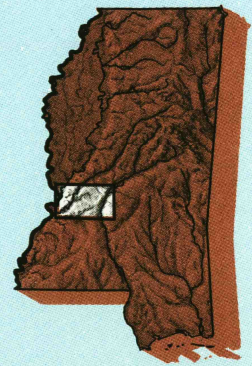


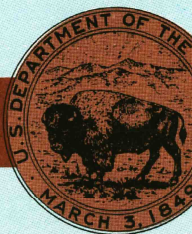
Jackson  
MISSISSIPPI-LOUISIANA

1:100 000-scale metric  
topographic map



30 X 60 MINUTE QUADRANGLE  
SHOWING

- Contours and elevations  
in meters
- Highways, roads and other  
manmade structures
- Water features
- Woodland areas
- Geographic names



GEOLOGICAL SURVEY

1984/89

Produced by the United States Geological Survey

Compiled from USGS 1:24 000-scale topographic maps  
dated 1962-1980. Planimetry revised from aerial photographs  
taken 1982 and other source data. Revised information not  
field checked. Map edited 1984

Projection and 10 000-meter grid, zone 15,  
Universal Transverse Mercator  
25 000-foot grid ticks based on Mississippi coordinate system,  
west zone and Louisiana coordinate system, north zone  
1927 North American Datum  
To place on the predicted North American Datum 1983, move  
the projection lines 13 meters south and 9 meters east  
There may be private inholdings within the boundaries of  
the National or State reservations shown on this map

CONTOUR INTERVAL 10 METERS

SUPPLEMENTARY CONTOUR INTERVAL 5 METERS

NATIONAL GEODETIC VERTICAL DATUM OF 1929

ELEVATIONS SHOWN TO THE NEAREST METER

THIS MAP COMPLIES WITH NATIONAL MAP ACCURACY STANDARDS

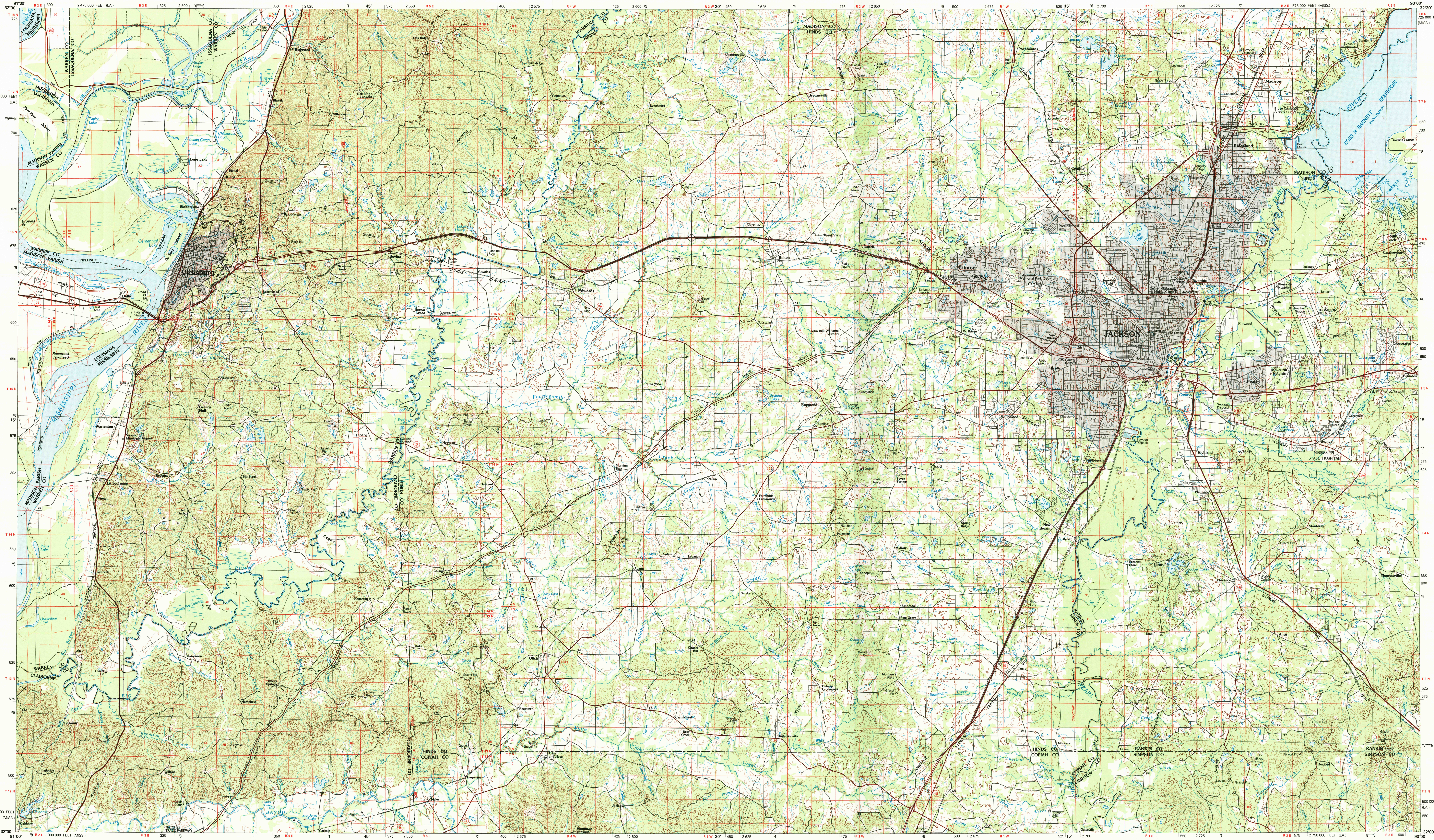
CONVERSION TABLE		DECLINATION DIAGRAM	ADJOINING MAPS			
Meters	Feet		1	2	3	
1	3.2808		4	5		
2	6.5617					
3	9.8425					
4	13.1234					
5	16.4042					
6	19.6850					
7	22.9658					
8	26.2467					
9	29.5275					
10	32.8084					
To convert meters to feet multiply by 3.2808		UTM grid convergence (GN) and 1983 magnetic declination (MD) at center of map Diagram is approximate				
To convert feet to meters multiply by 0.3048				1 Bastrop 2 Vicksburg 3 Carthage 4 Tallahassee 5 Fort Worth 6 Natchez 7 Brookhaven 8 Laurel		

FOR SALE BY U.S. GEOLOGICAL SURVEY, DENVER, COLORADO 80225  
OR RESTON, VIRGINIA 22092

Topographic Map Symbols

Primary highway, hard surface.....	
Secondary highway, hard surface.....	
Light duty road, principal street, hard or improved surface.....	
Other road or open trail.....	
Route marker: Interstate, U.S., State.....	
Railroad: standard gage, narrow gage.....	
Bridge: overpass, underpass.....	
Tunnel: road, railroad.....	
Built-up area, building, elevation.....	
Airport: landing field, landing strip.....	
National boundary.....	
State boundary.....	
County boundary.....	
National or State reservation boundary.....	
Land grant boundary.....	
U.S. public lands survey: range, township, section.....	
Range, township, section line: protracted.....	
Power transmission line: pipeline.....	
Dam, dam with lock.....	
Cemetery, building.....	
Windmill; water well; spring.....	
Mine shaft; adit or cave; mine, quarry; gravel pit.....	
Campground; picnic area; U.S. location monument.....	
Ruins, cliff dwelling.....	
Distorted surface: strip mine, lava, sand.....	
Bathymetric contours: index, intermediate.....	
Stream: lake, general; intermittent.....	
Ruins, cliff dwelling.....	
Rapids, large and small; falls, large and small.....	
Area to be submerged; marsh, swamp.....	
Land subject to controlled inundation: woodfield.....	
Scrub, mangrove.....	
Creted; viewshed.....	

A pamphlet describing topographic maps is available on request



SCALE 1:100 000

1 CENTIMETER ON THE MAP REPRESENTS 1 KILOMETER ON THE GROUND

CONTOUR INTERVAL 10 METERS

SUPPLEMENTARY CONTOUR INTERVAL 5 METERS

JACKSON, MISSISSIPPI-LOUISIANA  
32090-A1-TM-100