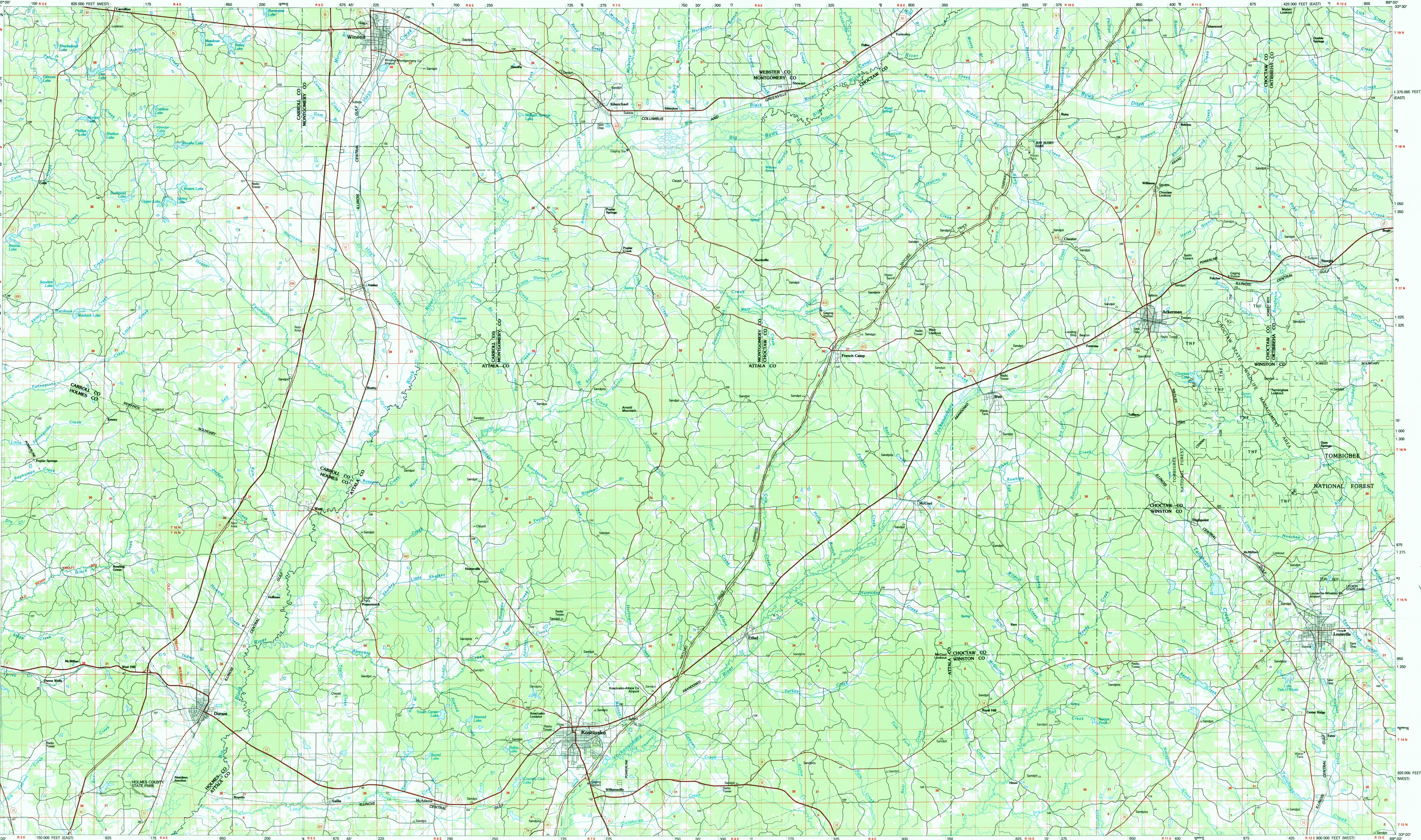


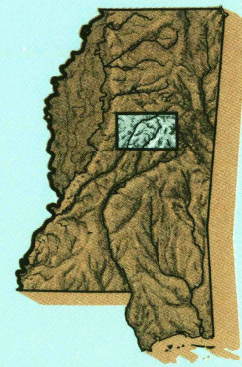
KOSCIUSKO, MISSISSIPPI



30 X 60 MINUTE SERIES (PLANIMETRIC)
KOSCIUSKO, MISSISSIPPI
33089-A1-PL-100
1984

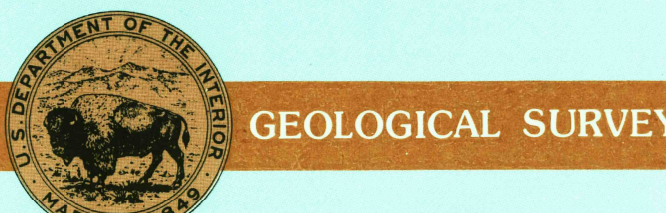
Kosciusko
MISSISSIPPI

1:100 000-scale
planimetric map



30 X 60 MINUTE QUADRANGLE
SHOWING

- Elevations in meters
- Highways, roads and other manmade structures
- Water features
- Woodland areas
- Geographic names



Produced by the United States Geological Survey

Compiled from USGS 1:24 000-scale topographic maps dated 1964-1982. Planimetry revised from aerial photographs taken 1980 and other source data. Revised information not field checked. Map edited 1984.
Projection and 10 000-meter grid, zone 16, Universal Transverse Mercator
25 000-foot grid ticks based on Mississippi coordinate system, east and west zones
1927 North American Datum
To place on the predicted North American Datum 1983, move the projection lines 11 meters south and 6 meters east
There may be private inholdings within the boundaries of the National or State reservations shown on this map.

NATIONAL GEODETIC VERTICAL DATUM OF 1929
ELEVATIONS SHOWN TO THE NEAREST METER

THIS MAP COMPLIES WITH NATIONAL MAP ACCURACY STANDARDS

| CONVERSION TABLE | | DECLINATION DIAGRAM | ADJOINING MAPS | | | |
|--|---------|---|----------------|---|---|---|
| Meters | Feet | | 1 | 2 | 3 | |
| 1 | 3.2808 | | 4 | 5 | 6 | 7 |
| 2 | 6.5617 | | | | | |
| 3 | 9.8425 | | | | | |
| 4 | 13.1234 | | | | | |
| 5 | 16.4042 | | | | | |
| 6 | 19.6850 | | | | | |
| 7 | 22.9659 | | | | | |
| 8 | 26.2467 | | | | | |
| 9 | 29.5275 | | | | | |
| 10 | 32.8084 | | | | | |
| To convert meters to feet multiply by 2.208 | | UTM grid convergence (GV) and easting (EV) at center of map | | | | |
| To convert feet to meters multiply by 0.3048 | | Diagram is approximate | | | | |

FOR SALE BY U.S. GEOLOGICAL SURVEY
DENVER, COLORADO 80225, OR RESTON, VIRGINIA 22092

JAN 24 1980

REC'D FILE COPY

Topographic Map Symbols

| | |
|---|--|
| Primary highway, hard surface | |
| Secondary highway, hard surface | |
| Light duty road, principal street, hard or improved surface | |
| Other road or street, trail | |
| Route marker: Interstate, U.S. State | |
| Railroad: standard gauge, narrow gauge | |
| Bridge, overpass, underpass | |
| Tunnel: road, railroad | |
| Built up area, locality, elevation | |
| Airport: landing field, landing strip | |
| National boundary | |
| State boundary | |
| County boundary | |
| National or State reservation boundary | |
| Land grant boundary | |
| U.S. public lands survey: range, township, section | |
| Range, township, section line, projected | |
| Power transmission line, pipeline | |
| Dam, dam with lock | |
| Cemetery, building | |
| Winnant, water well, spring | |
| Mine shaft, adit or cave, mine, quarry, gravel pit | |
| Campground, picnic area, U.S. location monument | |
| Ruin, cliff dwelling | |
| Distorted surface: strip mine, lava, sand | |
| Contours: index, intermediate, supplementary | |
| Bathymetric contours: index, intermediate | |
| Stream, lake, perennial, intermittent | |
| Rapids, large and small; falls, large and small | |
| Area to be submerged, marsh, swamp | |
| Land subject to controlled inundation; woodland | |
| Soils: meadow | |
| Orchard, vineyard | |

A pamphlet describing topographic maps is available on request