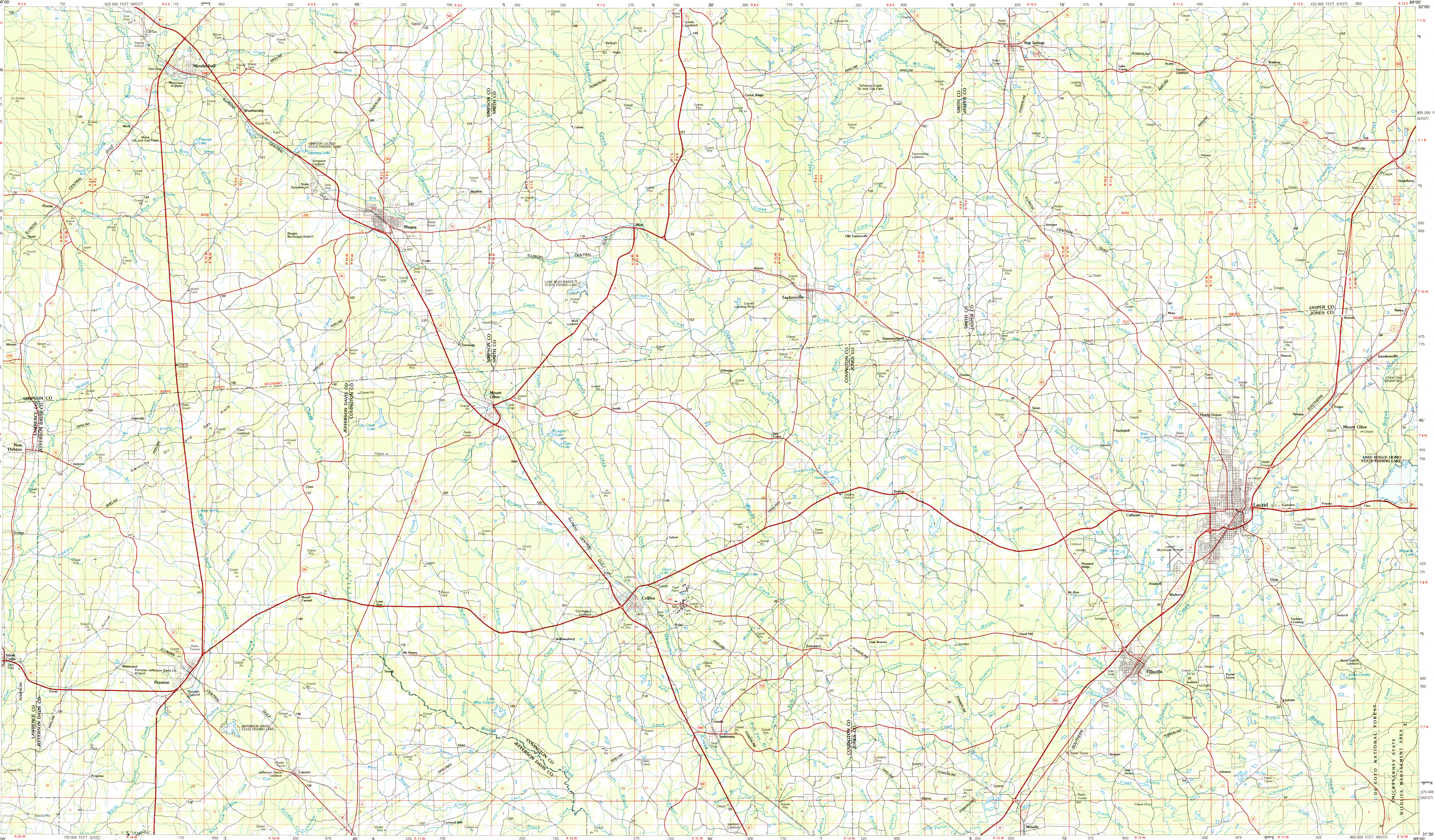


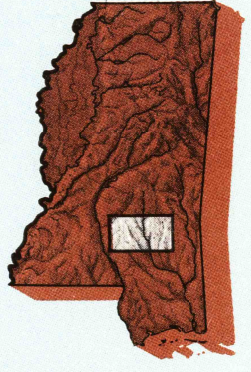
LAUREL, MISSISSIPPI

30 X 60 MINUTE SERIES (PLANIMETRIC)



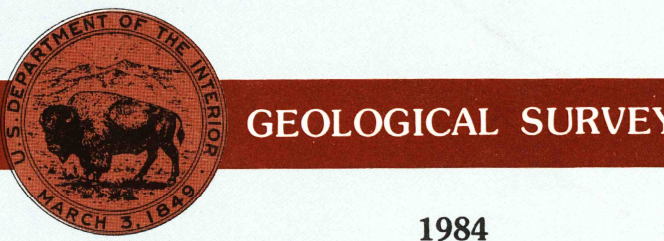
Laurel
MISSISSIPPI

1:100 000-scale metric
planimetric map



30 X 60 MINUTE QUADRANGLE
SHOWING

- Elevations in meters
- Highways, roads and other manmade structures
- Water features
- Woodland areas
- Geographic names



Produced by the United States Geological Survey
Compiled from USGS 1:24 000-scale topographic maps dated 1963-1975. Planimetry revised from aerial photographs taken 1960 and other source data. Revised information not field checked. Map edited 1984.
Projection and 10 000-meter grid, zone 16, Universal Transverse Mercator
25 000-foot grid ticks based on Mississippi coordinate system, east and west zones
1927 North American Datum
To place on the predicted North American Datum 1983 move the projection lines 15 meters south and 6 meters east
There may be private inholdings within the boundaries of the National or State reservations shown on this map

NATIONAL GEODETIC VERTICAL DATUM OF 1929
ELEVATIONS SHOWN TO THE NEAREST METER

THIS MAP COMPLIES WITH NATIONAL MAP ACCURACY STANDARDS

CONVERSION TABLE		DECLINATION DIAGRAM	ADJOINING MAPS				
Meters	Feet		1	2	3		
1	3.2808		4	5			
2	6.5617						
3	9.8425						
4	13.1234						
5	16.4042						
6	19.6850						
7	22.9659						
8	26.2467						
9	29.5276						
10	32.8084						
To convert meters to feet multiply by 3.2808		UTM grid convergence (GM) and 1983 magnetic declination (MD) at center of map. Diagram is approximate		1 Jackson 2 Forest 3 Meridian 4 Brookhaven 5 Waltham 6 McComb 7 Hattiesburg 8 Clarksdale			
To convert feet to meters multiply by 0.3048							

FOR SALE BY U.S. GEOLOGICAL SURVEY
RESTON, VIRGINIA 20192

Topographic Map Symbols

Primary highway, hard surface	
Secondary highway, hard surface	
Light duty road, principal street, hard or improved surface	
Other road or street, trail	
Radio tower, intermediate, U.S. State	
Railroad, standard gage, narrow gage	
Bridge, overpass, underpass	
Tunnel: road, railroad	
Built up area, locality, elevation	
Airport, landing field, landing strip	
National boundary	
State boundary	
County boundary	
National or State reservation boundary	
Land grant boundary	
U.S. public lands survey: range, township, section	
Range, township, section line: protected	
Power transmission line, pipeline	
Dam, dam with lock	
Cemetery, building	
Windmill, water well, spring	
Mine shaft, adit or cave, mine, quarry, gravel pit	
Campground, picnic area, U.S. location monument	
Hummock, cliff dwelling	
Disrupted surface, strip mine, lava, sand	
Contours: index, intermediate, supplementary	
Bathymetric contours: index, intermediate	
Stream, lake, perennial, intermittent	
Reefs, large and small, lake, large and small	
Area to be submerged, marsh, swamp	
Land subject to controlled inundation, woodland	
Soak, mangrove	
Cropland, vineyard	

A pamphlet describing topographic maps is available on request

LAUREL, MISSISSIPPI
31089-EI-PL-100

1984

RETURN TO:
USGS AND HISTORICAL MAP ARCHIVES

INTERIOR-GEOLOGICAL SURVEY, RESTON, VIRGINIA, 1984