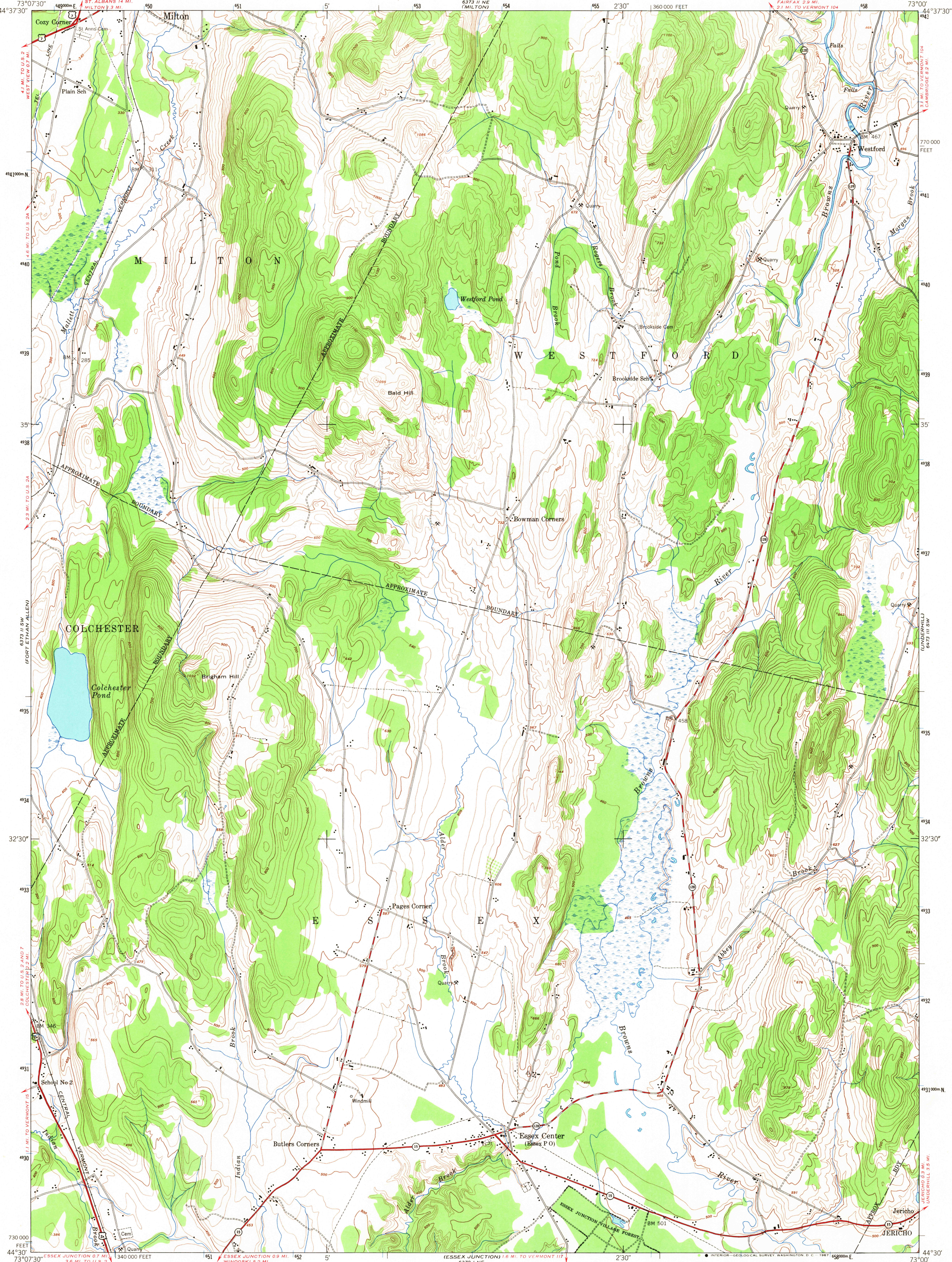


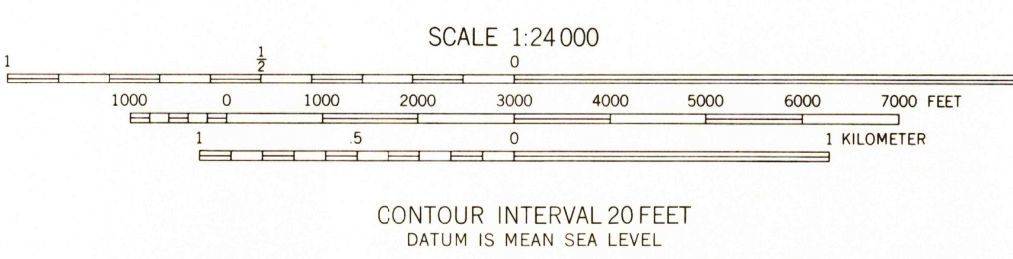
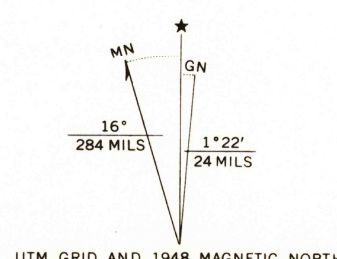
UNITED STATES
DEPARTMENT OF THE INTERIOR
GEOLOGICAL SURVEY

UNITED STATES
DEPARTMENT OF THE ARMY
CORPS OF ENGINEERS

ESSEX CENTER QUADRANGLE
VERMONT-CHITTENDEN CO.
7.5 MINUTE SERIES (TOPOGRAPHIC)
SE 1/4 MILTON 15' QUADRANGLE



Mapped by the Army Map Service
Published for civil use by the Geological Survey
Control by USGS, USC&GS, and USCE
Topography from aerial photographs by multiplex methods
Aerial photographs taken 1947. Field check 1948
Polyconic projection. 1927 North American datum
10,000-foot grid based on Vermont coordinate system
No distinction is made between barns, dwellings,
commercial and industrial buildings
Unchecked elevations are shown in brown
1000-meter Universal Transverse Mercator grid ticks,
zone 18, shown in blue



THIS MAP COMPLIES WITH NATIONAL MAP ACCURACY STANDARDS
FOR SALE BY U.S. GEOLOGICAL SURVEY, WASHINGTON, D.C. 20242
A FOLDER DESCRIBING TOPOGRAPHIC MAPS AND SYMBOLS IS AVAILABLE ON REQUEST

USGS
Historical File
Topographic Division



ROAD CLASSIFICATION
Heavy-duty 4 LANE 6 LANE Light-duty
Medium-duty 4 LANE 6 LANE Unimproved dirt
U. S. Route State Route

ESSEX CENTER, VT.
SE 1/4 MILTON 15' QUADRANGLE
N 4430-W 7300/7.5

1948

AMS 6373 II SE-SERIES V813

U.S.G.S.
FIND COPY
TOPOGRAPHIC DIVISION

JUL 21 1967

1500