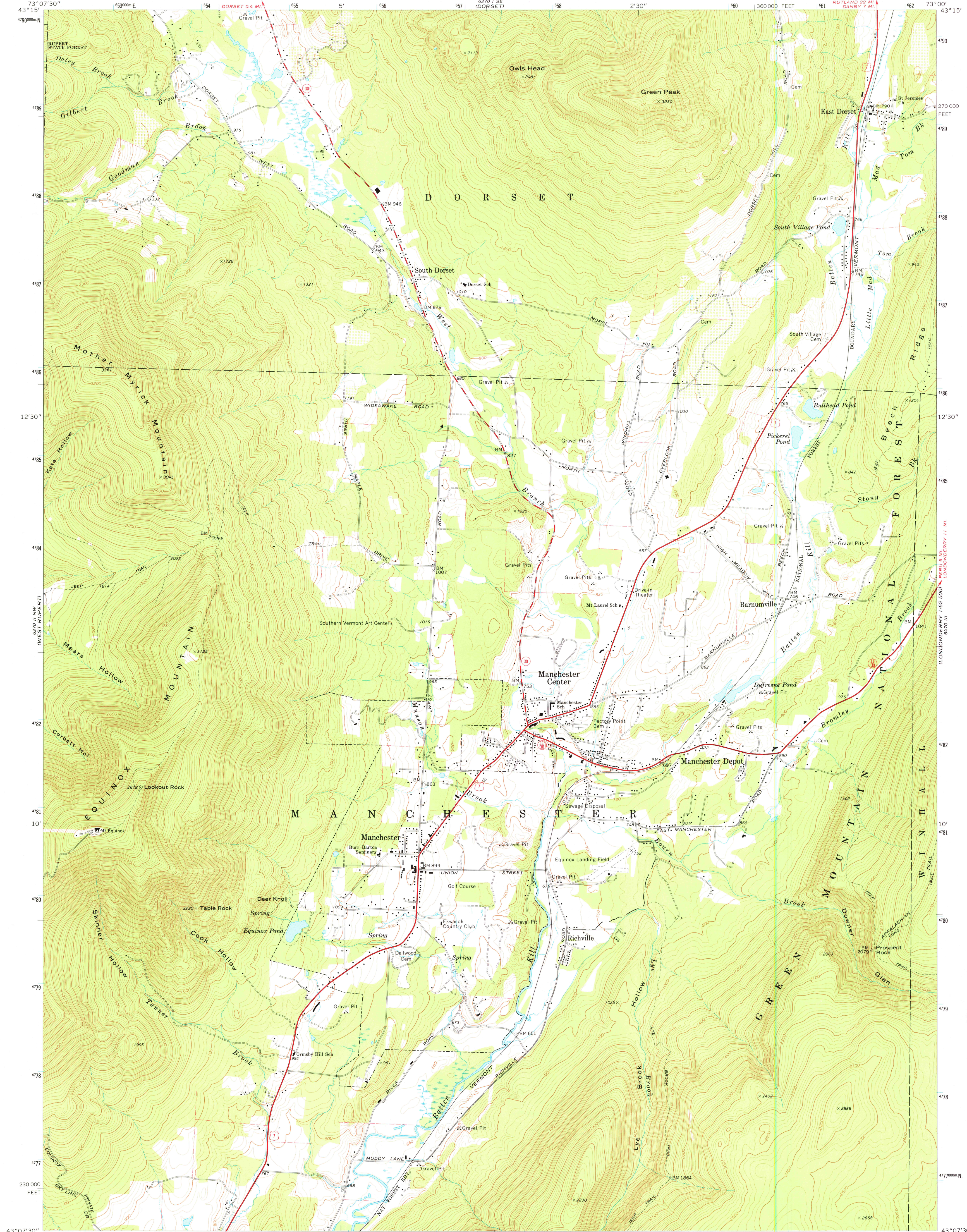


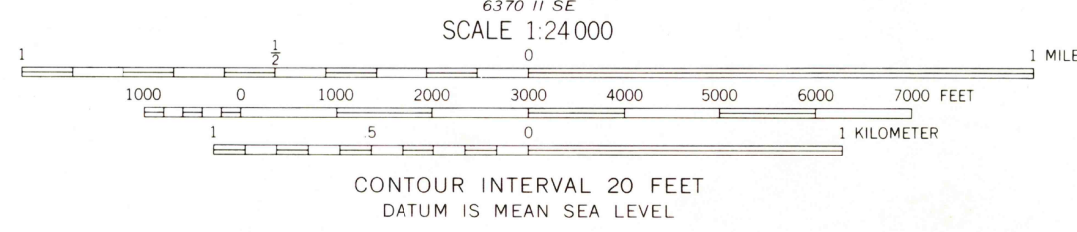
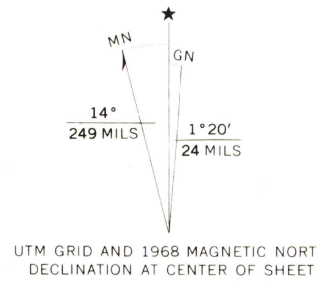
UNITED STATES  
DEPARTMENT OF THE INTERIOR  
GEOLOGICAL SURVEY

MANCHESTER QUADRANGLE  
VERMONT-BENNINGTON CO.  
7.5 MINUTE SERIES (TOPOGRAPHIC)  
NE/4 EQUINOX 15' QUADRANGLE



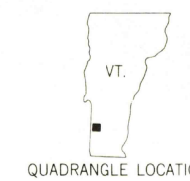
Maped, edited, and published by the Geological Survey  
Control by USGS and USC&GS

Topography by photogrammetric methods from aerial  
photographs taken 1965. Field checked 1968  
Polyconic projection. 1927 North American datum  
10,000-foot grid based on Vermont coordinate system  
1000-meter Universal Transverse Mercator grid ticks, zone 18,  
shown in blue  
Fine red dashed lines indicate selected fence and field lines where  
generally visible on aerial photographs. This information is unchecked



THIS MAP COMPLIES WITH NATIONAL MAP ACCURACY STANDARDS  
FOR SALE BY U. S. GEOLOGICAL SURVEY, WASHINGTON, D. C. 20242  
A FOLDER DESCRIBING TOPOGRAPHIC MAPS AND SYMBOLS IS AVAILABLE ON REQUEST

ROAD CLASSIFICATION	
Primary highway, hard surface	Light duty road, hard or improved surface
Secondary highway, hard surface	Unimproved road
Interstate Route	U. S. Route
	State Route



MANCHESTER, VT.  
NE/4 EQUINOX 15' QUADRANGLE  
N4307.5—W7300/7.5

USGS  
Historical File  
Topographic Division

1968  
AMS 6370 II NE—SERIES V813

RETURN TO:  
USGS NHD HISTORICAL MAP ARCHIVES

APR 12 1977

4200