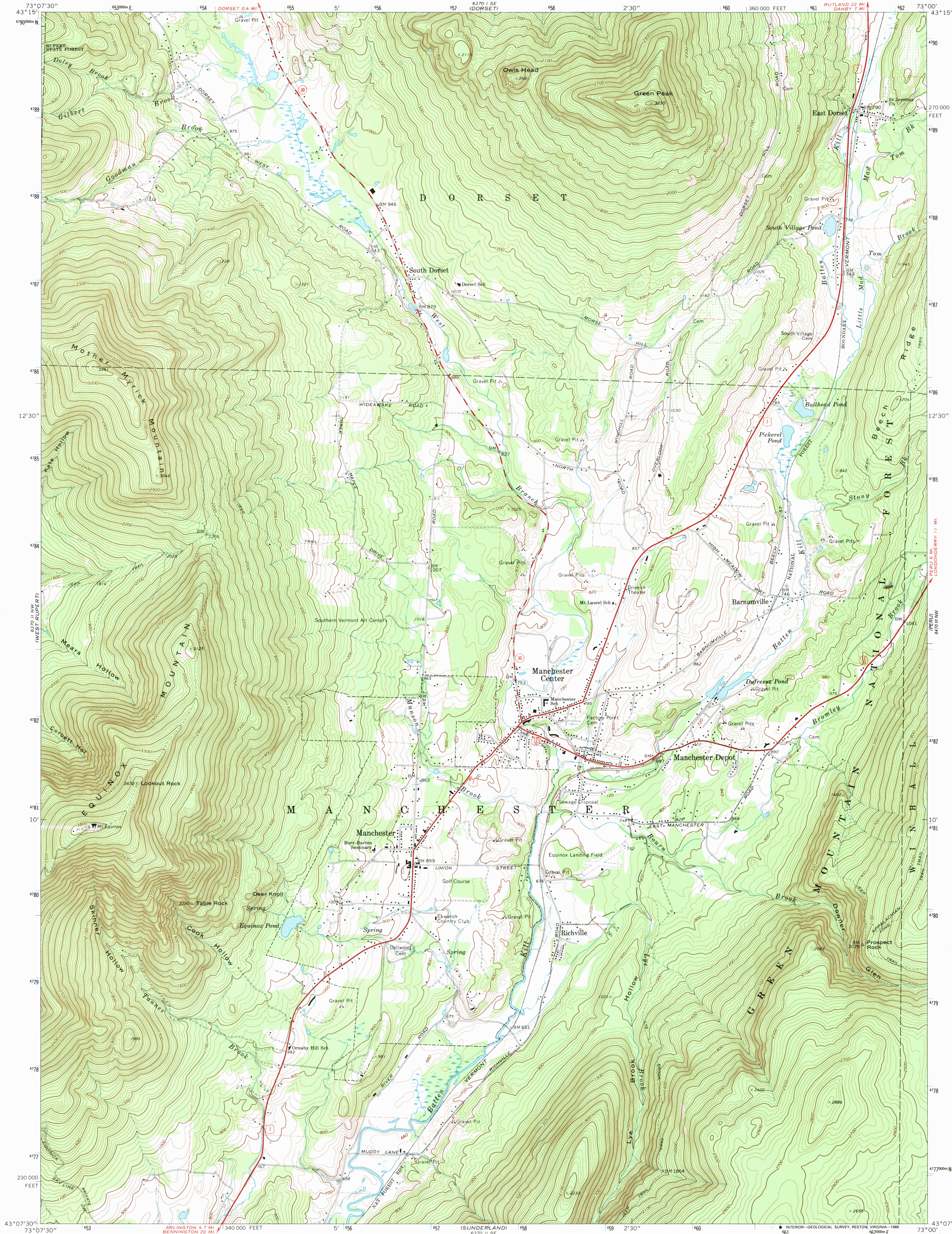


UNITED STATES
DEPARTMENT OF THE INTERIOR
GEOLOGICAL SURVEY

MANCHESTER QUADRANGLE
VERMONT-BENNINGTON CO.
7.5 MINUTE SERIES (TOPOGRAPHIC)

87018 SW
(DANBY)

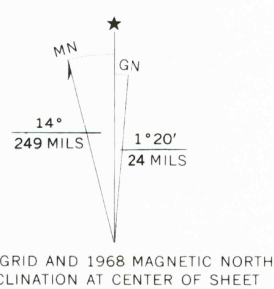


Mapped, edited, and published by the Geological Survey
Control by USGS and USC&GS

Topography by photogrammetric methods from aerial
photographs taken 1965. Field checked 1968
Polyconic projection. 1927 North American datum
10,000-foot grid based on Vermont coordinate system
1000-meter Universal Transverse Mercator grid ticks, zone 18,
shown in blue

Fine red dashed lines indicate selected fence and field lines where
generally visible on aerial photographs. This information is unchecked

To place on the predicted North American Datum 1983
move the projection lines 4 meters south and
36 meters west as shown by dashed corner ticks



THIS MAP COMPLIES WITH NATIONAL MAP ACCURACY STANDARDS
FOR SALE BY U.S. GEOLOGICAL SURVEY
DENVER, COLORADO 80225, OR RESTON, VIRGINIA 22092
A FOLDER DESCRIBING TOPOGRAPHIC MAPS AND SYMBOLS IS AVAILABLE ON REQUEST

ROAD CLASSIFICATION
Primary highway, hard surface ————
Secondary highway, hard surface ————
Unimproved road ————
Interstate Route ————
U.S. Route ————
State Route ————

MANCHESTER, VT.
NE/4 EQUINOX 15' QUADRANGLE
43073-B1-TF-024

1968

DMA 6370 11 NE-SERIES V813

USGS MND HISTORICAL MAP
AUG 02 1989
REC'D FILE COPY

02 1989
REC'D FILE COPY