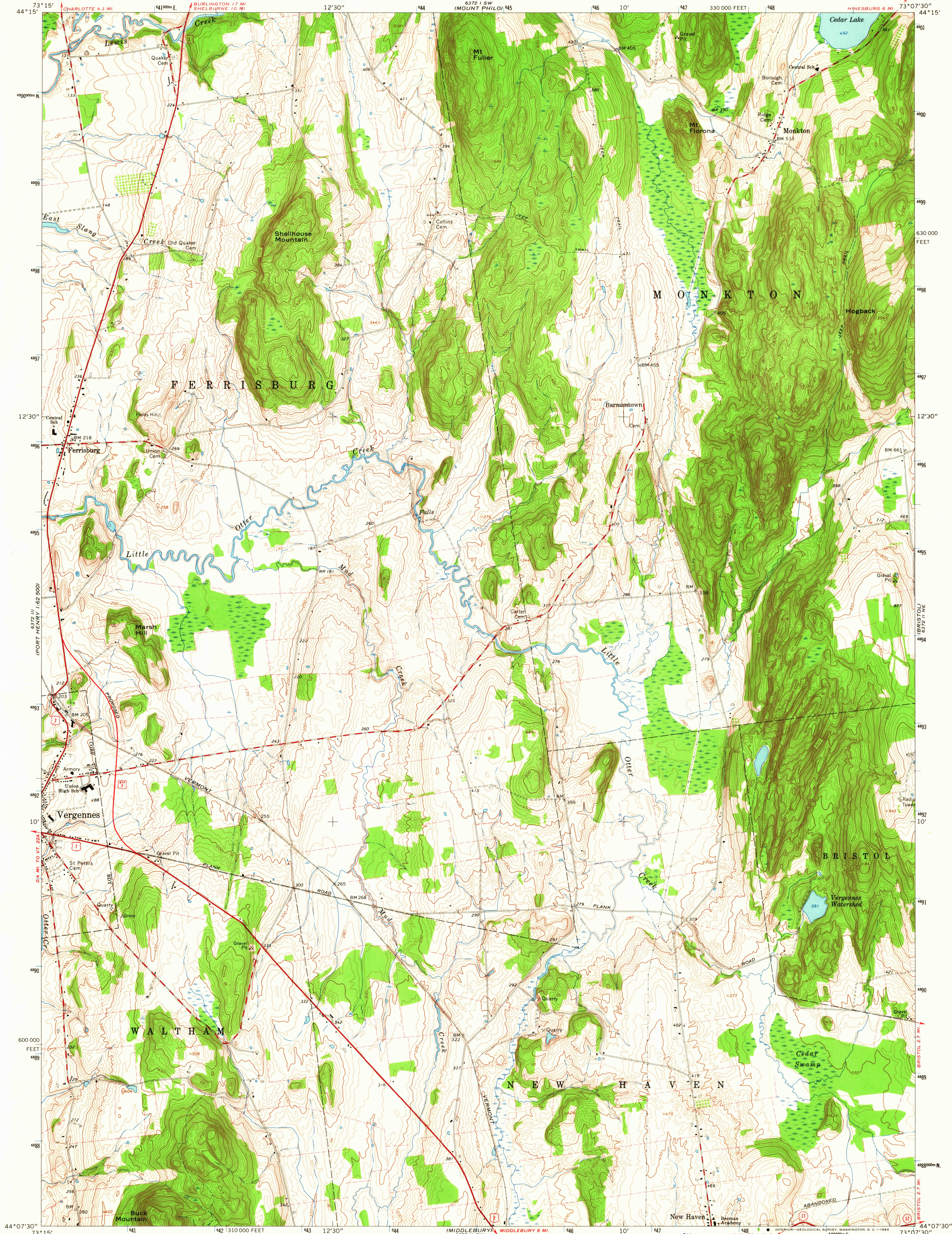
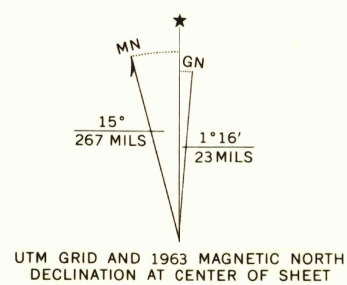


UNITED STATES
DEPARTMENT OF THE INTERIOR
GEOLOGICAL SURVEY

MONKTON QUADRANGLE
VERMONT—ADDISON CO.
7.5 MINUTE SERIES (TOPOGRAPHIC)
NW/4 MIDDLEBURY 15' QUADRANGLE



Mapped, edited, and published by the Geological Survey
Control by USGS and USC&GS
Topography by photogrammetric methods from aerial
photographs taken 1961. Field checked 1963
Polyconic projection. 1927 North American datum
10,000-foot grid based on Vermont coordinate system
1000-meter Universal Transverse Mercator grid ticks,
zone 18, shown in blue
Fine red dashed lines indicate selected fence and field lines where
generally visible on aerial photographs.
This information is unchecked



THIS MAP COMPLIES WITH NATIONAL MAP ACCURACY STANDARDS
FOR SALE BY U. S. GEOLOGICAL SURVEY, WASHINGTON 25, D. C.
A FOLDER DESCRIBING TOPOGRAPHIC MAPS AND SYMBOLS IS AVAILABLE ON REQUEST

USGS
Historical File
Topographic Division

ROAD CLASSIFICATION
Heavy-duty ——— Light-duty ———
Medium-duty ——— Unimproved dirt ———
U.S. Route ——— State Route ———

MONKTON, VT.
NW/4 MIDDLEBURY 15' QUADRANGLE
N4407.5—W7307.5/7.5

U.S.G.S.
FILE COPY
TOPOGRAPHIC DIVISION

1963

AMS 6372 II NW—SERIES V813

OCT 14 1964

3620