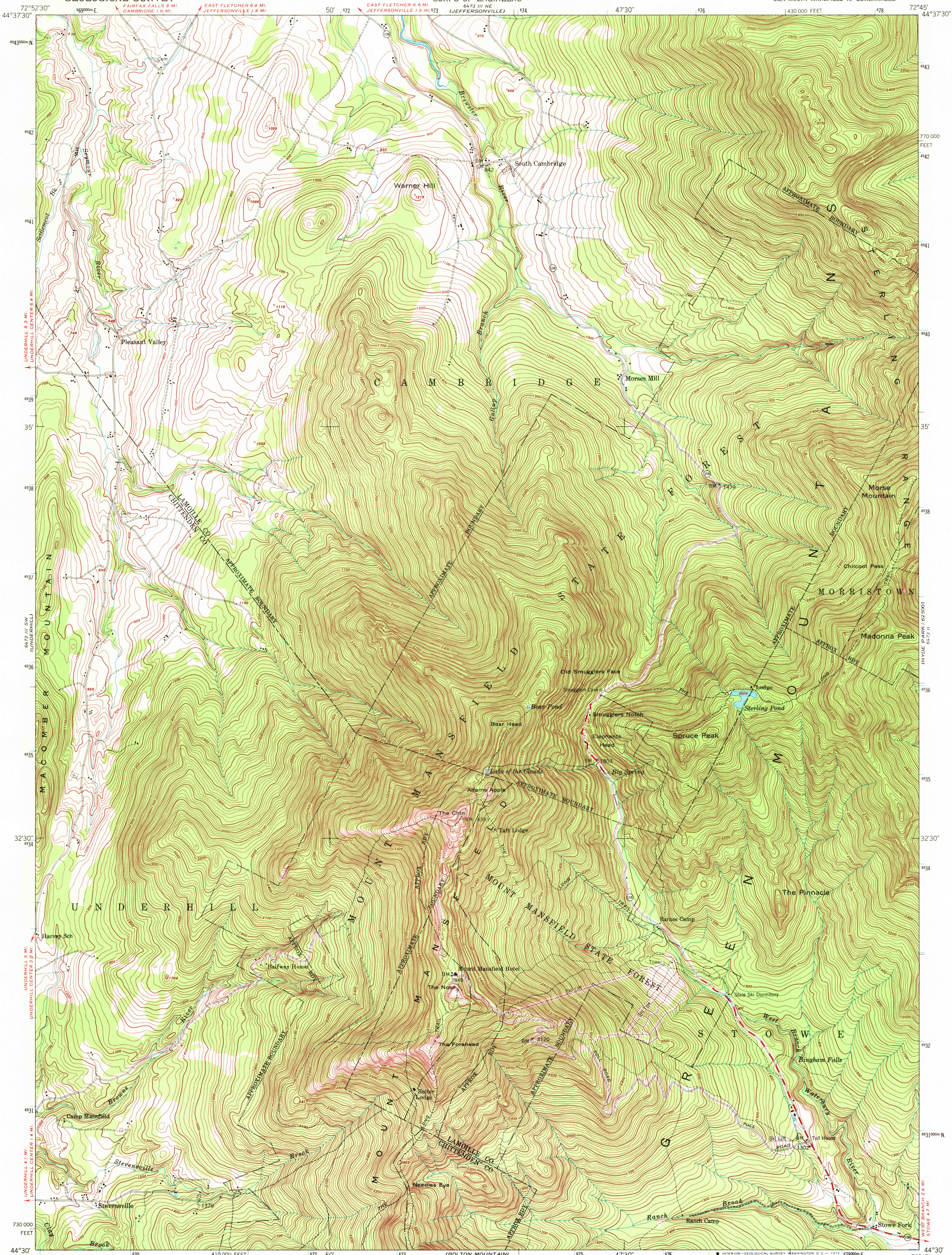


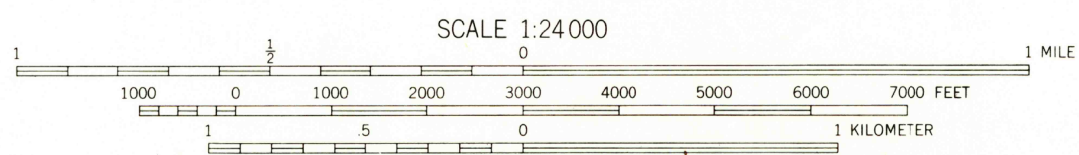
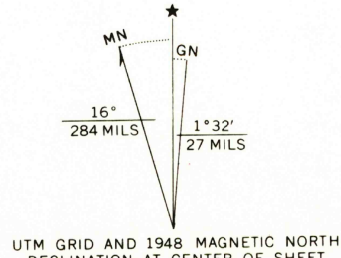
UNITED STATES  
DEPARTMENT OF THE INTERIOR  
GEOLOGICAL SURVEY

UNITED STATES  
DEPARTMENT OF THE ARMY  
CORPS OF ENGINEERS

MOUNT MANSFIELD QUADRANGLE  
VERMONT  
7.5 MINUTE SERIES (TOPOGRAPHIC)  
SE/4 MOUNT MANSFIELD 15' QUADRANGLE



Mapped by the Army Map Service  
Published for civil use by the Geological Survey  
Control by USGS, USC&GS, and USCE  
Topography from aerial photographs by multiplex methods  
Aerial photographs taken 1947. Field check 1948  
Polyconic projection. 1927 North American datum  
10,000-foot grid based on Vermont coordinate system  
No distinction is made between dwellings, barns,  
commercial and industrial buildings  
Unchecked elevations are shown in brown  
The Long Trail shown in approximate location  
1000-meter Universal Transverse Mercator grid ticks,  
zone 18, shown in blue.



CONTOUR INTERVAL 20 FEET  
DATUM IS MEAN SEA LEVEL

THIS MAP COMPLIES WITH NATIONAL MAP ACCURACY STANDARDS  
FOR SALE BY U. S. GEOLOGICAL SURVEY, WASHINGTON, D. C. 20242  
A FOLDER DESCRIBING TOPOGRAPHIC MAPS AND SYMBOLS IS AVAILABLE ON REQUEST



ROAD CLASSIFICATION  
Heavy-duty 4 LANE 16 LANE Light-duty  
Medium-duty 4 LANE 16 LANE Unimproved dirt  
U. S. Route State Route

MOUNT MANSFIELD, VT.  
SE/4 MOUNT MANSFIELD 15' QUADRANGLE  
N4430-W7245/7.5

1948

AMS 6473 III SE-SERIES V813

USGS  
Historical File  
Topographic Division

AUG 2 1 1972

3810