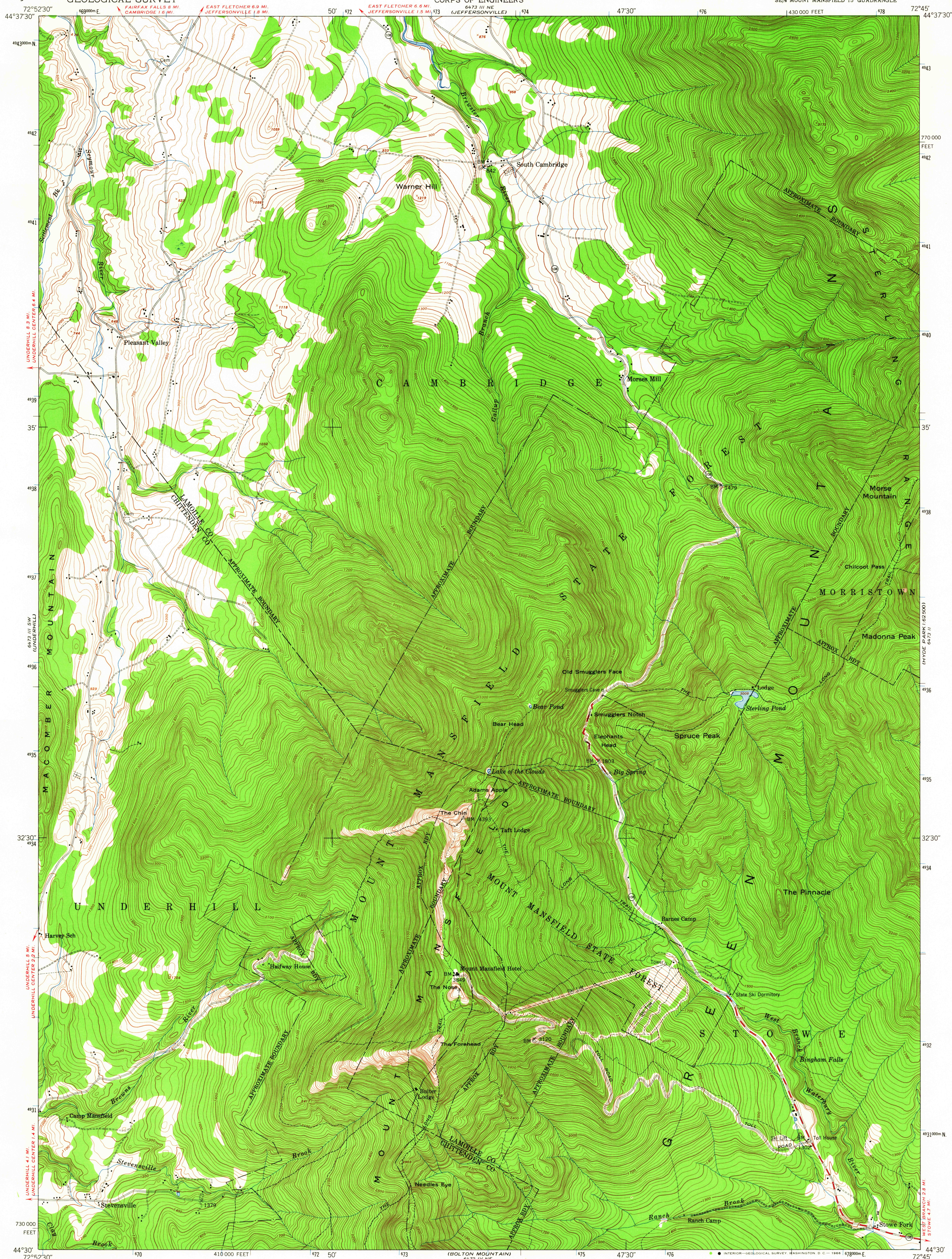


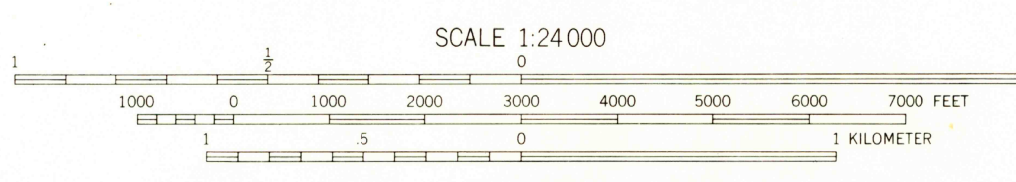
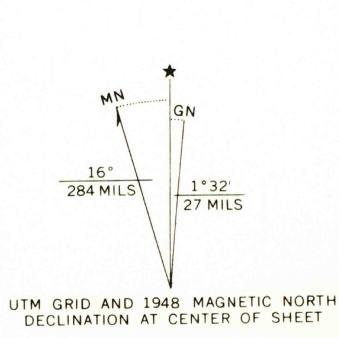
UNITED STATES
DEPARTMENT OF THE INTERIOR
GEOLOGICAL SURVEY

UNITED STATES
DEPARTMENT OF THE ARMY
CORPS OF ENGINEERS

MOUNT MANSFIELD QUADRANGLE
VERMONT
7.5 MINUTE SERIES (TOPOGRAPHIC)
SE/4 MOUNT MANSFIELD 15' QUADRANGLE



Maped by the Army Map Service
Published for civil use by the Geological Survey
Control by USGS, USC&GS, and USCE
Topography from aerial photographs by multiplex methods
Aerial photographs taken 1947. Field check 1948
Polyconic projection. 1927 North American datum
10,000-foot grid based on Vermont coordinate system
No distinction is made between dwellings, barns,
commercial and industrial buildings
Unchecked elevations are shown in brown
The Long Trail shown in approximate location
1000-meter Universal Transverse Mercator grid ticks,
zone 18, shown in blue



THIS MAP COMPLIES WITH NATIONAL MAP ACCURACY STANDARDS
FOR SALE BY U. S. GEOLOGICAL SURVEY, WASHINGTON, D. C. 20242
A FOLDER DESCRIBING TOPOGRAPHIC MAPS AND SYMBOLS IS AVAILABLE ON REQUEST

USGS
Historical File
Topographic Division



ROAD CLASSIFICATION
Heavy-duty 4 LANE 6 LANE Light-duty
Medium-duty 4 LANE 6 LANE Unimproved dirt
U. S. Route State Route

U.S.G.S.
MOUNT MANSFIELD, VT.
SE/4 MOUNT MANSFIELD 15' QUADRANGLE
N4430-W7245/7.5
1948
AMS 6473 III SE-SERIES V813

FILE COPY
TOPOGRAPHIC DIVISION

HISTORICAL

DEC 22 1965

1975