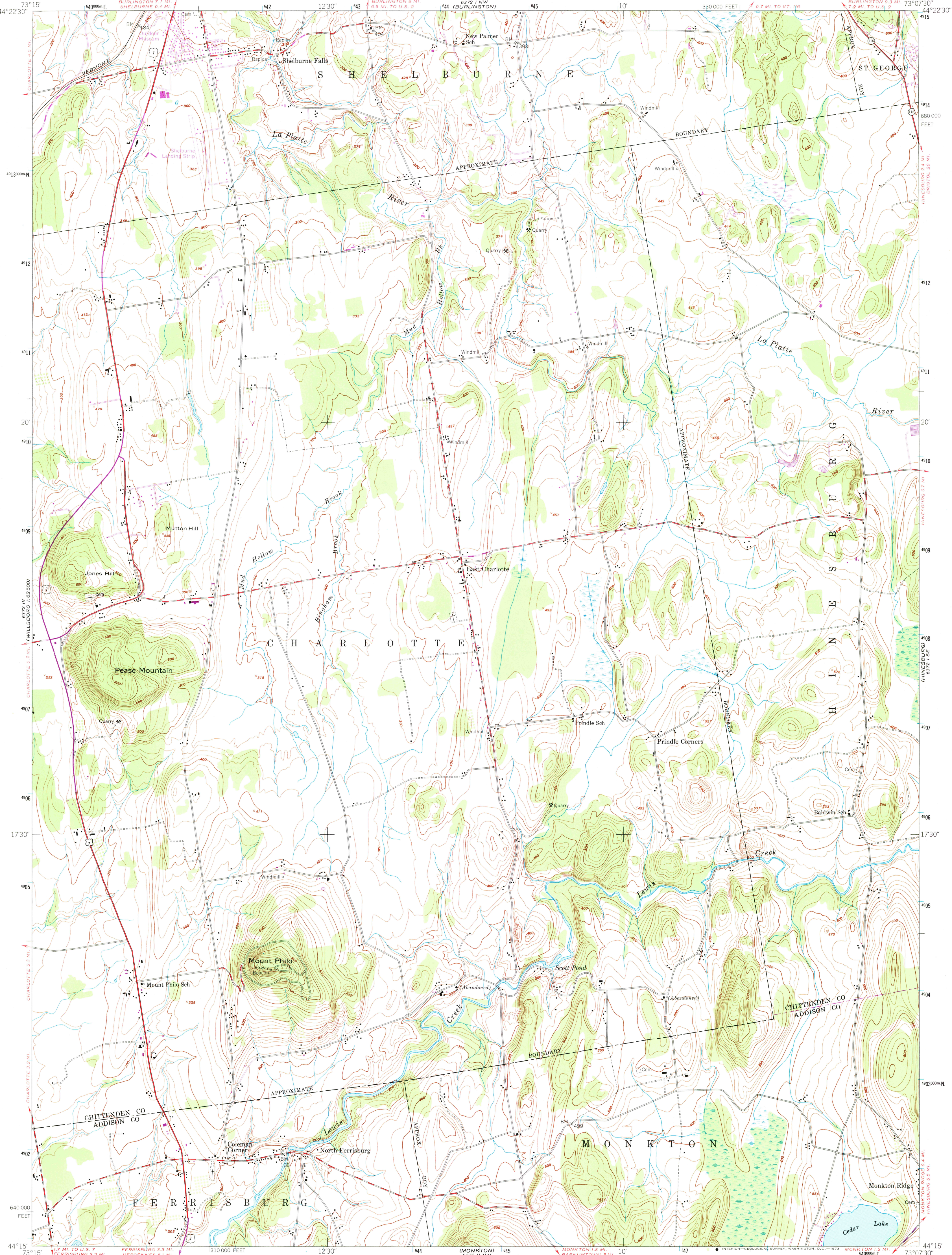


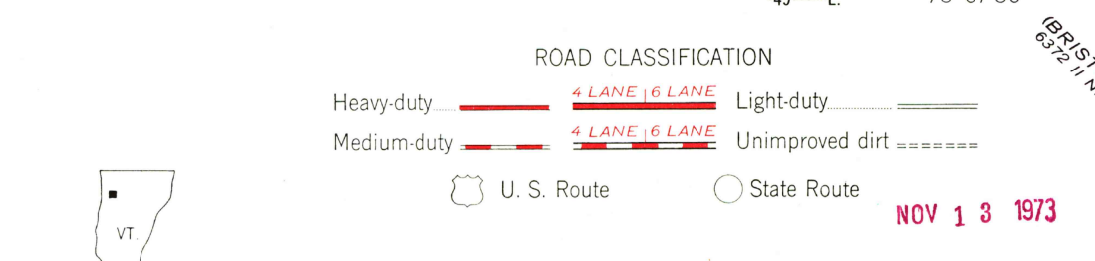
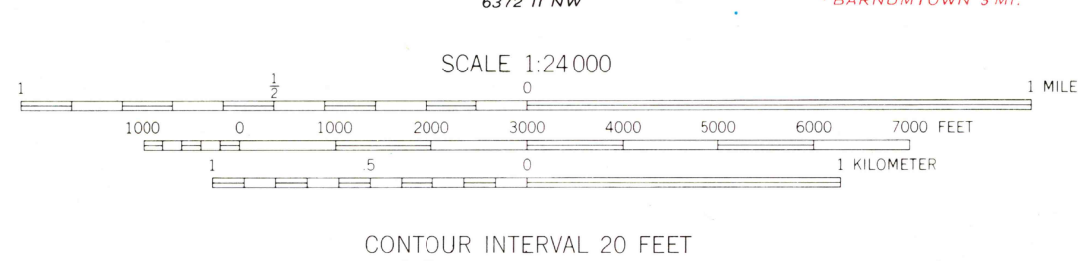
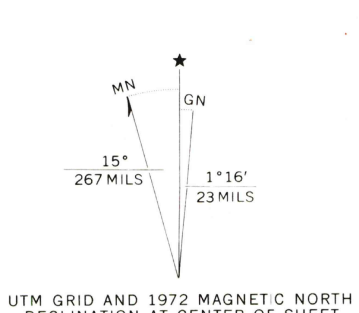
UNITED STATES
DEPARTMENT OF THE INTERIOR
GEOLOGICAL SURVEY

UNITED STATES
DEPARTMENT OF THE ARMY
CORPS OF ENGINEERS

MOUNT PHILO QUADRANGLE
VERMONT
7.5 MINUTE SERIES (TOPOGRAPHIC)
SW 1/4 BURLINGTON 15' QUADRANGLE



Map by the Army Map Service
Published for civil use by the Geological Survey
Control by USGS, USC&GS, and USCE
Topography from aerial photographs by multiplex methods
Aerial photographs taken 1947. Field check 1948
Polyconic projection. 1927 North American datum
10,000-foot grid based on Vermont coordinate system
No distinction is made between dwellings, barns,
commercial and industrial buildings
Unchecked elevations are shown in brown
1000-meter Universal Transverse Mercator grid ticks,
zone 18, shown in blue
Revisions shown in purple compiled by the Geological Survey from
aerial photographs taken 1972. This information not field checked



THIS MAP COMPLIES WITH NATIONAL MAP ACCURACY STANDARDS
FOR SALE BY U.S. GEOLOGICAL SURVEY, WASHINGTON, D.C. 20242
A FOLDER DESCRIBING TOPOGRAPHIC MAPS AND SYMBOLS IS AVAILABLE ON REQUEST

U.S.G.S.
CURRENT FILE
TOPOGRAPHIC DIVISION

MOUNT PHILO, VT.
SW 1/4 BURLINGTON 15' QUADRANGLE
N 4415 - W 7307 5/7.5
1948
AMS 6372 I SW - SERIES V813

USGS
Historical File
Topographic Division

RETURN TO:
USGS AND HISTORICAL MAP ARCHIVES