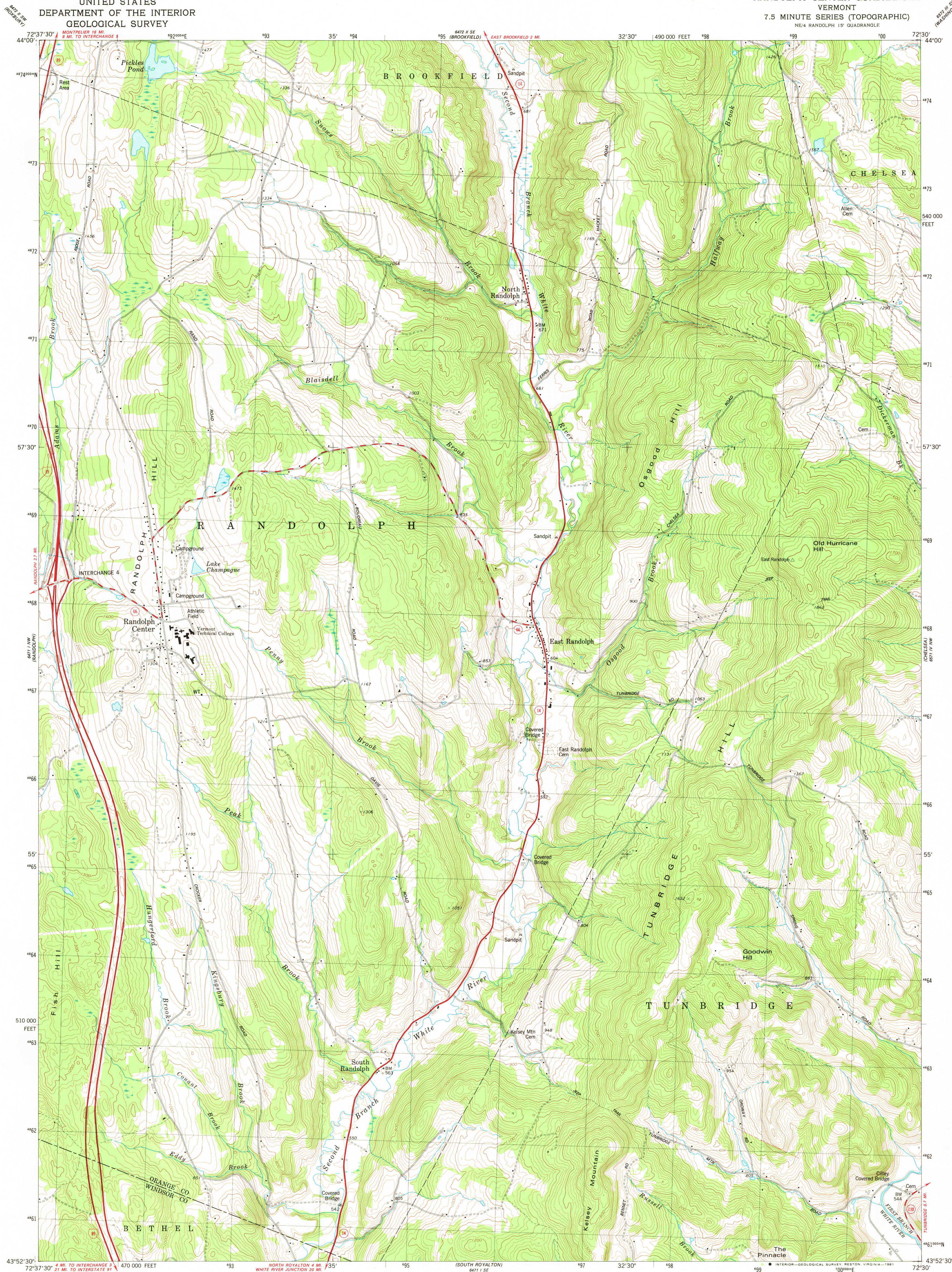
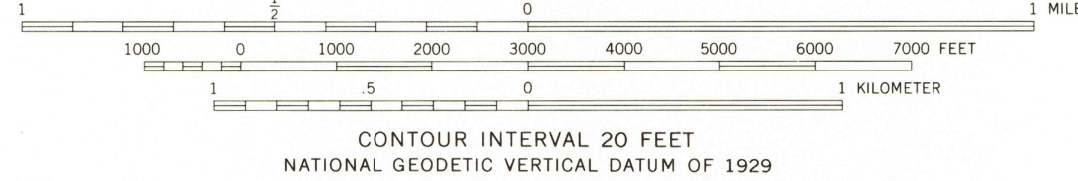
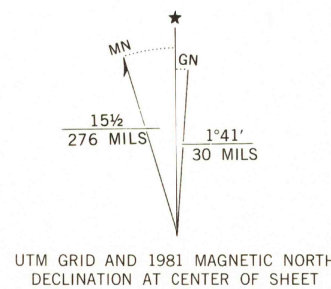


UNITED STATES  
DEPARTMENT OF THE INTERIOR  
GEOLOGICAL SURVEY

RANDOLPH CENTER QUADRANGLE  
VERMONT  
7.5 MINUTE SERIES (TOPOGRAPHIC)  
NE 1/4 RANDOLPH 15' QUADRANGLE



Mapped, edited, and published by the Geological Survey  
Control by USGS and NOS/NOAA  
Topography by photogrammetric methods from aerial photographs  
taken 1973. Field checked 1975. Map edited 1981  
Projection and 10,000-foot grid ticks: Vermont coordinate  
system (transverse Mercator)  
1000-meter Universal Transverse Mercator grid, zone 18  
1927 North American Datum  
To place on the predicted North American Datum 1983  
move the projection lines 3 meters south and  
36 meters west as shown by dashed corner ticks  
Fine red dashed lines indicate selected fence and field lines where  
generally visible on aerial photographs. This information is unchecked



ROAD CLASSIFICATION  
Primary highway, hard surface  
Secondary highway, hard surface  
Light-duty road, hard or improved surface  
Unimproved road  
Interstate Route  
U. S. Route  
State Route

RANDOLPH CENTER, VT.  
NE 1/4 RANDOLPH 15' QUADRANGLE  
N4352.5-W72307.5  
1981

DMA 6471 11 NE-SERIES V813

THIS MAP COMPLIES WITH NATIONAL MAP ACCURACY STANDARDS  
FOR SALE BY U. S. GEOLOGICAL SURVEY, RESTON, VIRGINIA 22092  
A FOLDER DESCRIBING TOPOGRAPHIC MAPS AND SYMBOLS IS AVAILABLE ON REQUEST

USGS  
Historical File  
National Mapping Div.

2050  
MAY 20 1981