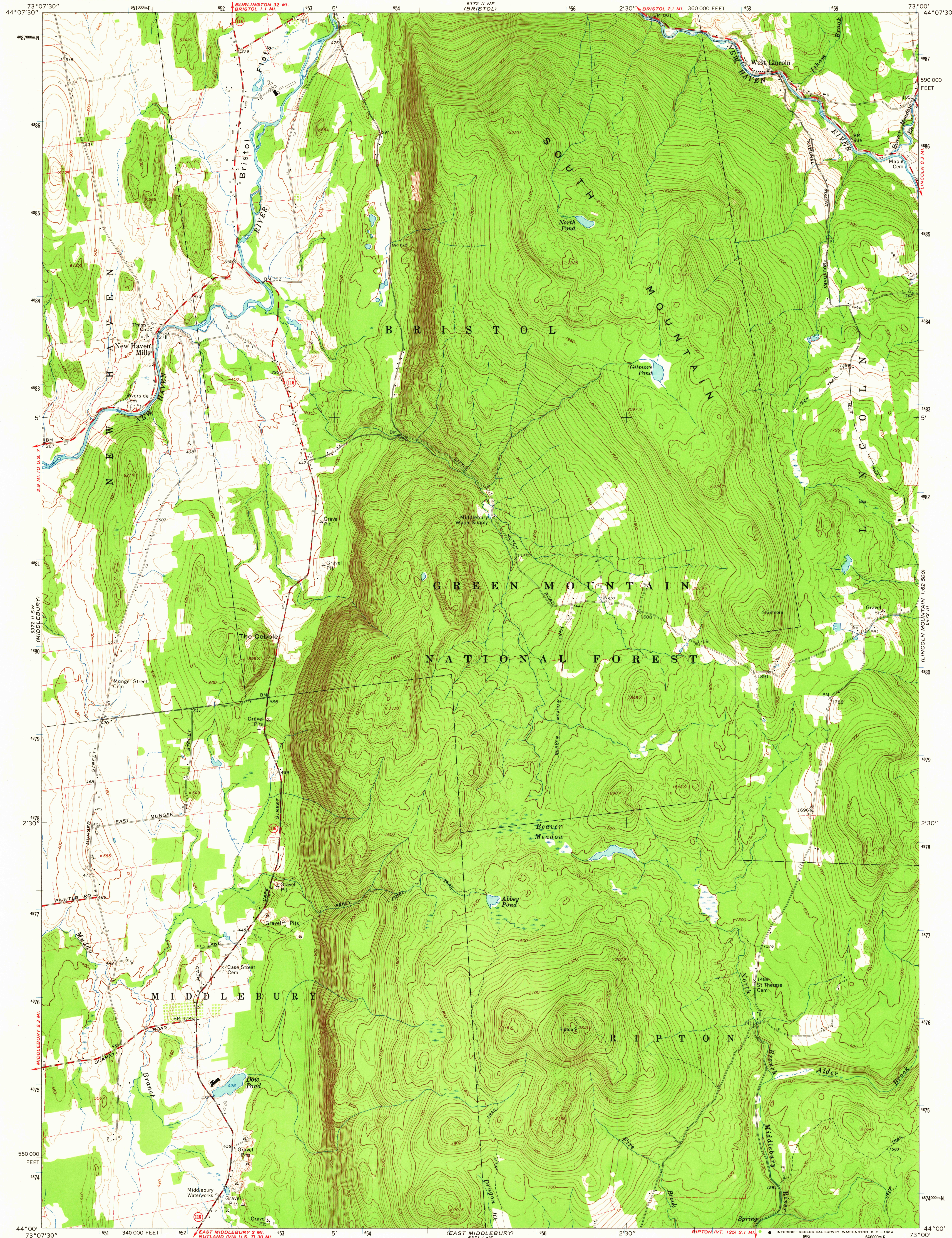


UNITED STATES
DEPARTMENT OF THE INTERIOR
GEOLOGICAL SURVEY

SOUTH MOUNTAIN QUADRANGLE
VERMONT—ADDISON CO.
7.5 MINUTE SERIES (TOPOGRAPHIC)
SE/4 MIDDLEBURY 15' QUADRANGLE



Mapped, edited, and published by the Geological Survey

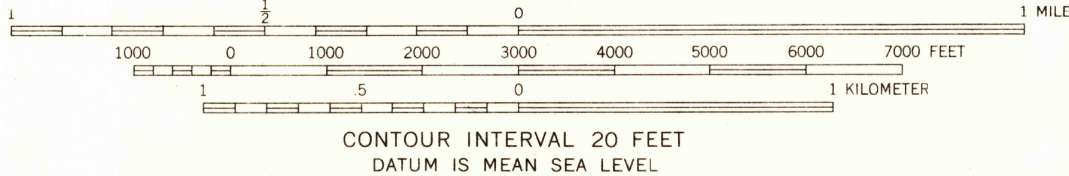
Control by USGS, USCGS, and USFS

Topography by photogrammetric methods from aerial
photographs taken 1961. Field checked 1963

Polyconic projection. 1927 North American datum
10,000-foot grid based on Vermont coordinate system
1000-meter Universal Transverse Mercator grid ticks,
zone 18, shown in blue

Fine red dashed lines indicate selected fence and field lines where
generally visible on aerial photographs. This information is unchecked

UTM GRID AND 1963 MAGNETIC NORTH
DECLINATION AT CENTER OF SHEET



THIS MAP COMPLIES WITH NATIONAL MAP ACCURACY STANDARDS
FOR SALE BY U. S. GEOLOGICAL SURVEY, WASHINGTON 25, D. C.
A FOLDER DESCRIBING TOPOGRAPHIC MAPS AND SYMBOLS IS AVAILABLE ON REQUEST

USGS
Historical File
Topographic Division



U.S.G.S.
FILE COPY
TOPOGRAPHIC DIVISION

ROAD CLASSIFICATION
Medium-duty ——— Light-duty ———
Unimproved dirt ———
State Route

SOUTH MOUNTAIN, VT.
SE/4 MIDDLEBURY 15' QUADRANGLE
N4400—W7300/7.5

1963
AMS 6372 II SE—SERIES V813

OCT 14 1964

3210

HISTORICAL