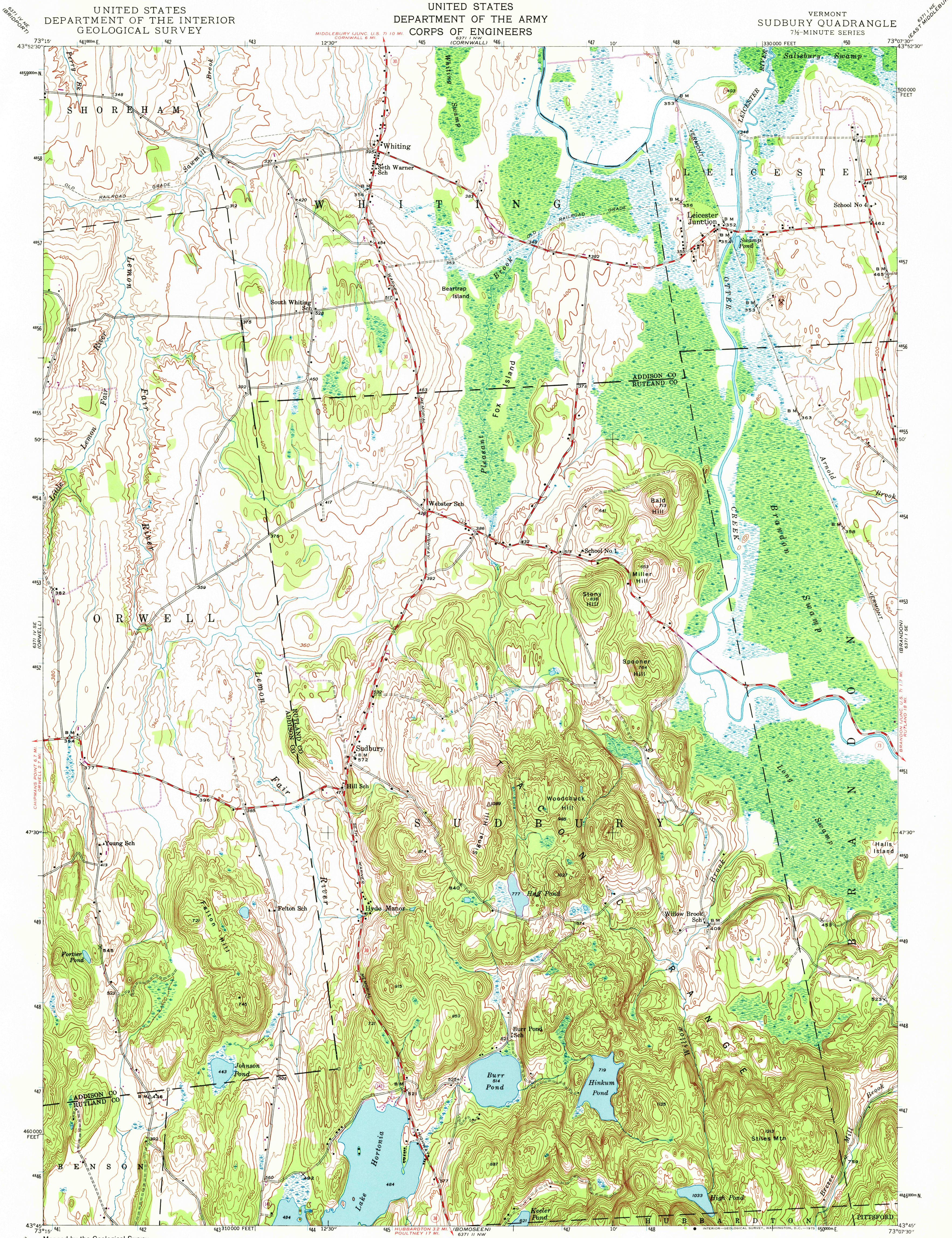


UNITED STATES
DEPARTMENT OF THE INTERIOR
GEOLOGICAL SURVEY

UNITED STATES
DEPARTMENT OF THE ARMY
CORPS OF ENGINEERS

VERMONT
SUDBURY QUADRANGLE
7 1/2-MINUTE SERIES



Mapped by the Geological Survey
1946
ROAD CLASSIFICATION

Medium-duty ——— Light-duty ———
Unimproved dirt - - - - -
State Route

Revisions shown in purple compiled from aerial photographs
taken 1972. This information not field checked

UTM GRID AND 1972 MAGNETIC NORTH
DECLINATION AT CENTER OF SHEET

SCALE 1:24,000
1 000 0 1000 2000 3000 4000 5000 6000 7000 FEET
1 5 0 5 10 KILOMETER
CONTOUR INTERVAL 20 FEET
DATUM IS MEAN SEA LEVEL

Polyconic projection. 1927 North American datum
10,000-foot grid based on Vermont
rectangular coordinate system
1000-meter Universal Transverse Mercator grid ticks,
zone 18, shown in blue

SUDBURY, VT.
N 4345-W 7307.5/7.5
1946
PHOTOREVISED 1972
AMS 6371 I SW-SERIES V813

THIS MAP COMPLIES WITH NATIONAL MAP ACCURACY STANDARDS
FOR SALE BY U. S. GEOLOGICAL SURVEY, WASHINGTON, D. C. 20242
A FOLDER DESCRIBING TOPOGRAPHIC MAPS AND SYMBOLS IS AVAILABLE ON REQUEST