

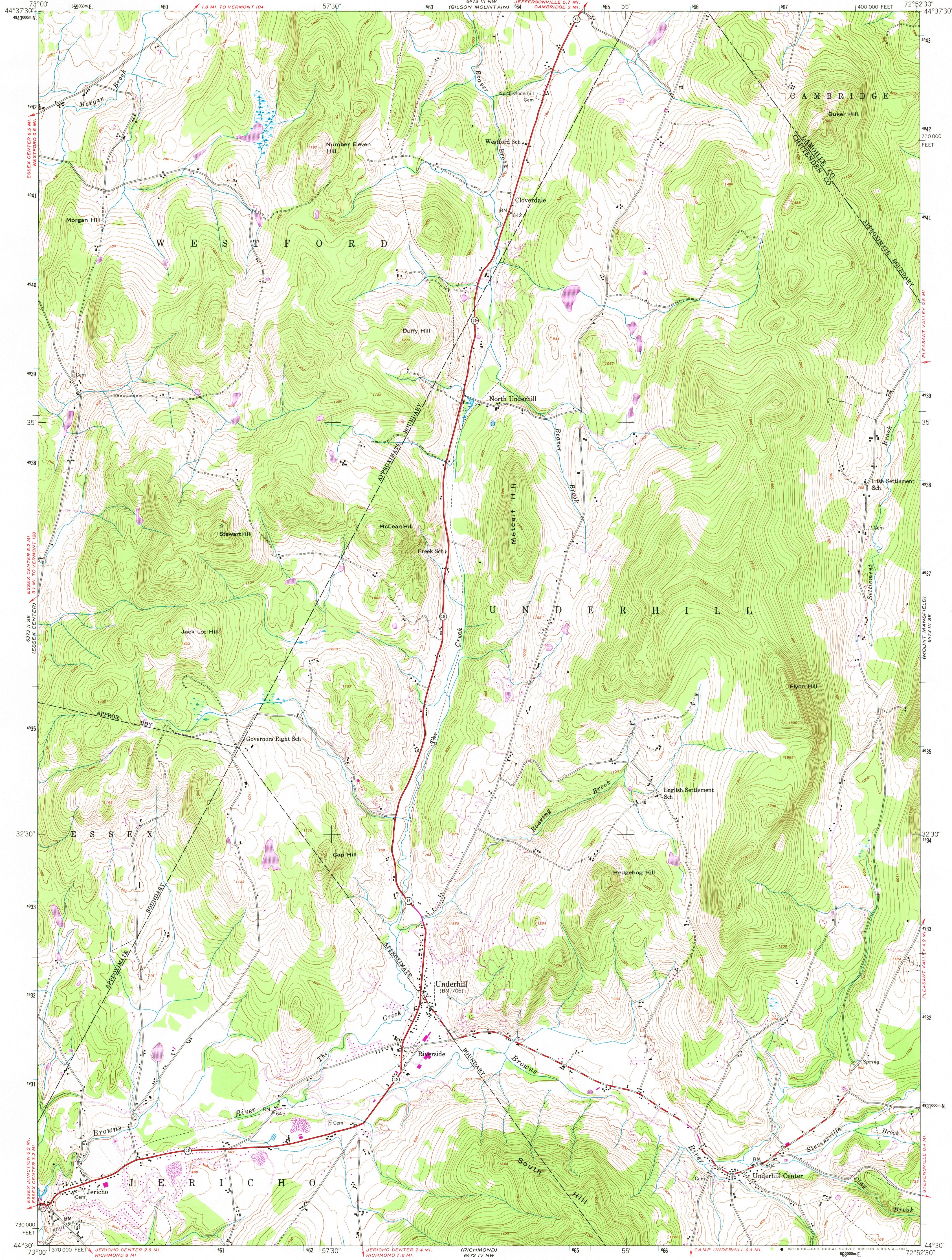
6373 IINE
MILITON

UNITED STATES
DEPARTMENT OF THE INTERIOR
GEOLOGICAL SURVEY

UNITED STATES
DEPARTMENT OF THE ARMY
CORPS OF ENGINEERS

UNDERHILL QUADRANGLE
VERMONT
7.5 MINUTE SERIES (TOPOGRAPHIC)
SW/4 MOUNT MANSFIELD 15' QUADRANGLE

6473 IINE
JEFFERSONVILLE



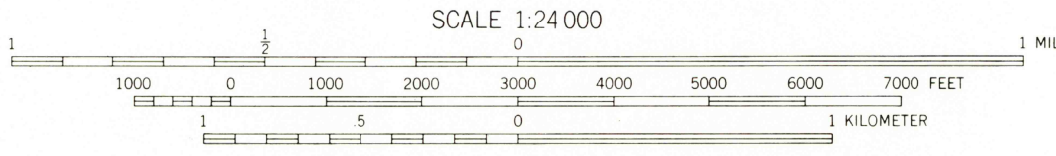
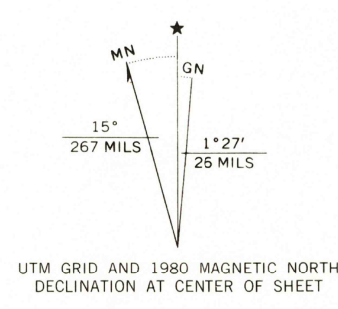
Map by the Army Map Service
Published for civil use by the Geological Survey

Control by USGS, NOS/NOAA, and USCE
Topography by photogrammetric methods from aerial
photographs taken 1947. Field checked 1948

Polyconic projection. 10,000-foot grid based on Vermont
coordinate system. 1000-meter Universal Transverse Mercator
grid ticks, zone 18, shown in blue. 1927 North American Datum
To place on the predicted North American Datum 1983
move the projection lines 2 meters south and
35 meters west as shown by dashed corner ticks

No distinction is made between dwellings, barns,
commercial and industrial buildings

Revisions shown in purple and woodland compiled by the Geological
Survey from aerial photographs taken 1978 and other source data
This information not field checked. Map edited 1980



CONTOUR INTERVAL 20 FEET
NATIONAL GEODETIC VERTICAL DATUM OF 1929

THIS MAP COMPLIES WITH NATIONAL MAP ACCURACY STANDARDS
FOR SALE BY U.S. GEOLOGICAL SURVEY, RESTON, VIRGINIA 22092
A FOLDER DESCRIBING TOPOGRAPHIC MAPS AND SYMBOLS IS AVAILABLE ON REQUEST



QUADRANGLE LOCATION

ROAD CLASSIFICATION	
Heavy-duty	4 LANE 6 LANE
Medium-duty	4 LANE 6 LANE
Light-duty	Unimproved dirt
U.S. Route	State Route

UNDERHILL, VT.
SW/4 MOUNT MANSFIELD 15' QUADRANGLE
N4430-W7252.5/7.5

1948
PHOTOREVISED 1980
DMA 6473 III SW-SERIES V813

USGS
HISTORICAL FILE
NATIONAL MAPPING DIVISION

JUN 29 1981

2550